

Samurai helmet decoration

A kabuto kazari is a decoration featuring a Samurai helmet (kabuto) in the middle, with a bow and sword on either side. It is displayed in homes in Japan on "Boys' Day" (May 5th), and is said to ward off evil and bring good health for the boy children in the house. Boys' Day is one of Japan's annual festivals, and its origins lie in Chinese evil spirit eradication ceremonies. During Japan's long history as a nation run by Samurai, helmets and armor were regarded as extremely important items for keeping a man safe in battle, and today they are still viewed as symbols of protection. The decorations for Boys' Day include outdoor decorations ("koinobori" carp streamers, flags with warrior paintings) and indoor decorations (armor, kabuto kazari and dolls of children dressed as Samurais). The koinobori represent success in life, while the indoor decorations are for the child's health, so it is thought to be a good idea to display both types of decoration to receive their different blessings.



★ Assembly Instructions

- 1) Carefully cut out the parts.
- 2) Fold along the dotted lines, making mountain or valley folds as indicated.
- 3) Follow the order indicated in the instructional diagrams, and attach the parts to assemble.
(Read the Explanation of Symbols for more information.)
- 4) Your paper craft model is finished!

★ Tools

Scissors, glue (We recommend craft glue.)

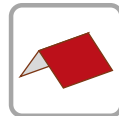
★ Caution

Keep glue away from small children.
Be careful not to cut your fingers when using scissors.
Fold the folding lines before gluing.

★ Explanation of Symbols



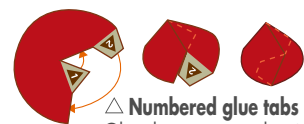
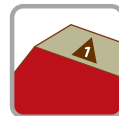
————— Cut line



- - - - - Mountain fold



- - - - - Valley fold



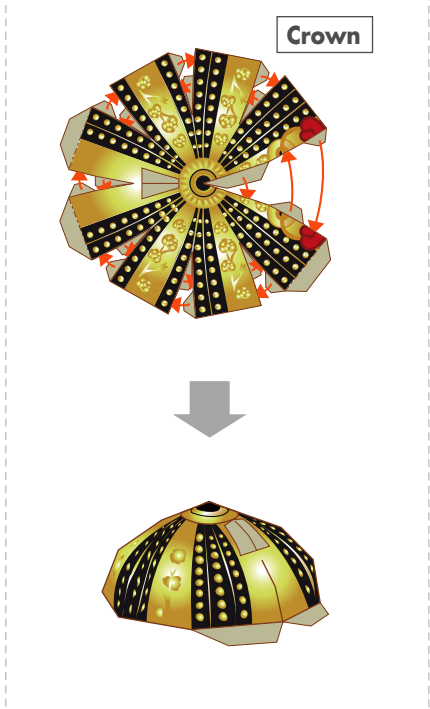
△ **Numbered glue tabs**
Glue the parts together in the order indicated by the numbers.



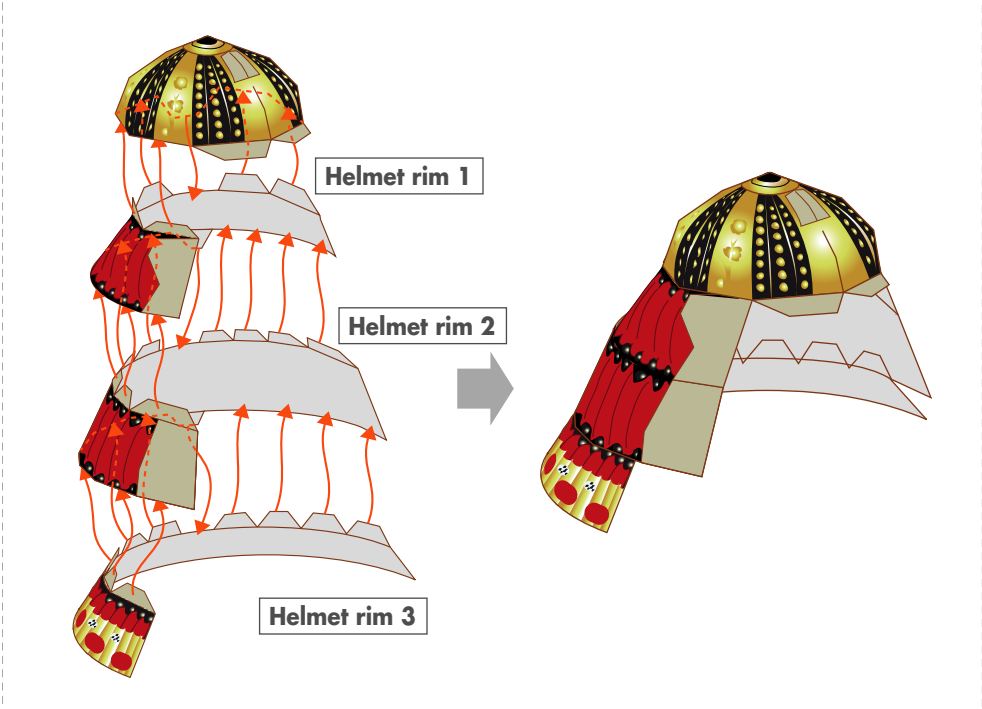
△ **Glue tabs with symbols and part names**
These tabs are to be glued onto the matching parts, which name is indicated on the tab.

★ Assemble the helmet (1)

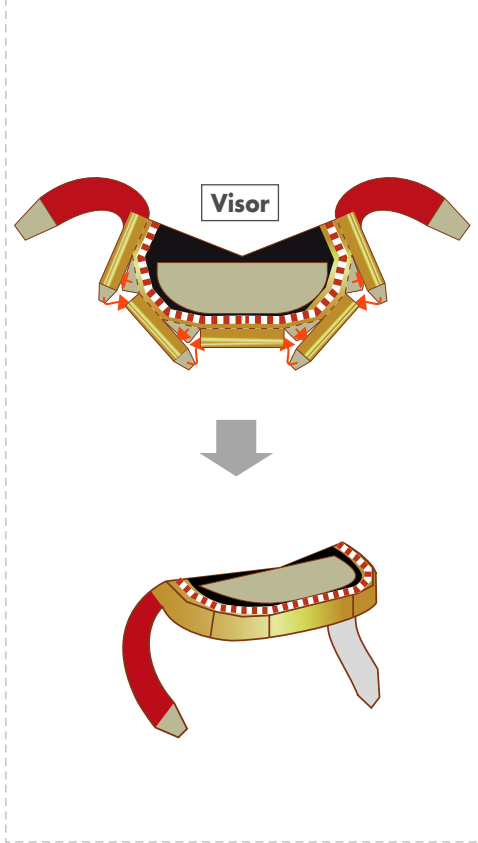
1 Assemble the crown



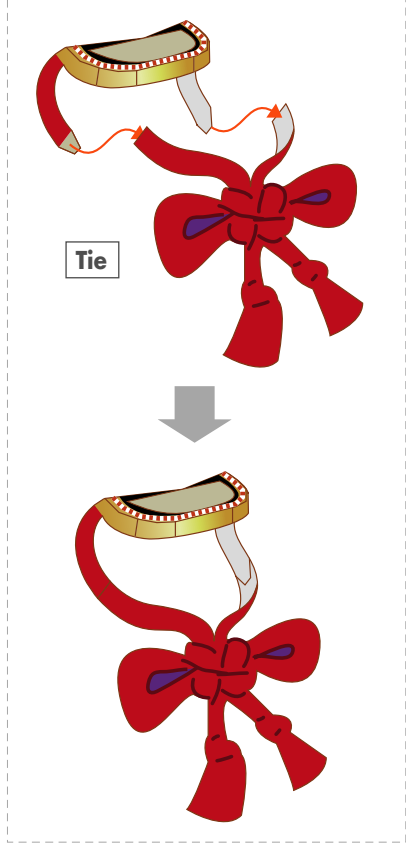
2 Attach the crown and helmet rim 1, 2 and 3



3 Assemble the visor



4 Attach the visor and the tie

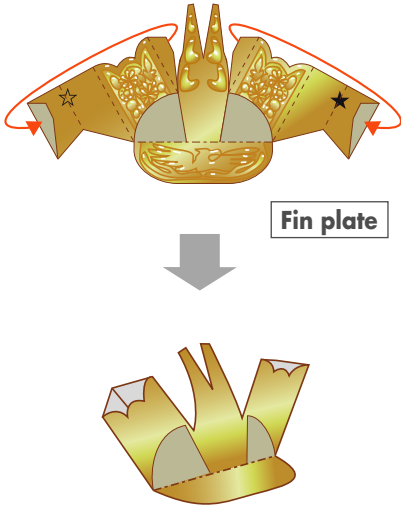


5 Attach the crown and the visor



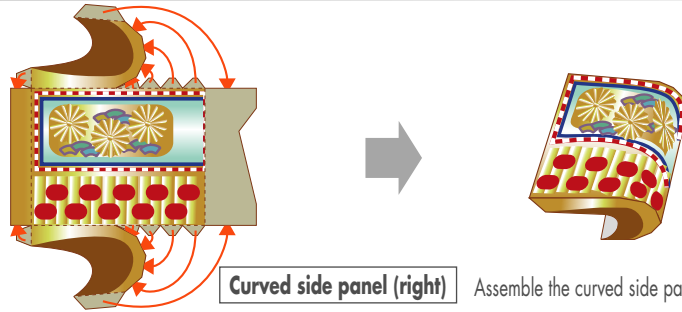
★ Assemble the helmet (2)

6 Assemble the fin plate



Fin plate

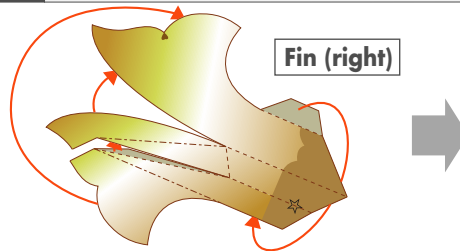
7 Assemble the curved side panel



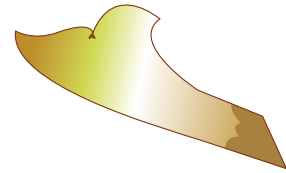
Curved side panel (right)

Assemble the curved side panel (left) in the same way.

8 Assemble the fin

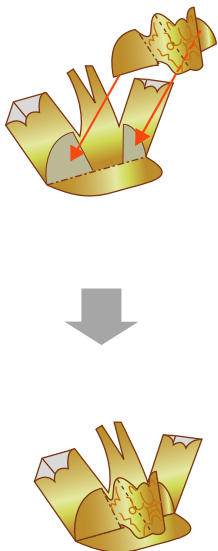


Fin (right)



Assemble the fin (left) in the same way.

9 Attach the fin plate and the front decoration

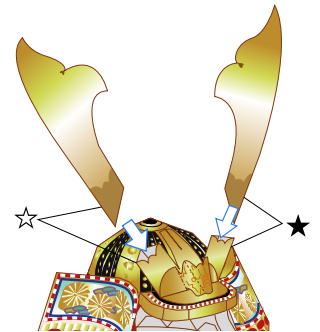


Front decoration

10 Attach the fin plate and curved side panels



11 Insert the fins

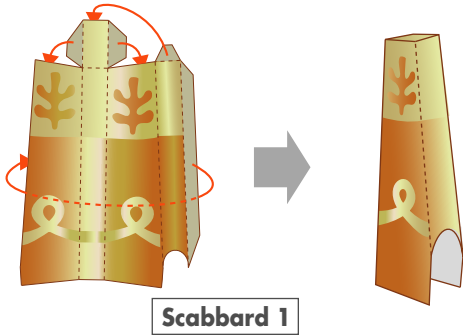


Match up the markings to make sure left and right positionings are correct. Insert without adding glue.

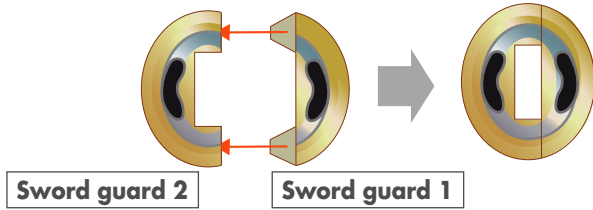


★ Assemble the sword

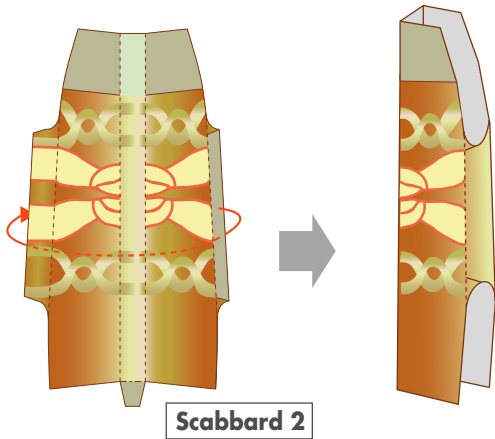
12 Assemble the scabbard 1



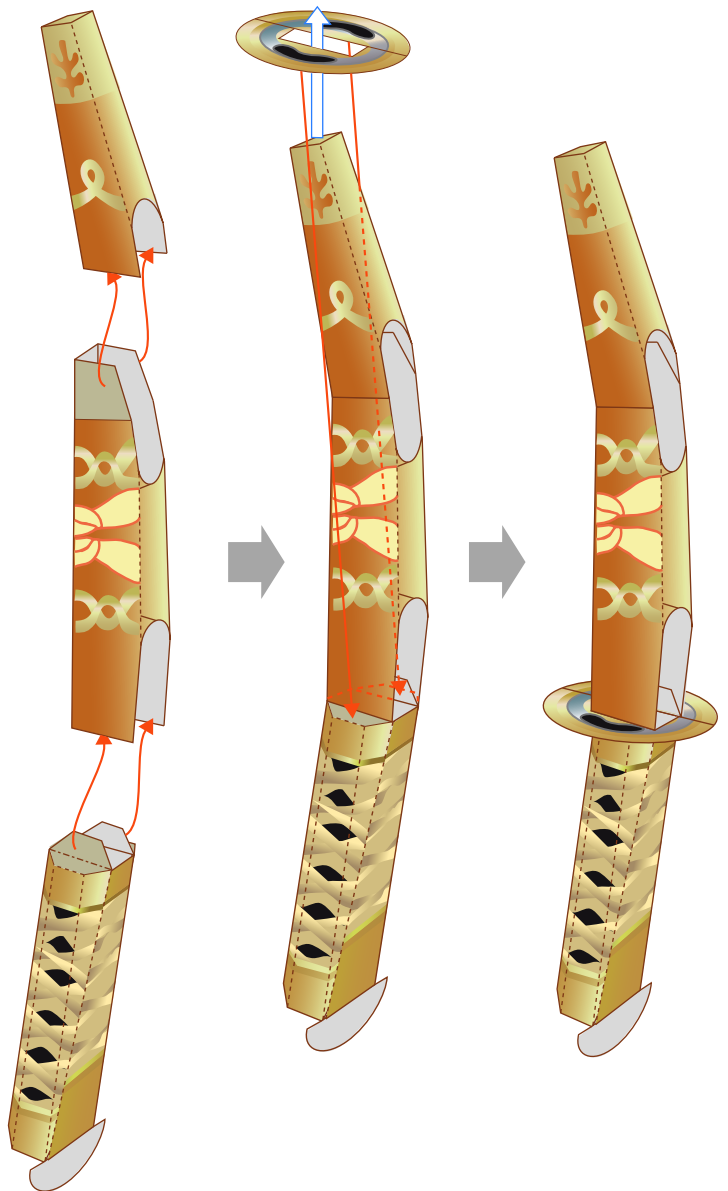
15 Assemble the sword guard



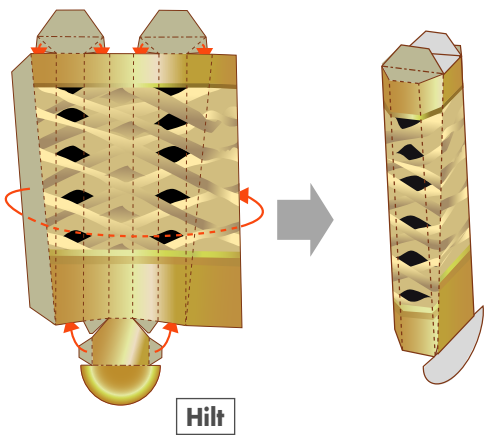
13 Assemble the scabbard 2



16 Assemble the entire sword together



14 Assemble the hilt



★ Assemble the sword stand

17 Assemble the sword stand 4

Sword stand 4

19 Assemble the sword stand 2

Sword stand 2

20 Assemble the sword stand 3

Sword stand 3

Glue together at the back, and cut out.

18 Assemble the sword stand 1

Sword stand 1

21 Assemble the entire sword stand together

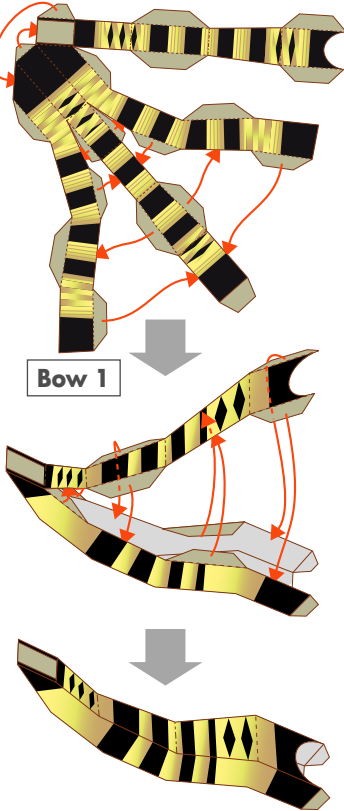
Assemble the bow stand in the same way.

22 Attach the sword to the sword stand, and attach the sword tassel

Sword tassel

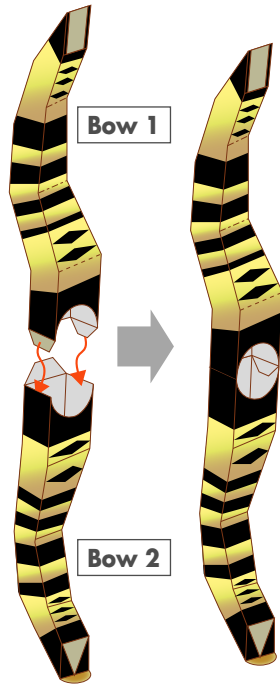
★ Assemble the bow and arrows

23 Assemble the bow



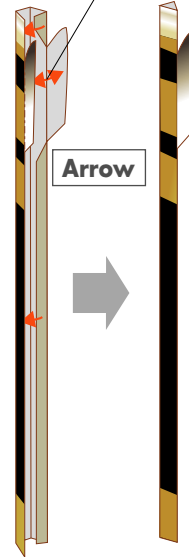
Assemble the bow 2 in the same way.

24 Assemble the entire bow together

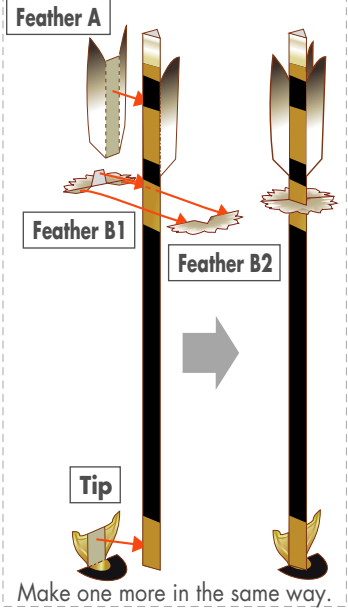


25 Assemble the arrow

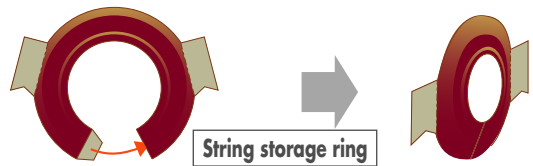
Glue the back sides together here.



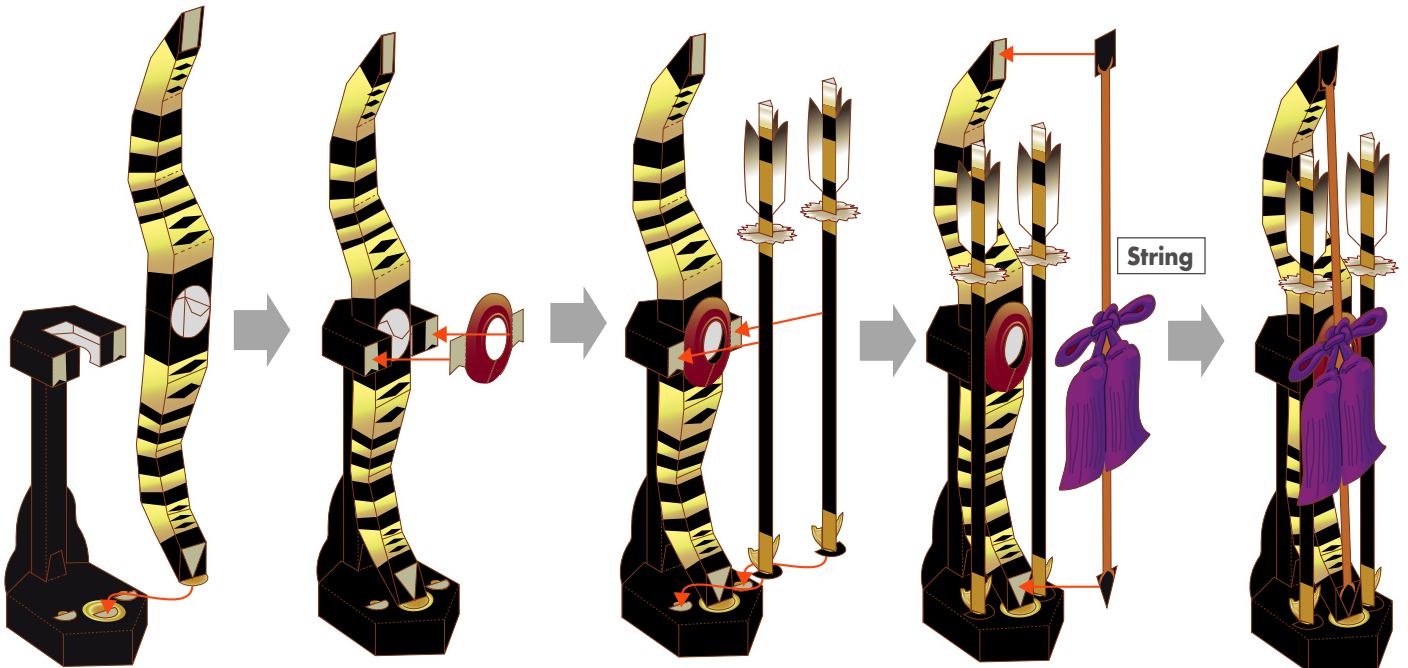
26 Assemble the entire arrow together



27 Assemble the string storage ring

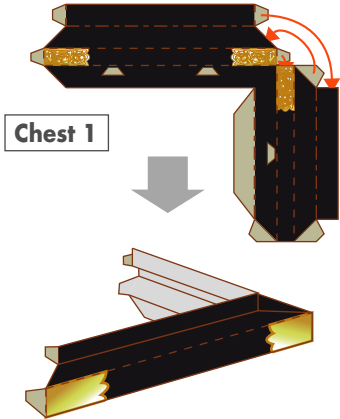


28 Assemble the bow, arrows and stand together



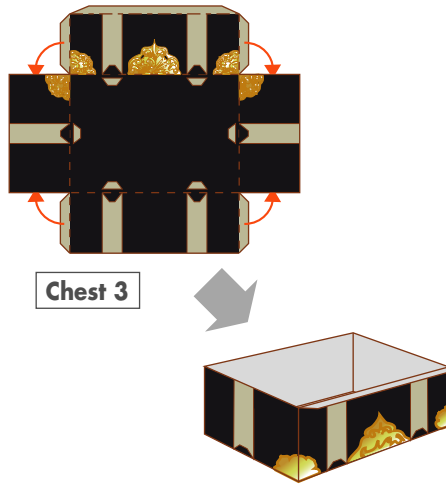
★ Assemble the chest

29 Assemble the chest (1, 2)

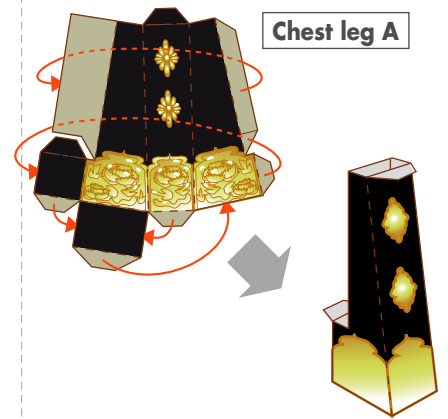


Assemble the chest 2 in the same way.

30 Assemble the chest 3

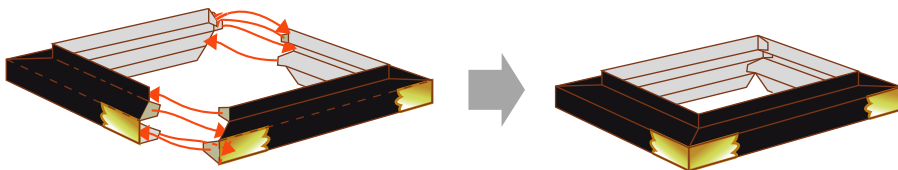


31 Assemble the chest legs (A, B)

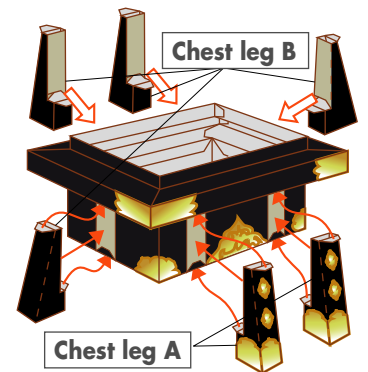


Assemble the chest leg B in the same way.

32 Attach chest parts 1 and 2

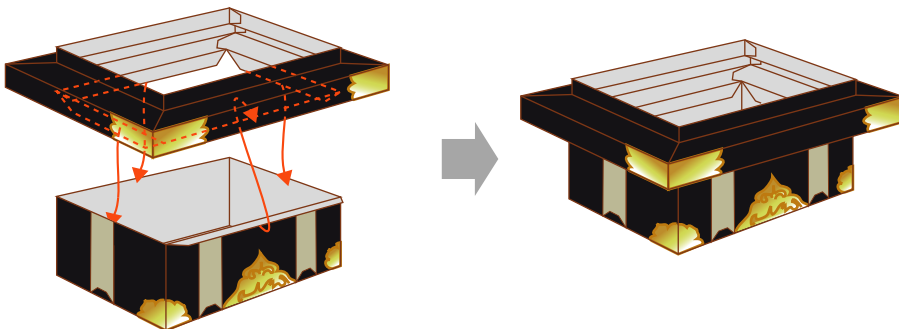


34 Attach the chest legs

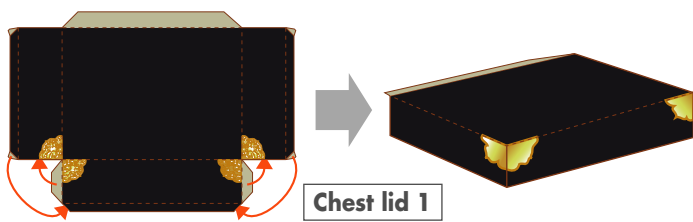


Be careful to get the positions for A and B right.

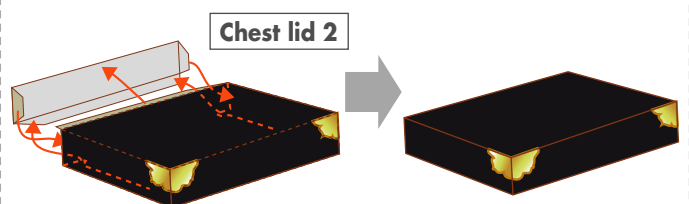
33 Attach chest 3



35 Assemble the chest lid 1



36 Attach the chest lid parts 1 and 2



★ Assemble the display stand and cloth

37 Attach display stand parts 1 and 2

Attach display stand parts 4 and 5 in the same way.

38 Attach display stand part 3 (to make the left half)

Assemble the display stand (right) in the same way.

39 Attach the left and right halves together

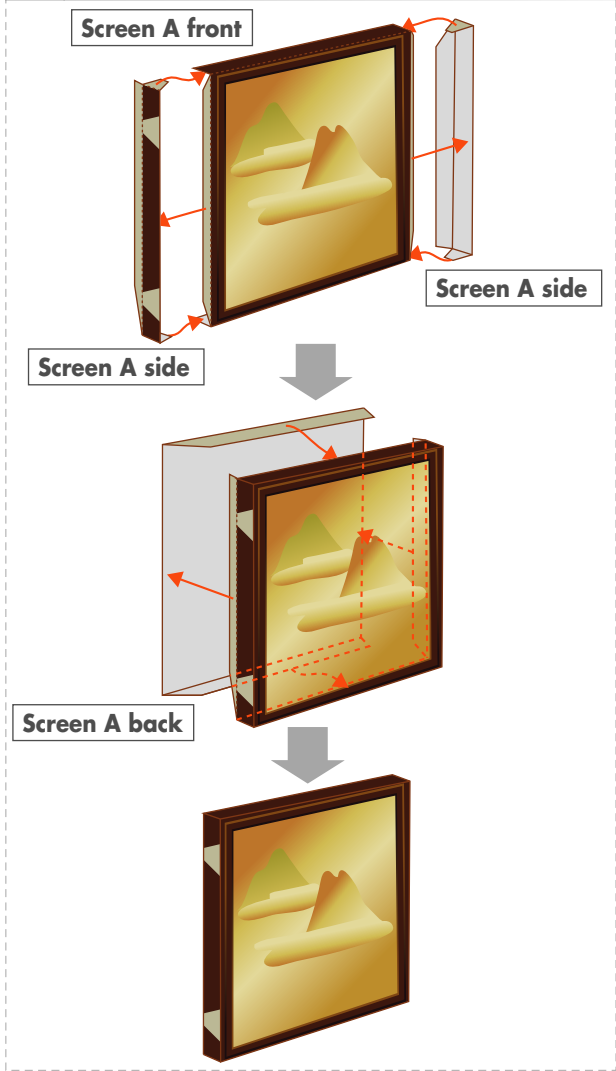
40 Assemble the display stand reinforcers

41 Attach the reinforcing parts

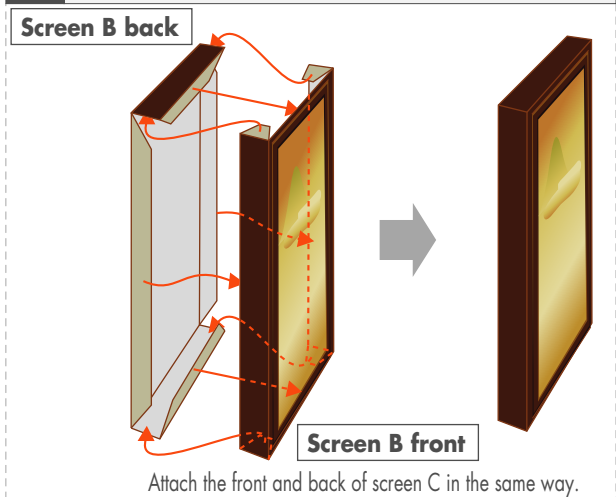
42 Assemble the cloth

★ Assemble the screen

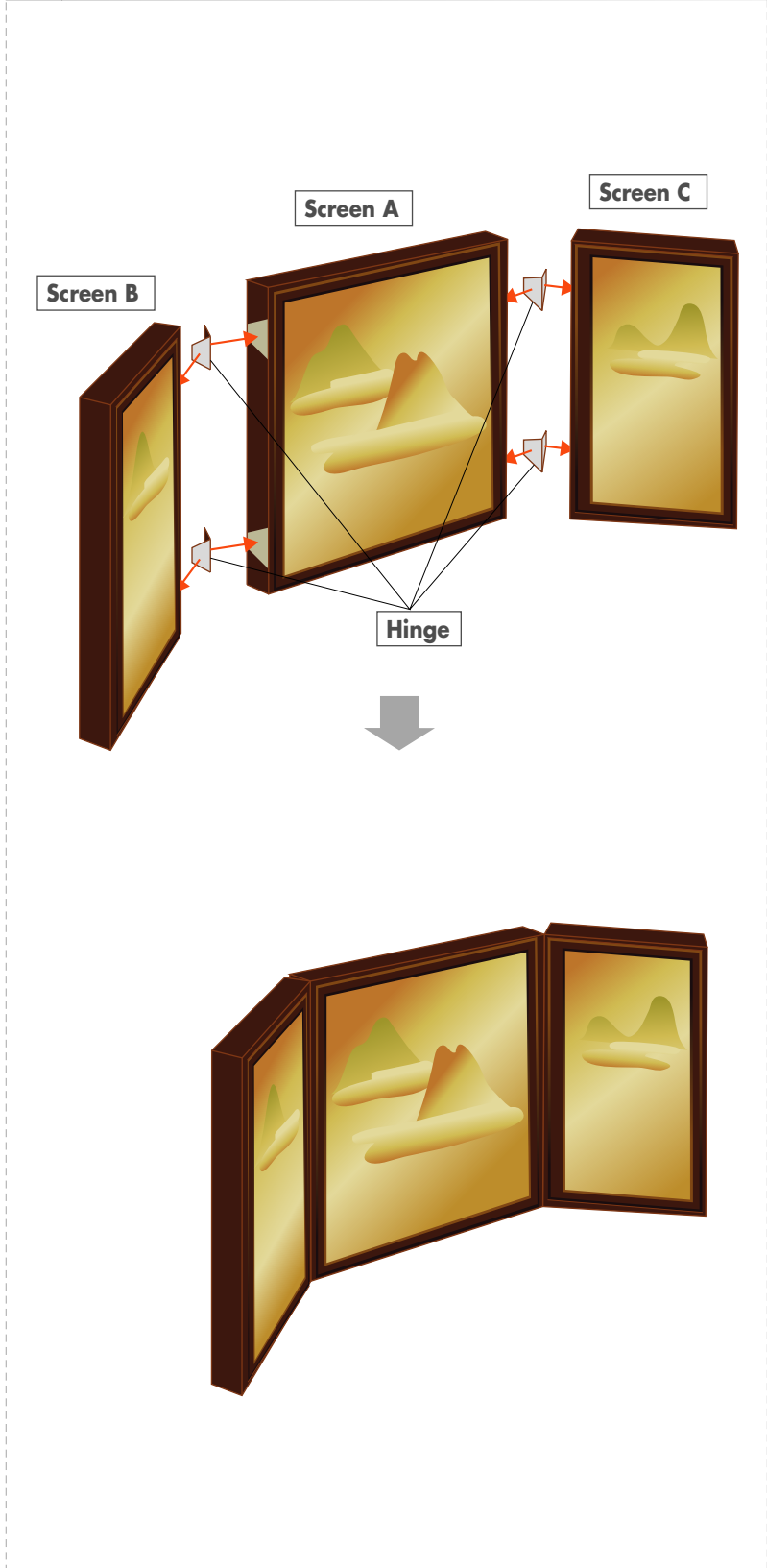
43 Attach the front, sides and back of screen A



44 Attach the front and back of screen B

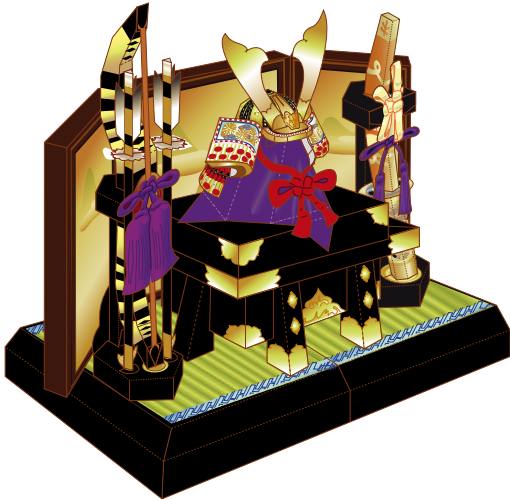


45 Attach the hinges, and join screens A, B and C together



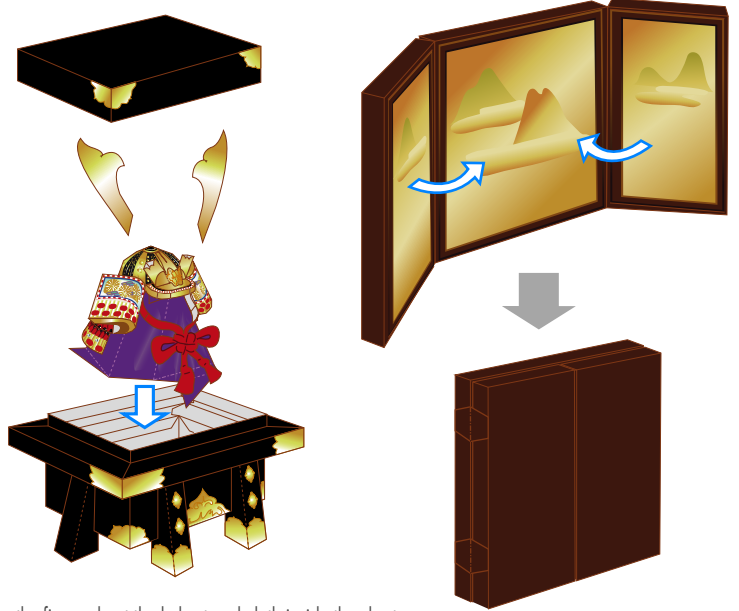
★ How to display and put away; completed picture

46 How to display



Place on top of the display stand as shown.

47 How to put away



Remove the fins and put the helmet and cloth inside the chest.

The screens can be folded up.

48 Complete!

