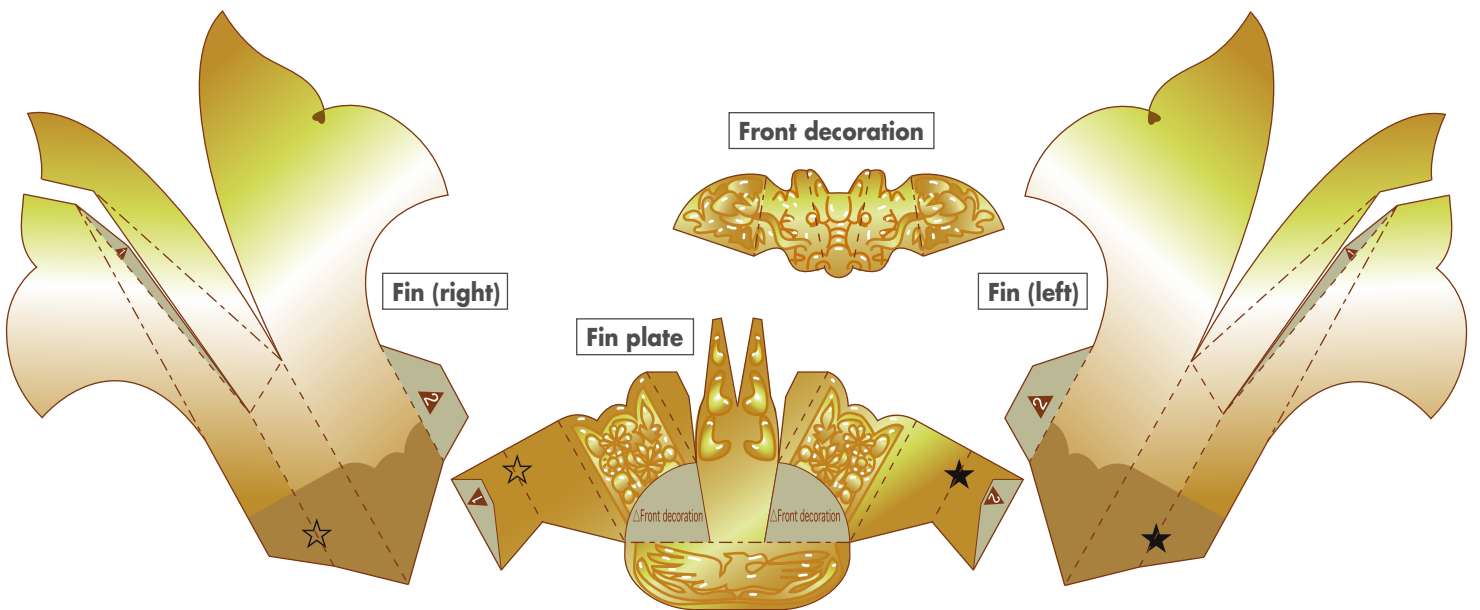
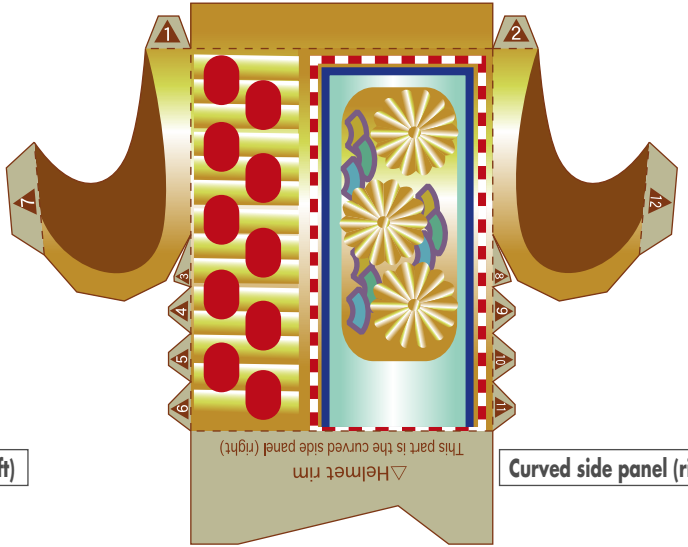
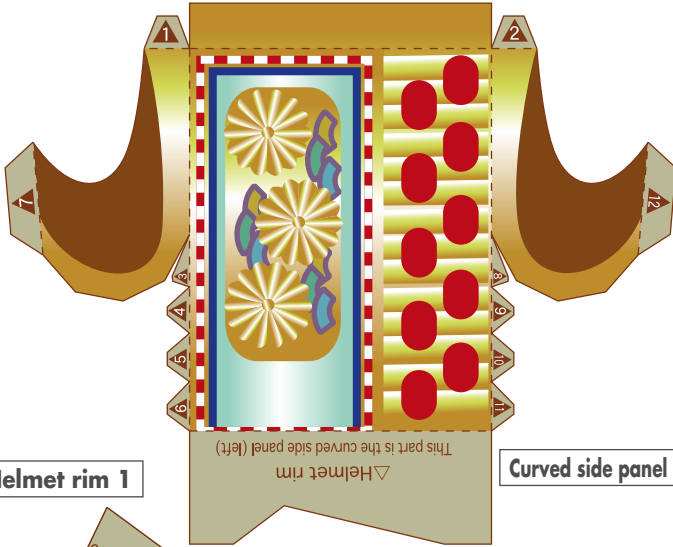


Samurai helmet decoration

A kabuto kazari is a decoration featuring a Samurai helmet (kabuto) in the middle, with a bow and sword on either side. It is displayed in homes in Japan on "Boys' Day" (May 5th), and is said to ward off evil and bring good health for the boy children in the house. Boys' Day is one of Japan's annual festivals, and its origins lie in Chinese evil spirit eradication ceremonies. During Japan's long history as a nation run by Samurai, helmets and armor were regarded as extremely important items for keeping a man safe in battle, and today they are still viewed as symbols of protection. The decorations for Boys' Day include outdoor decorations ("koinobori" carp streamers, flags with warrior paintings) and indoor decorations (armor, kabuto kazari and dolls of children dressed as Samurais). The koinobori represent success in life, while the indoor decorations are for the child's health, so it is thought to be a good idea to display both types of decoration to receive their different blessings.



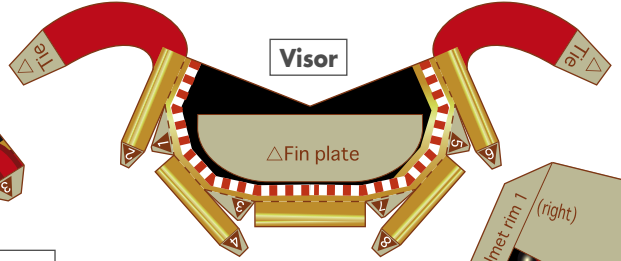
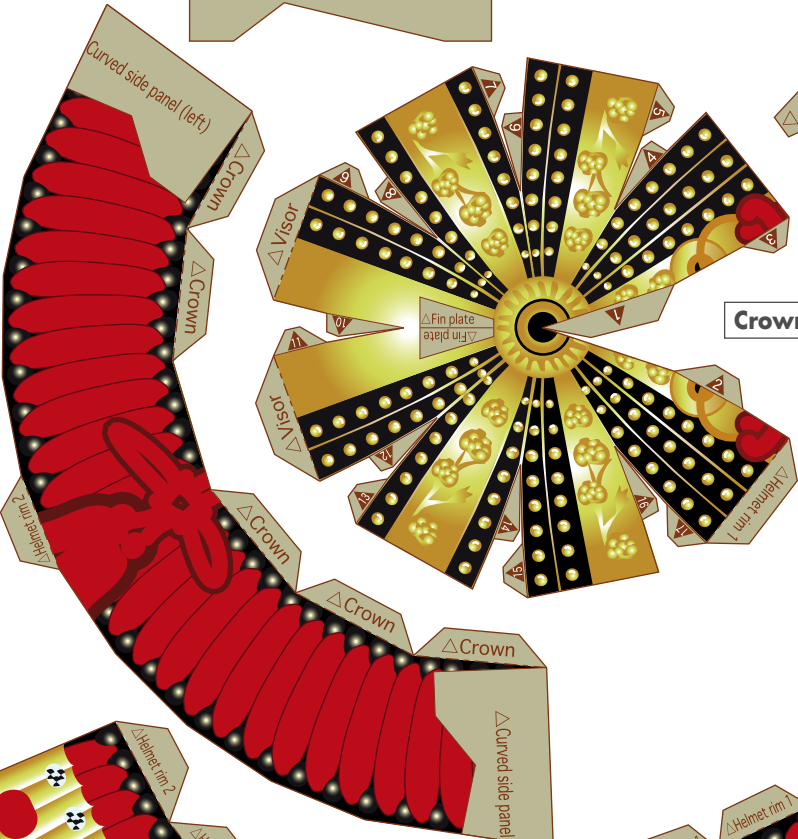


Helmet rim 1

Curved side panel (left)

Curved side panel (right)

Curved side panel (right)

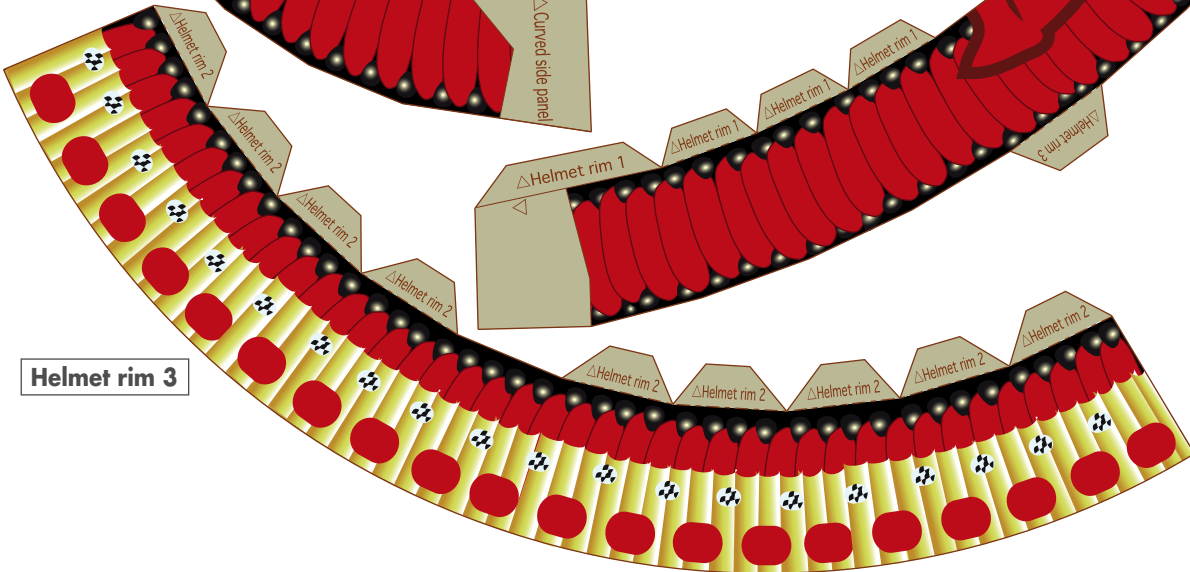


Crown

Visor

Fin plate

Helmet rim 1 (right)

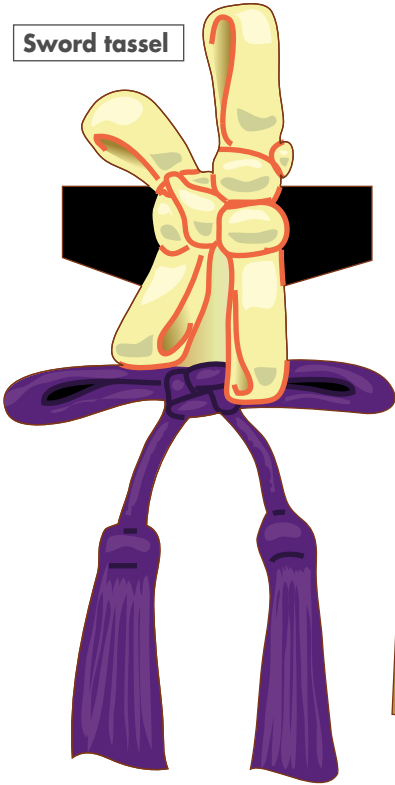


Helmet rim 2

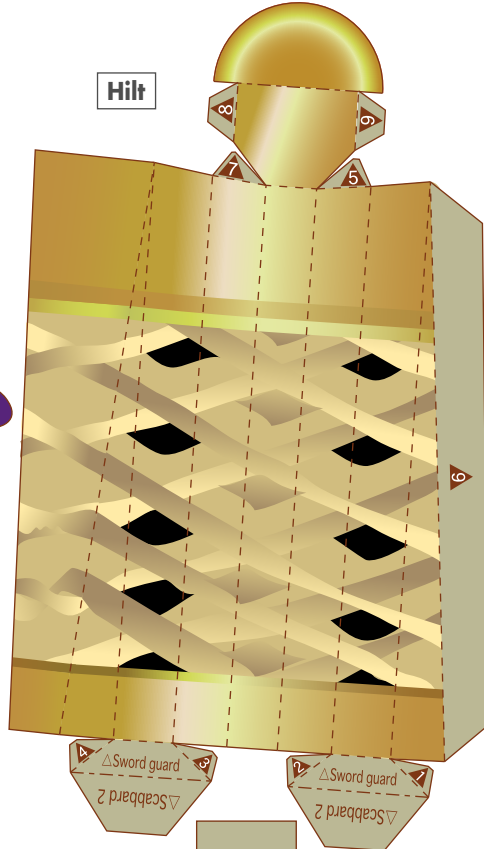
Helmet rim 3



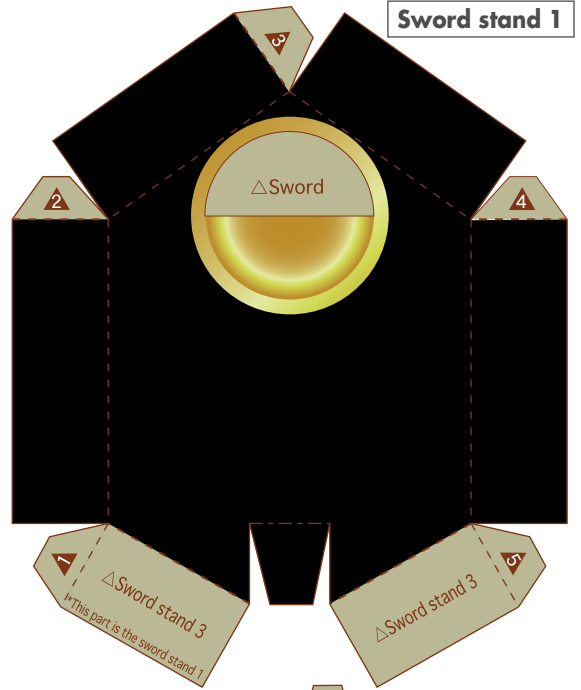
Sword tassel



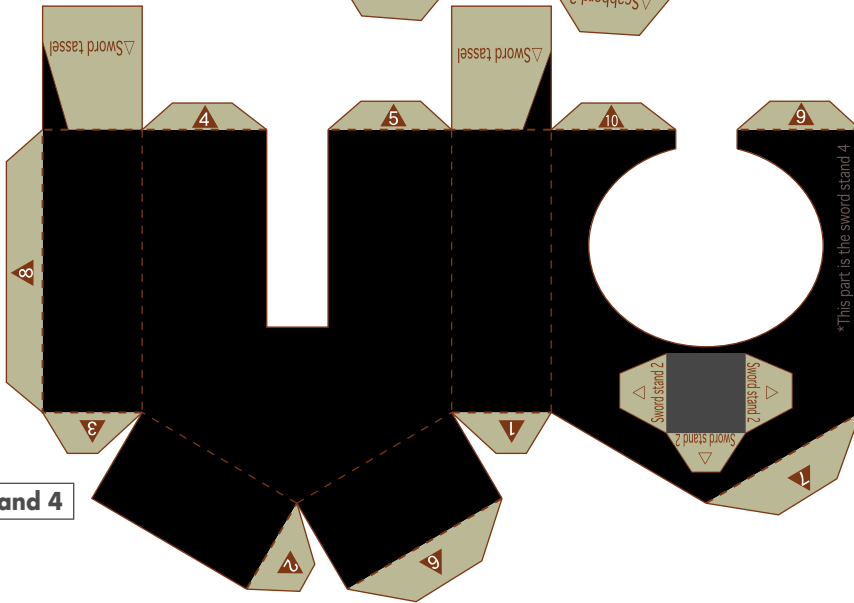
Hilt



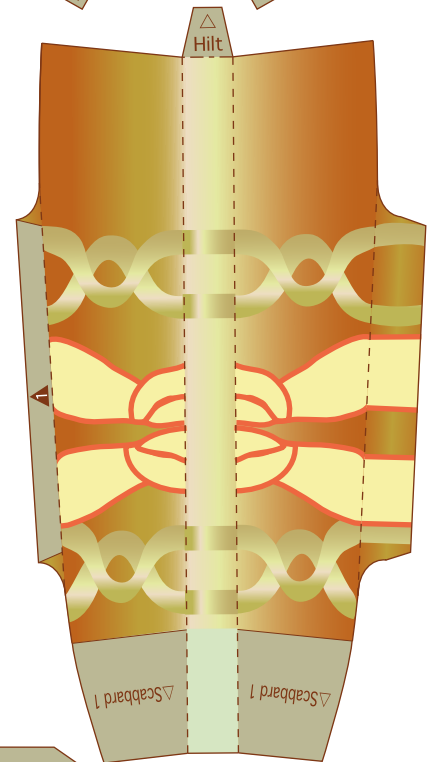
Sword stand 1



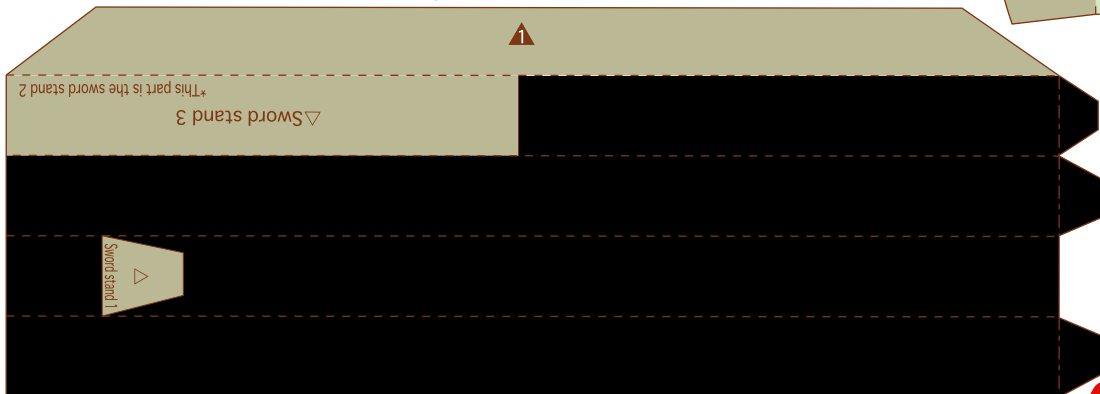
Sword stand 4



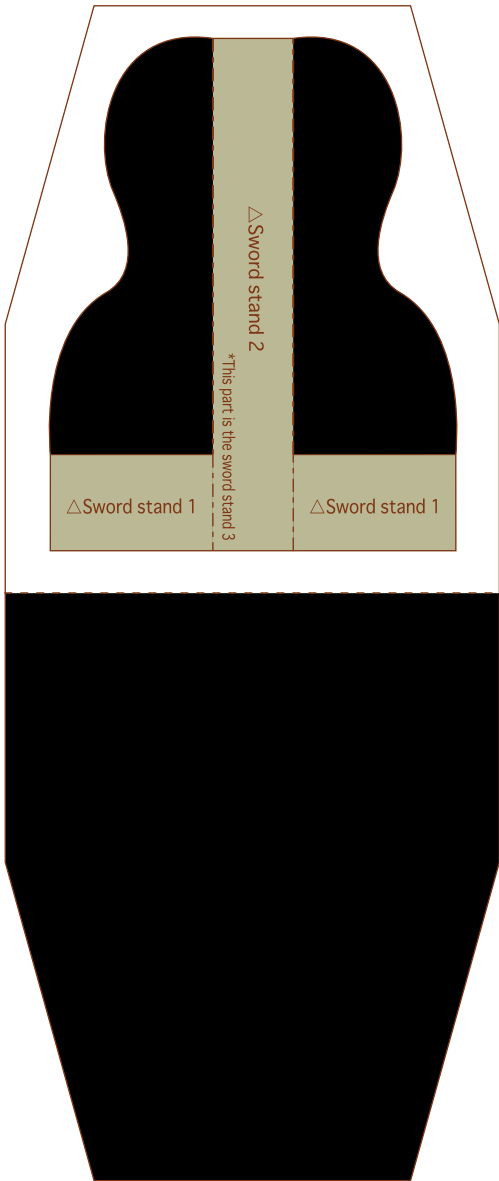
Scabbard 2



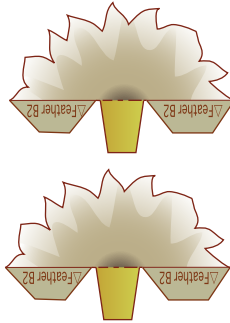
Sword stand 2



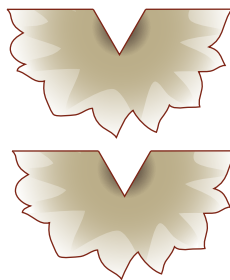
Sword stand 3



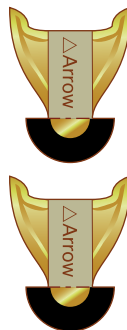
Feather B1 × 2



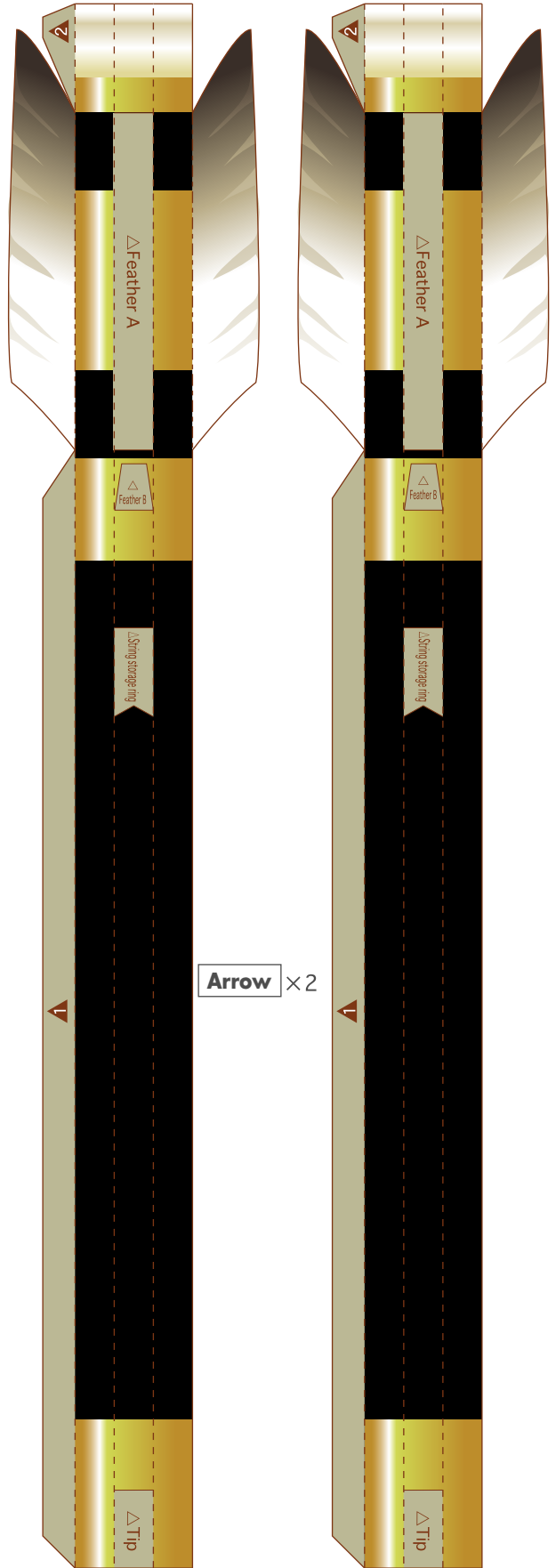
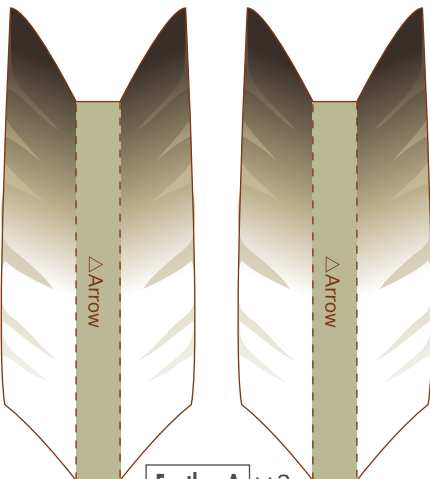
Feather B2 × 2

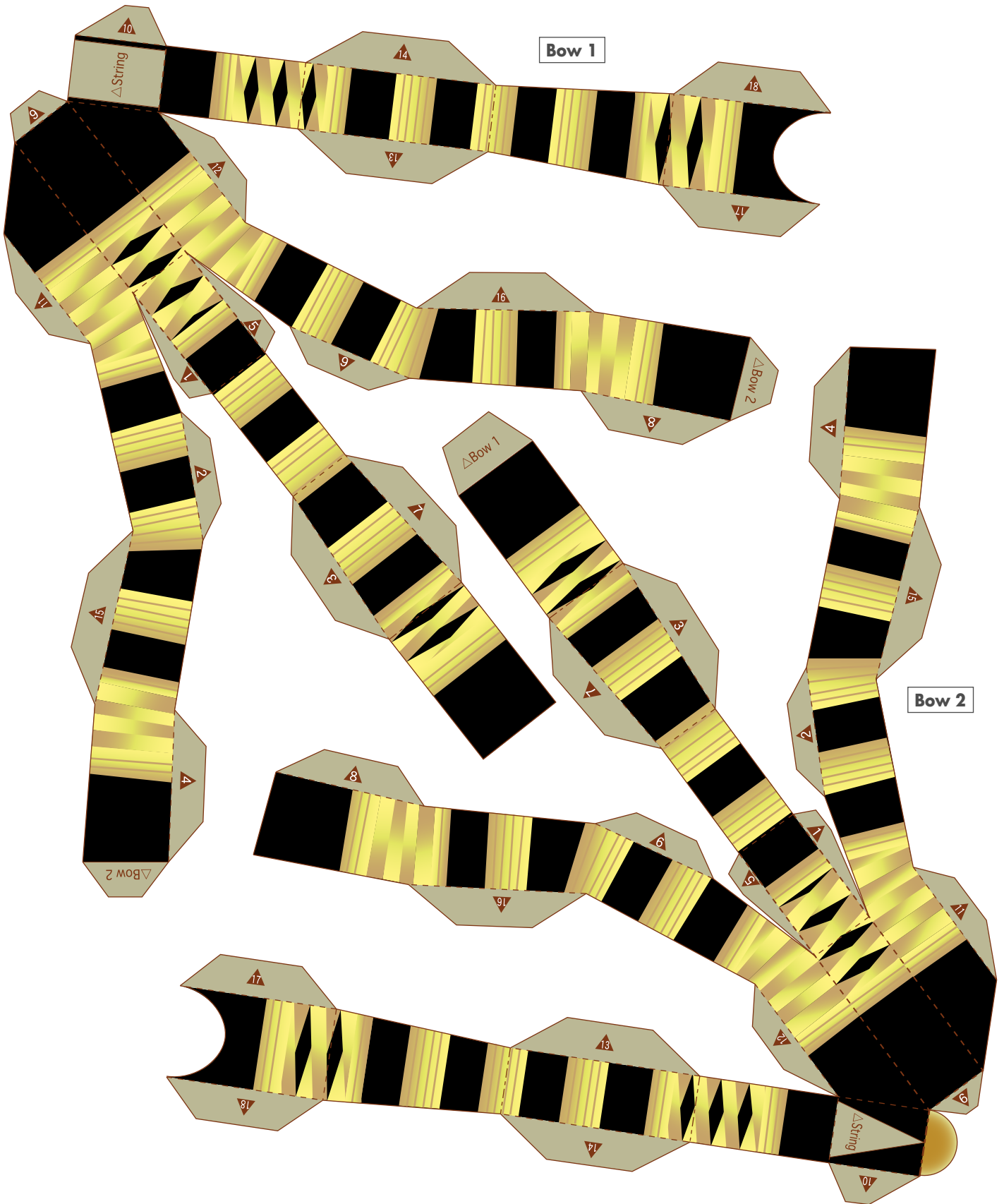


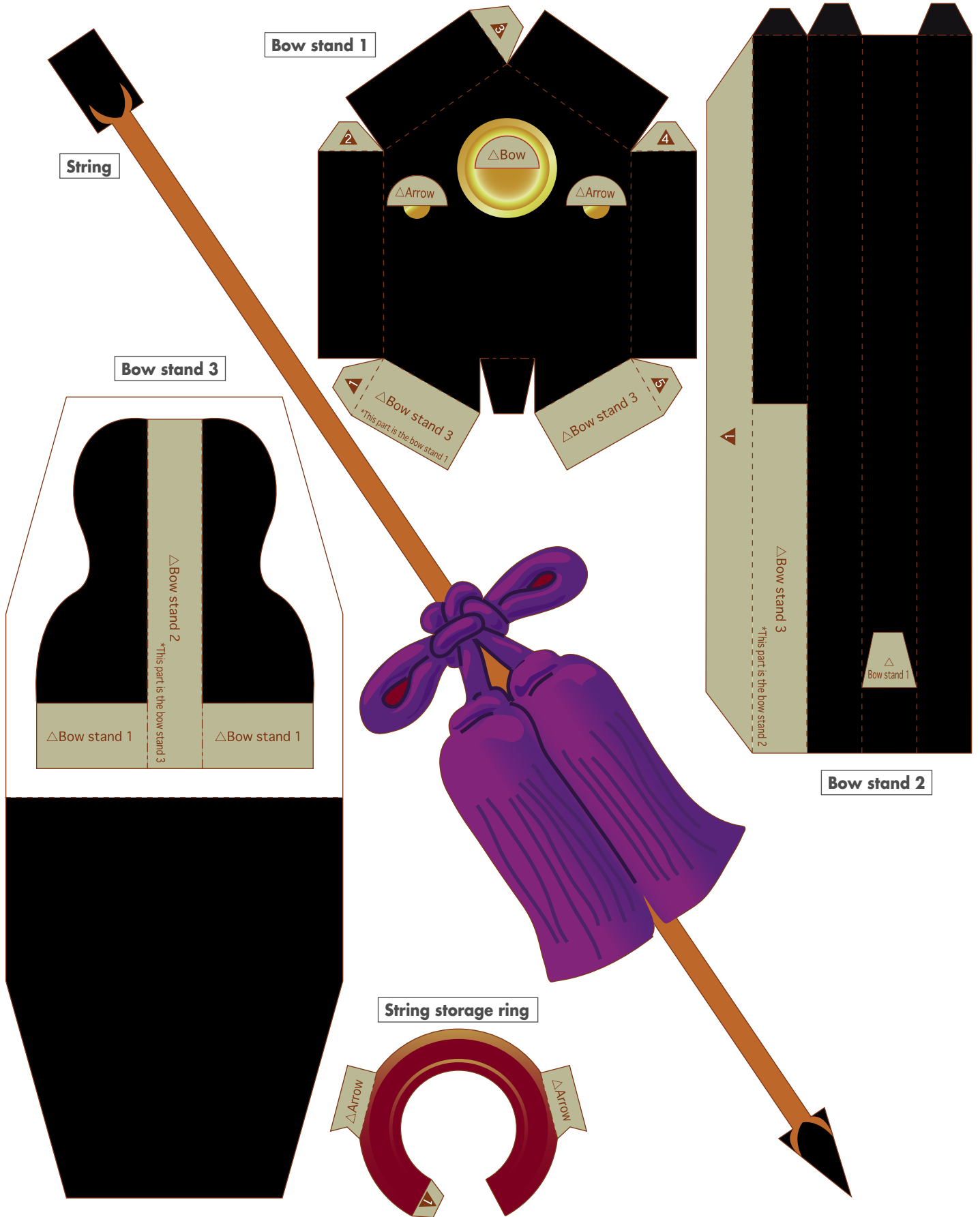
Tip × 2

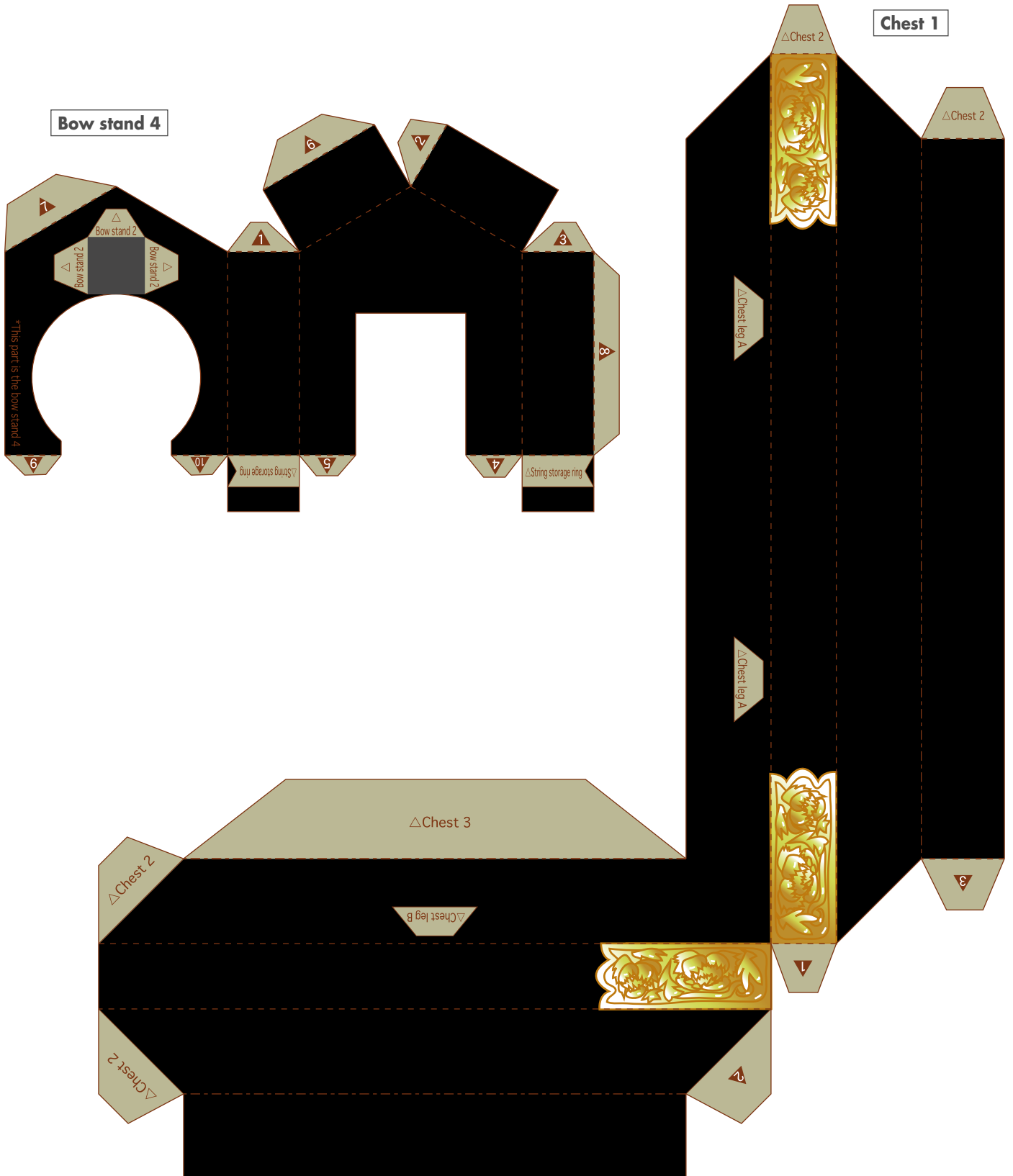


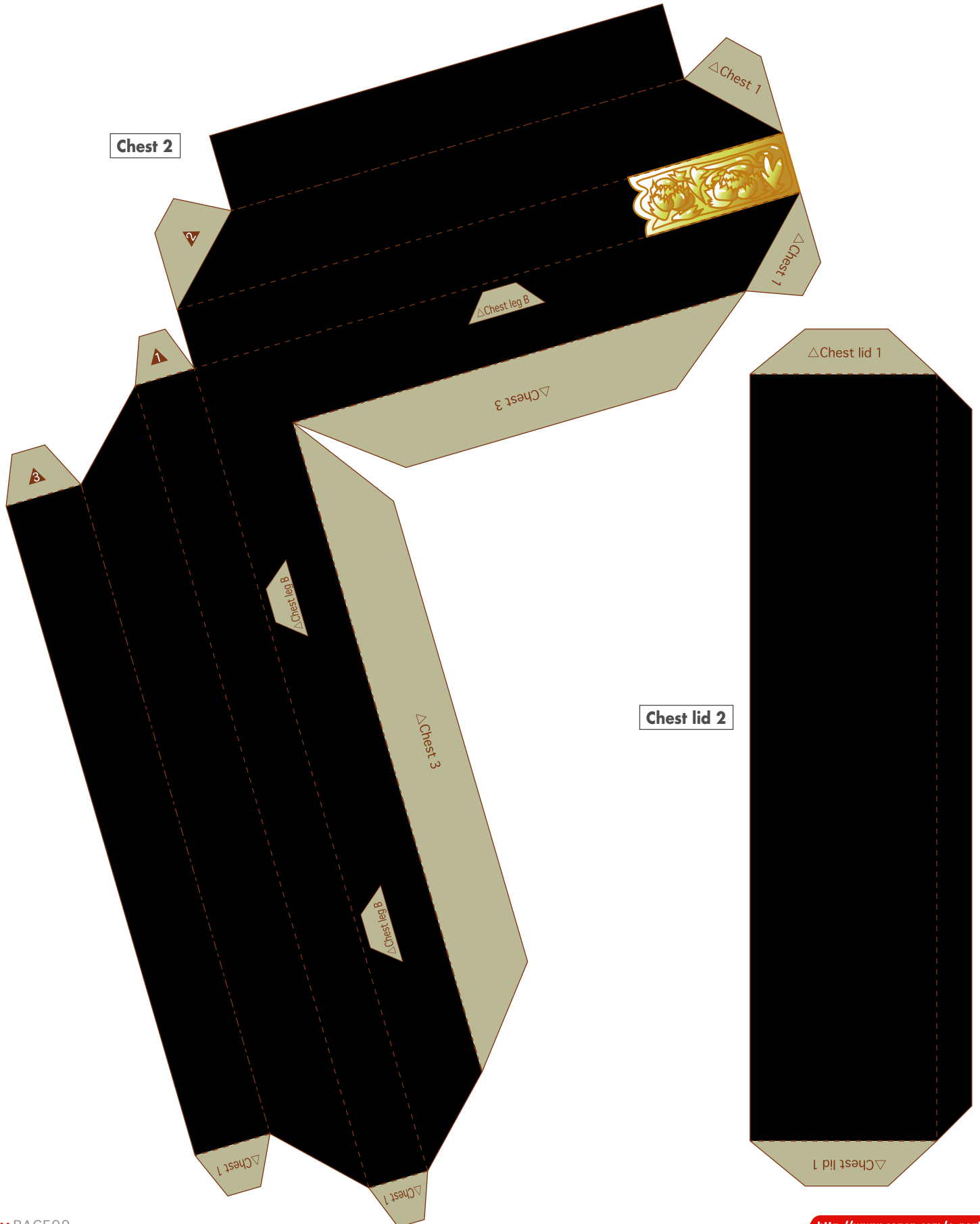
Feather A × 2

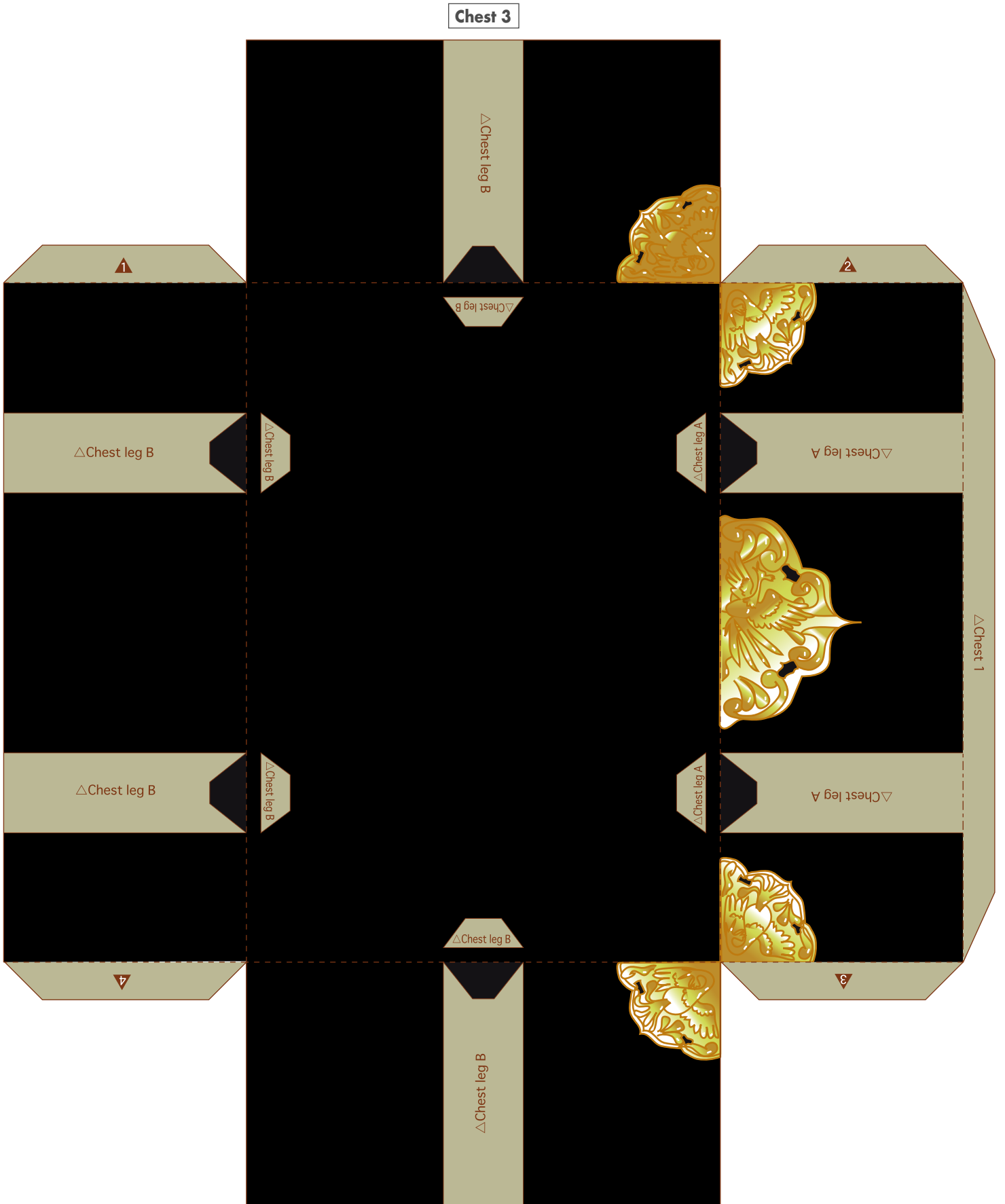




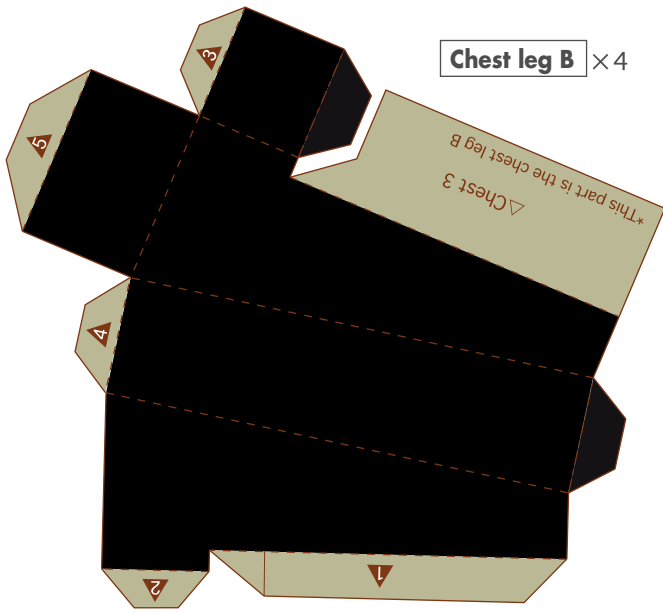




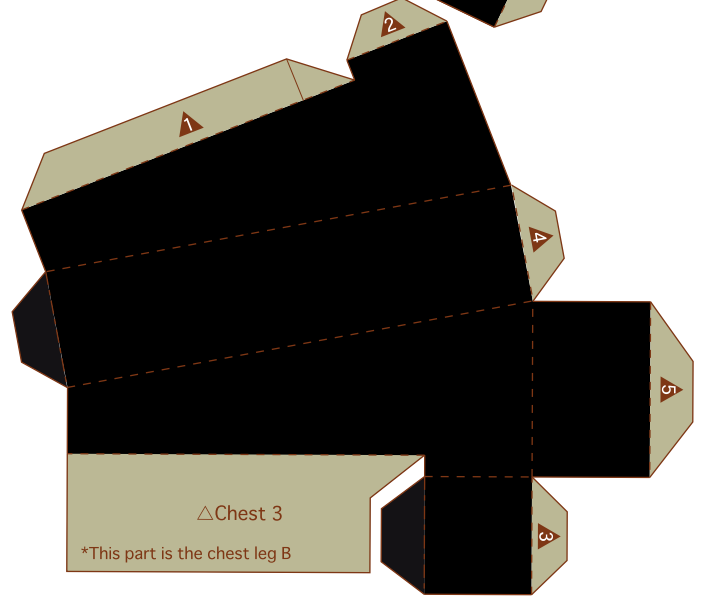
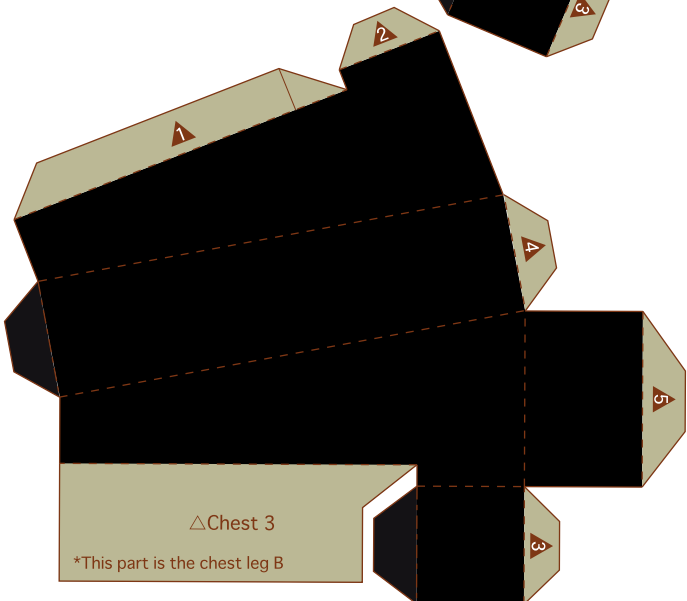
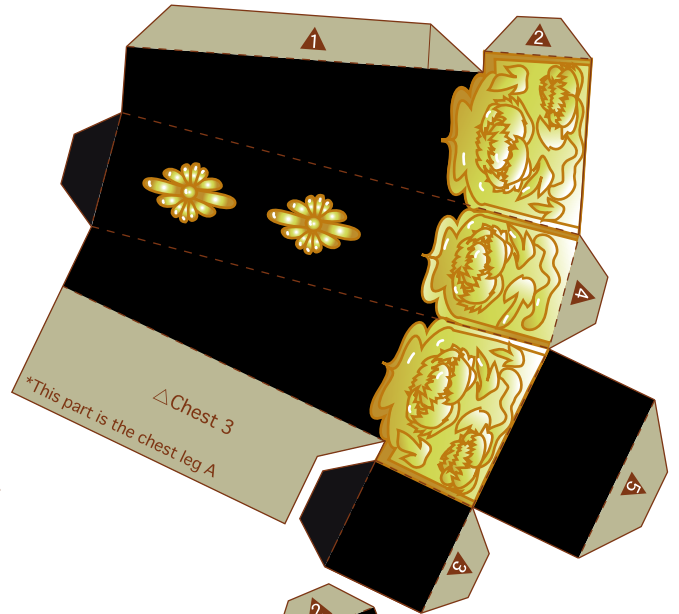
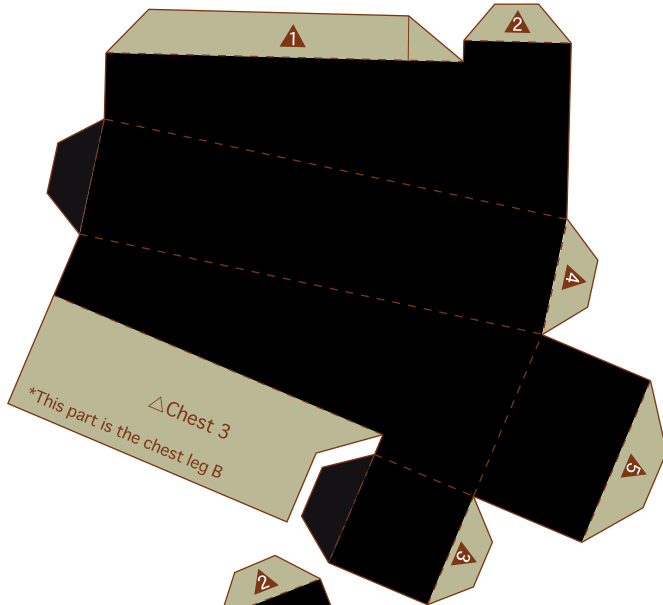
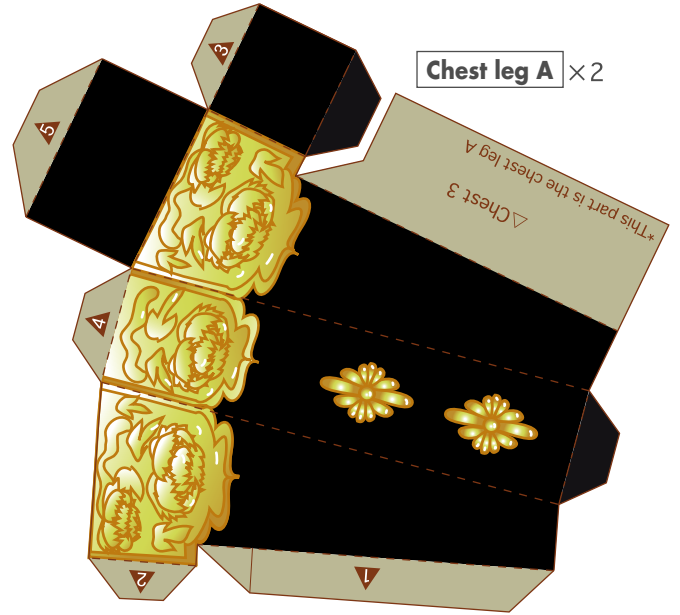


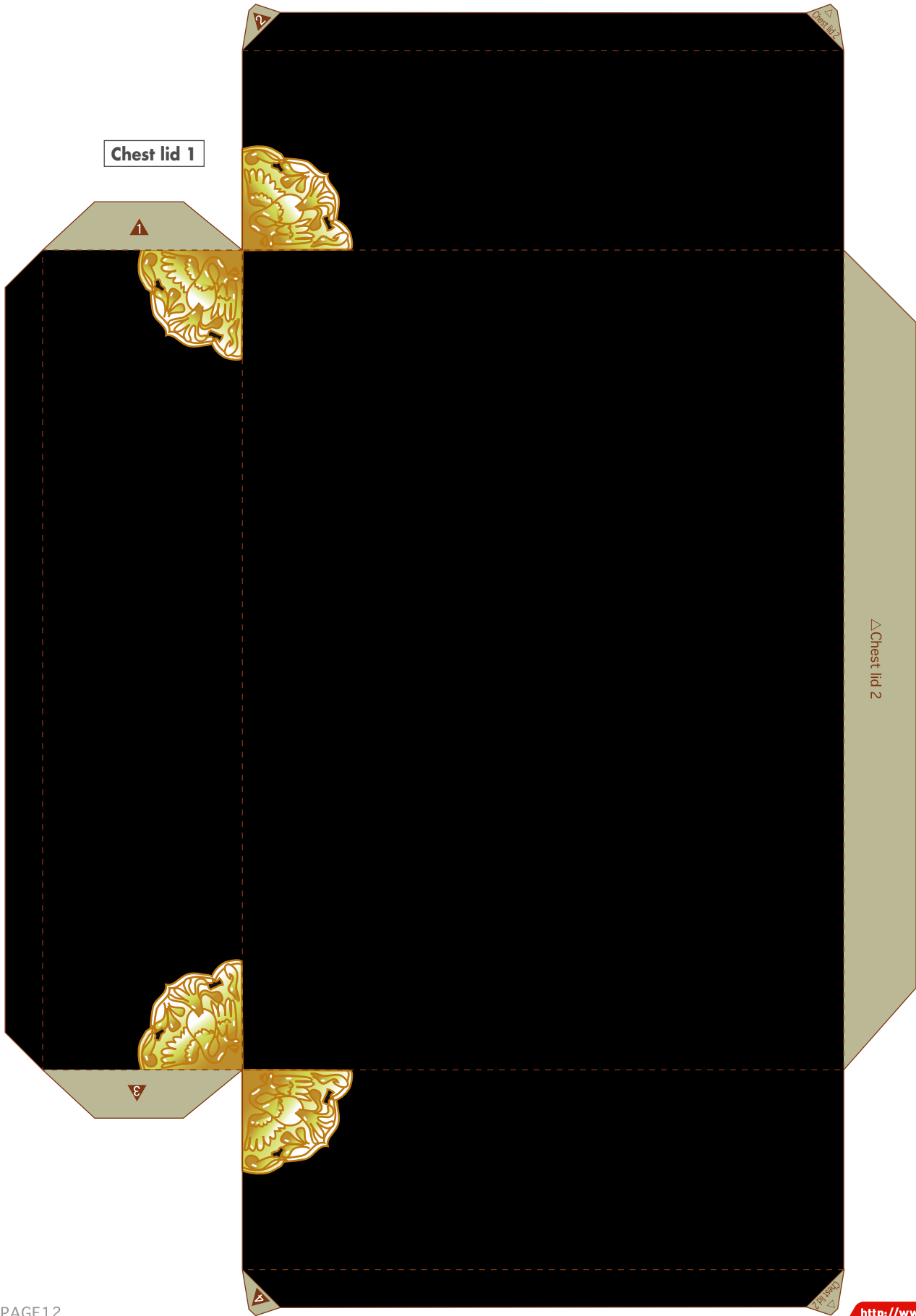


Chest leg B × 4

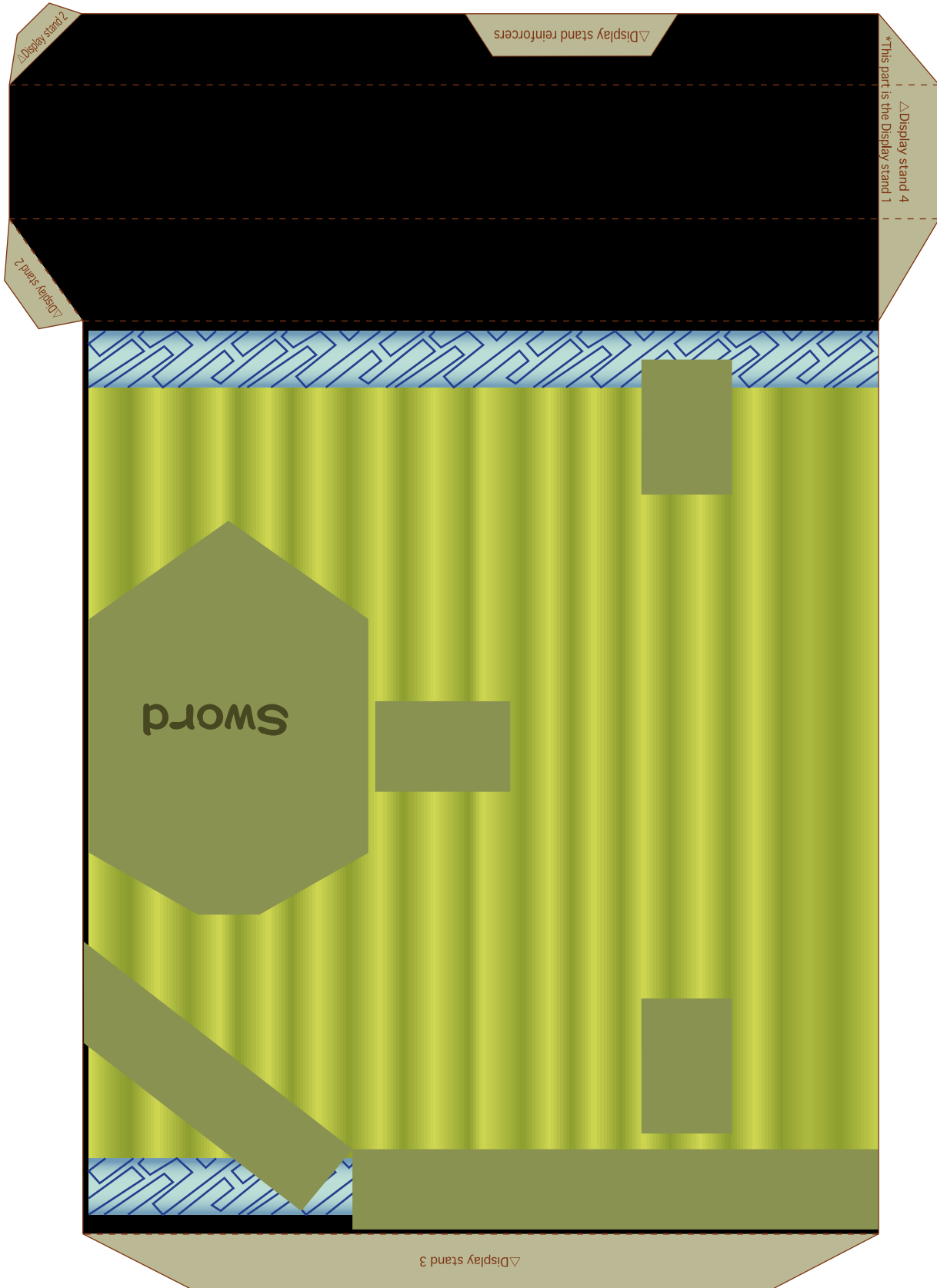


Chest leg A × 2

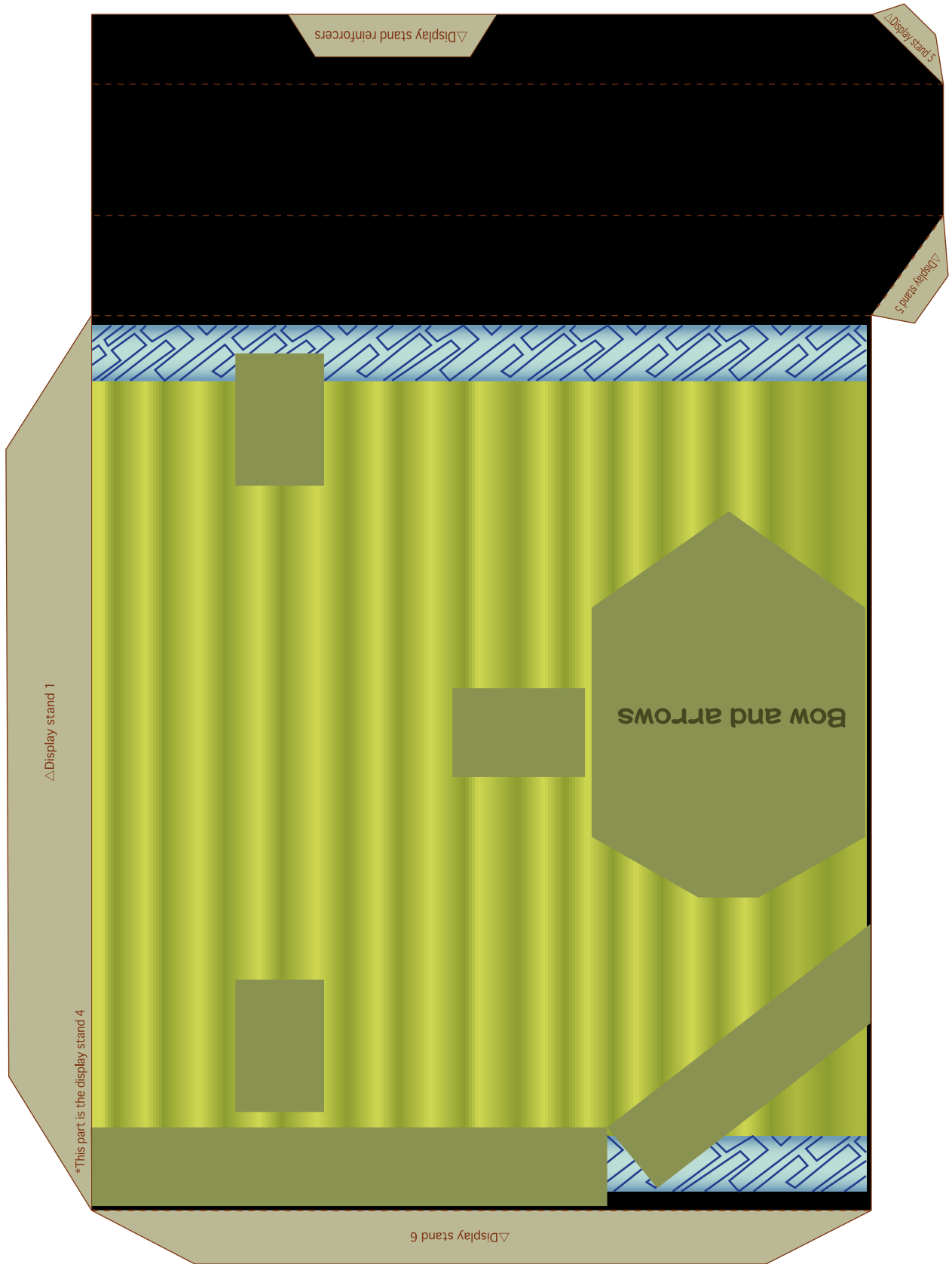




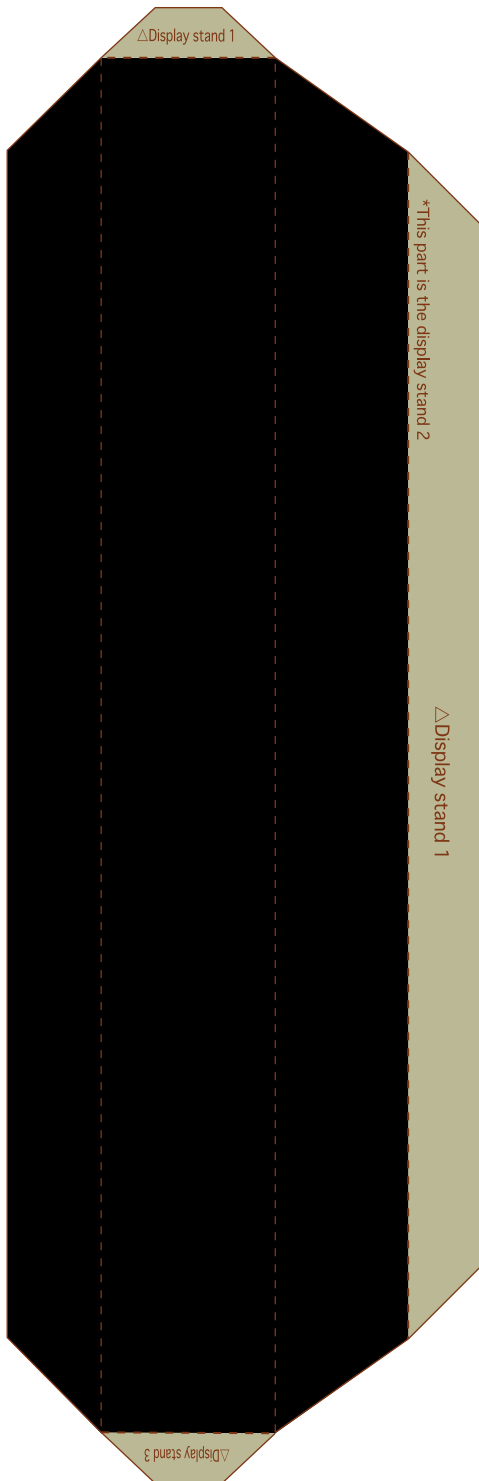
Display stand 1



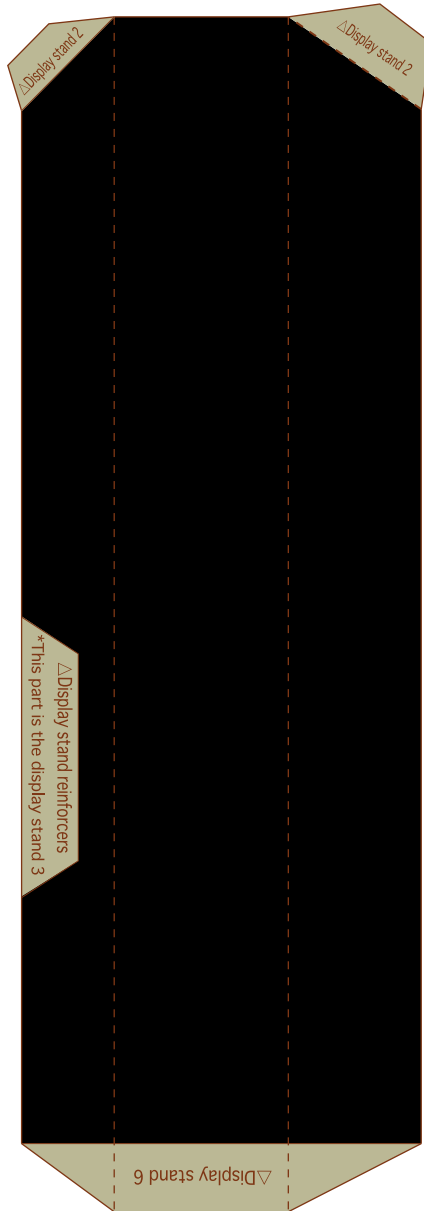
Display stand 4



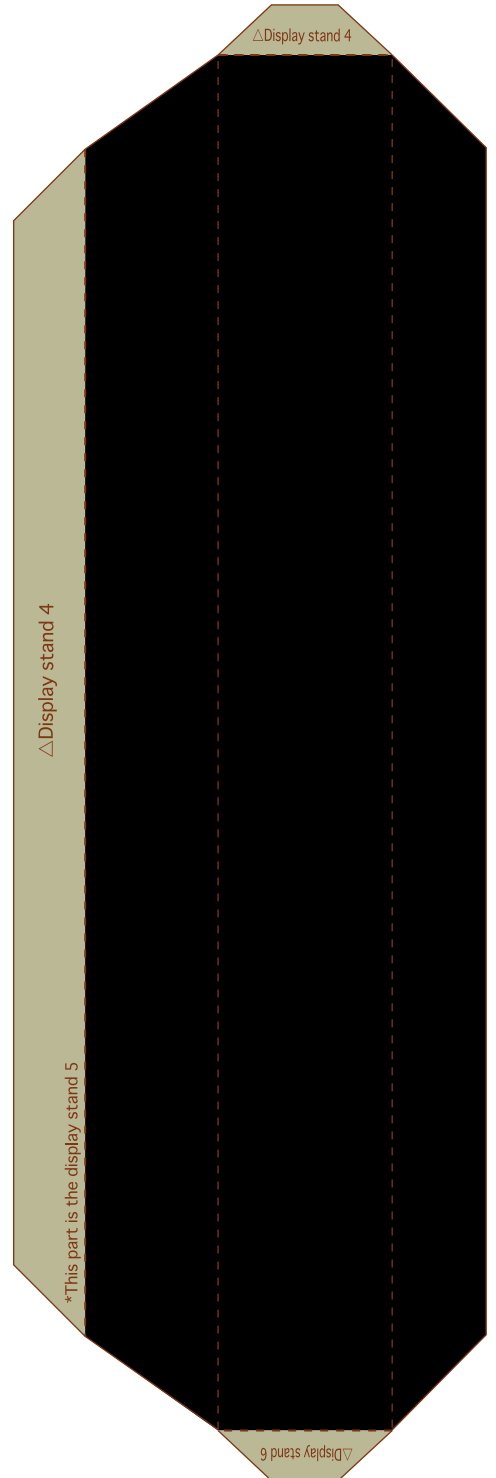
Display stand 2



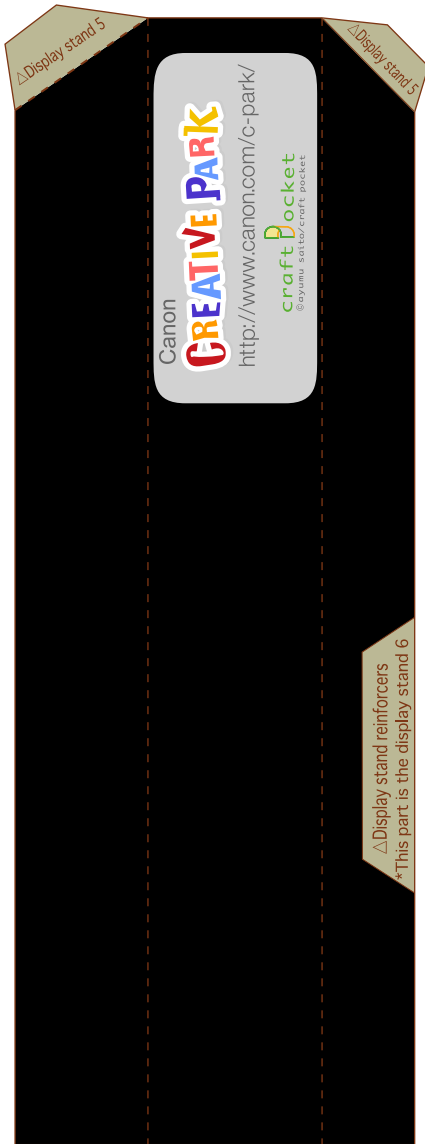
Display stand 3



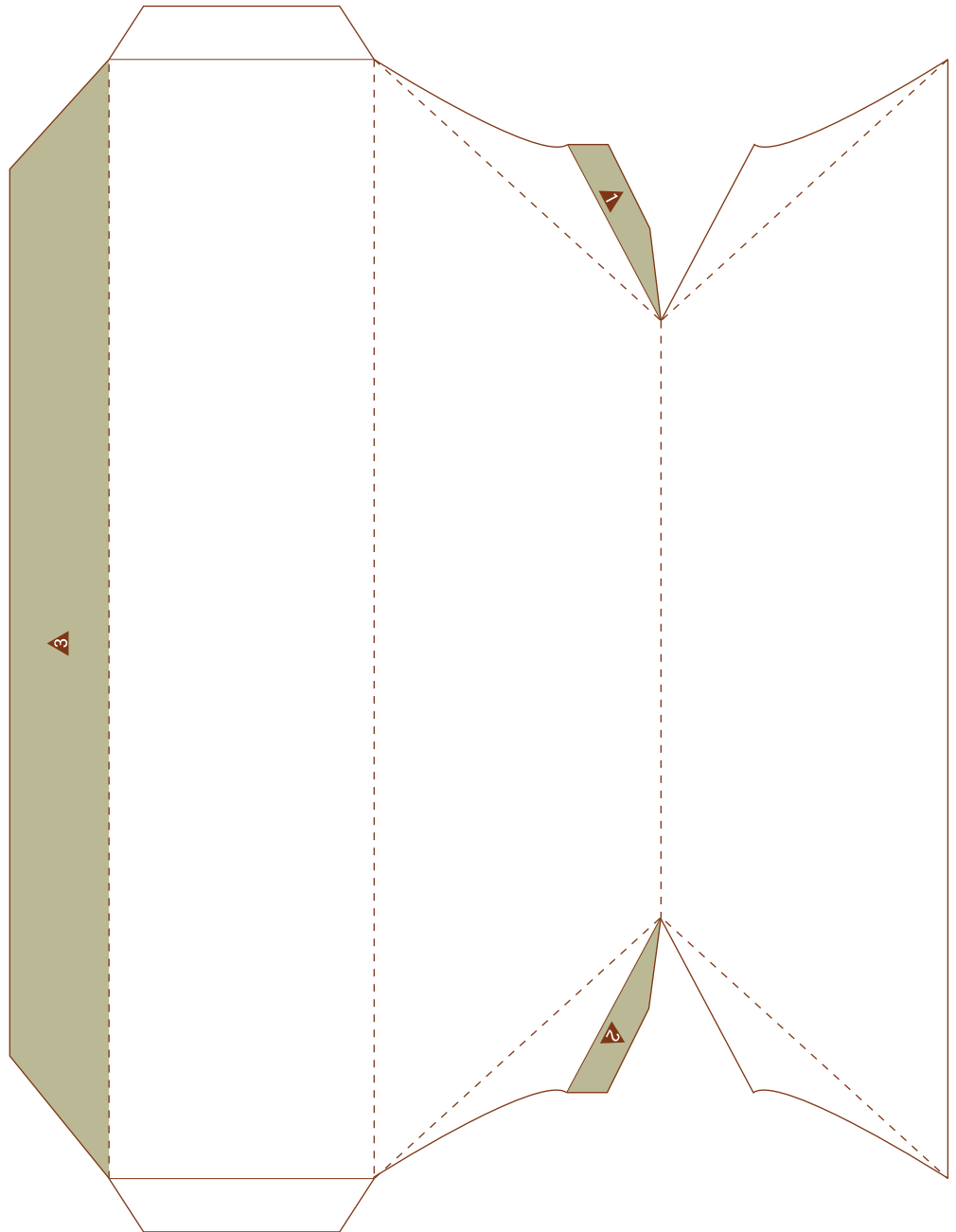
Display stand 5



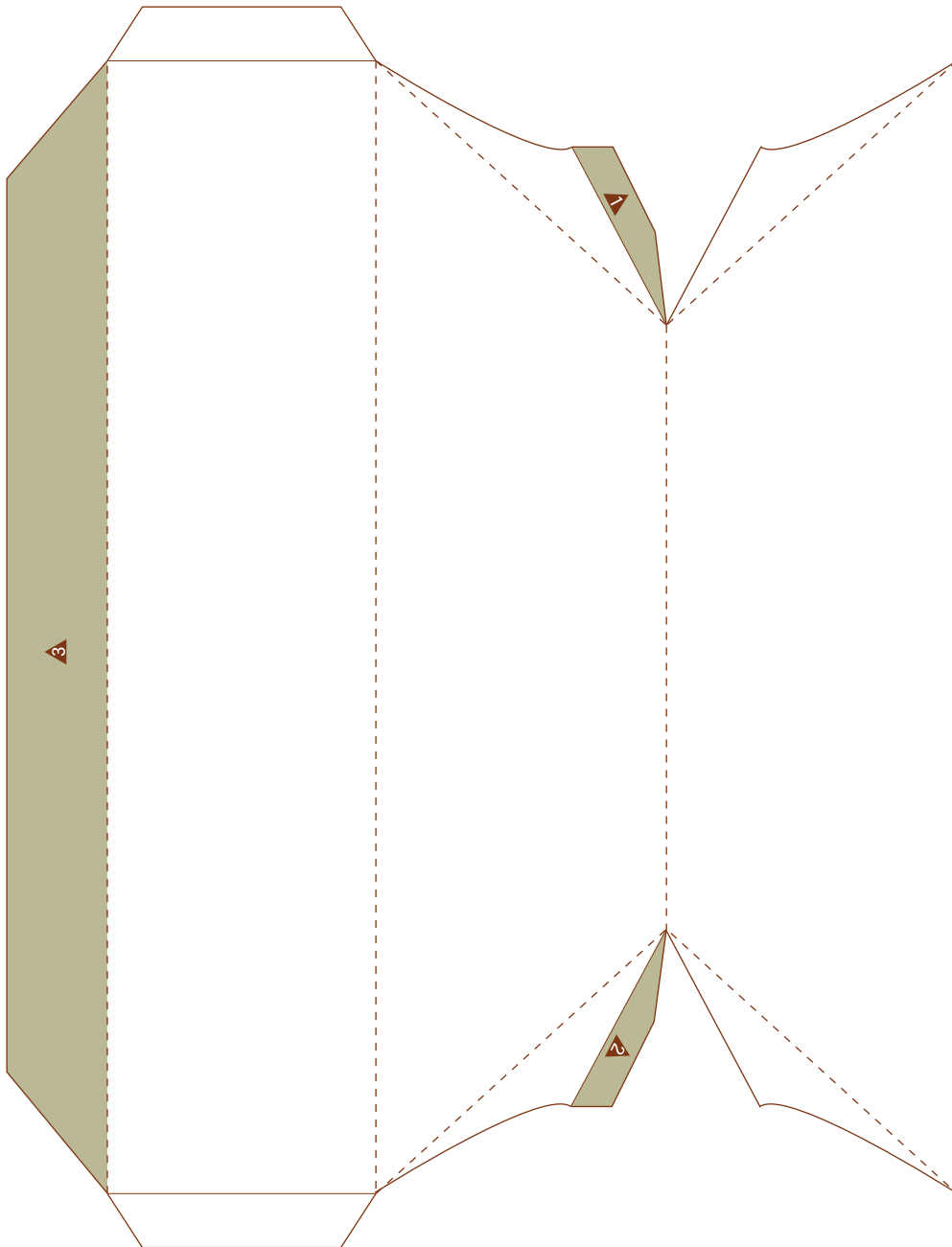
Display stand 6



Display stand reinforcers



Display stand reinforcers



Screen A front



Screen A back

△Screen A front

*This part is the screen A back

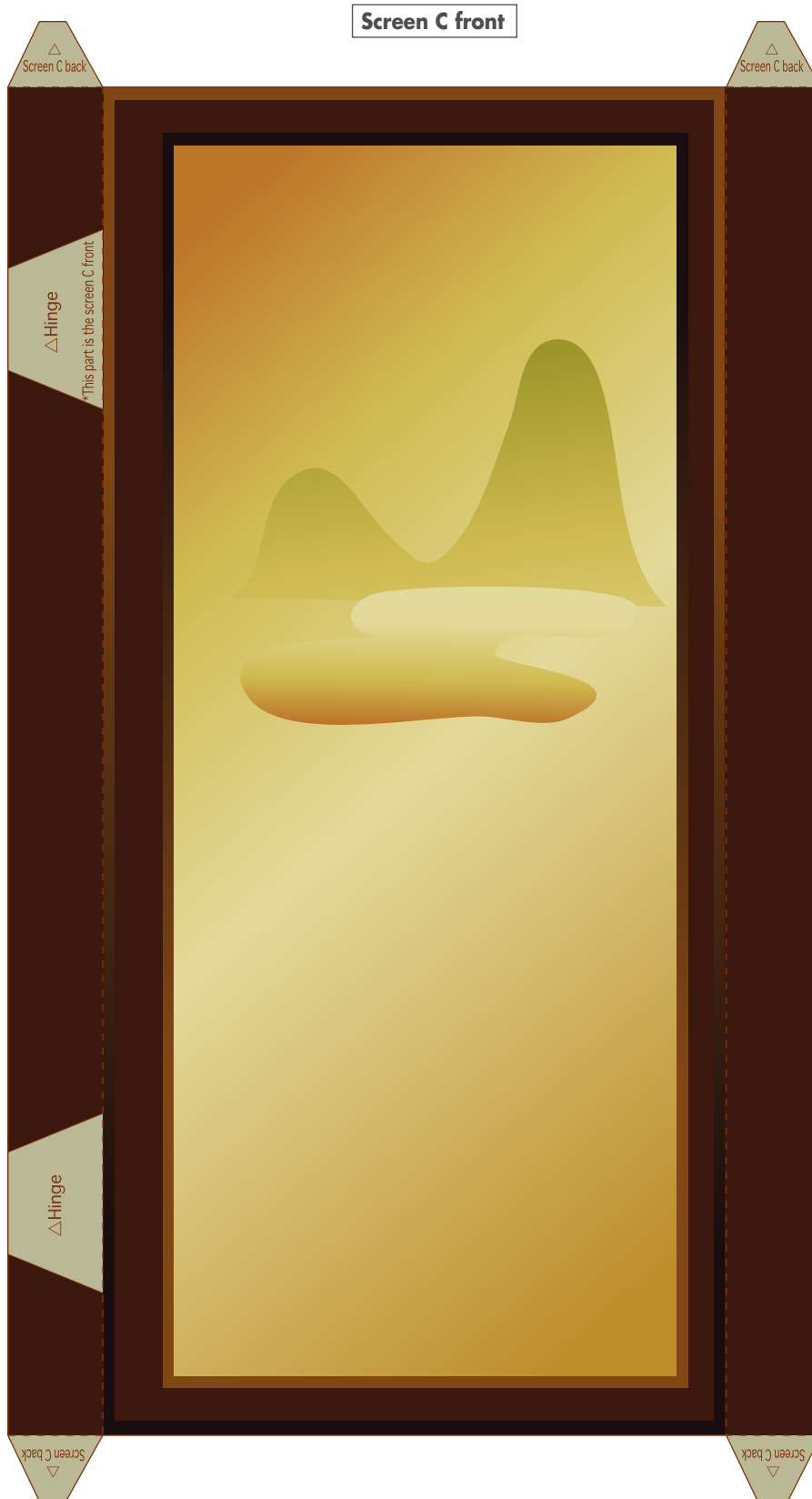
▽Screen A front

Screen A side × 2



Screen B front

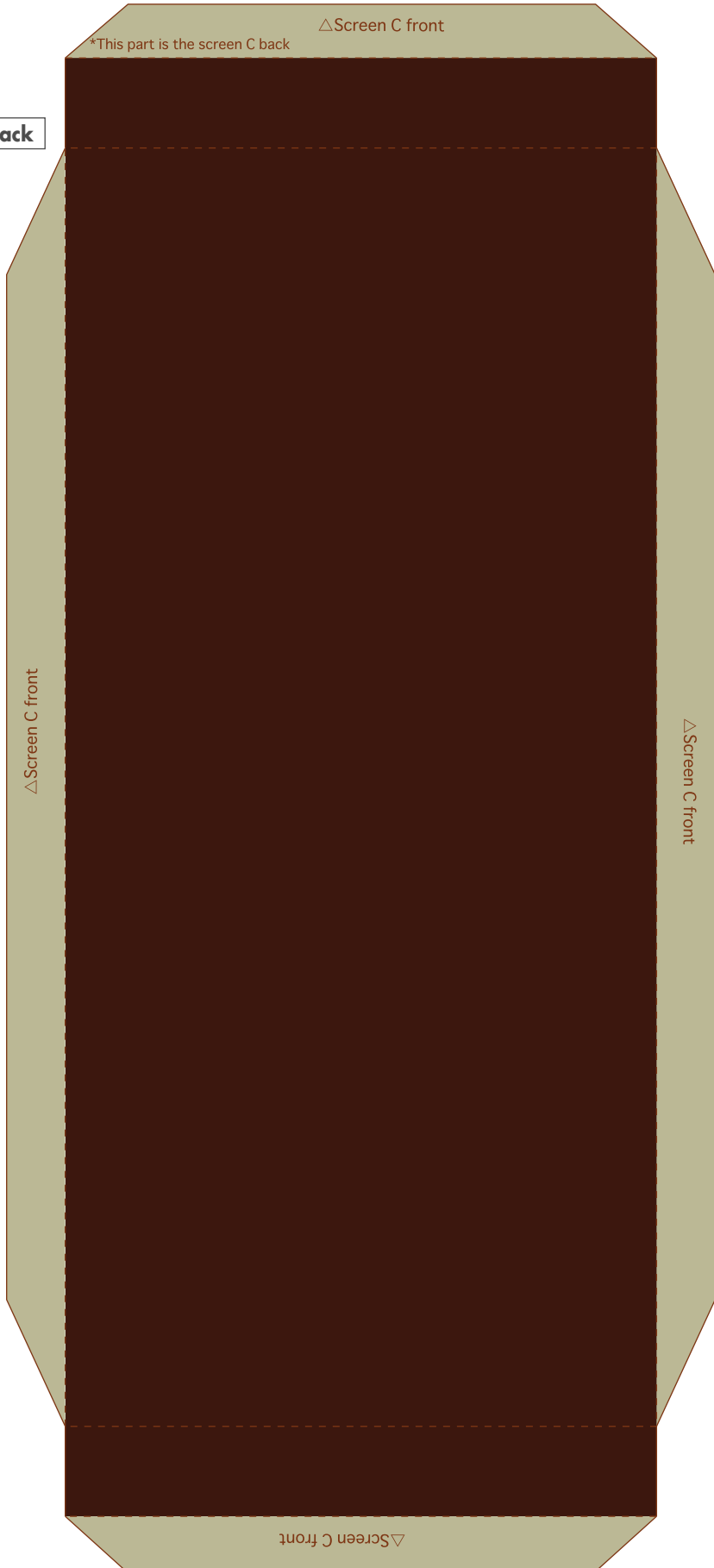




Screen B back



Screen C back



Hinge × 4

