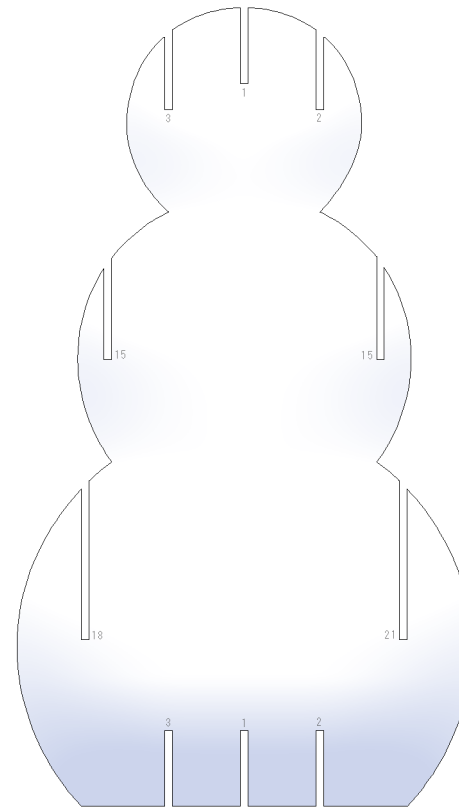
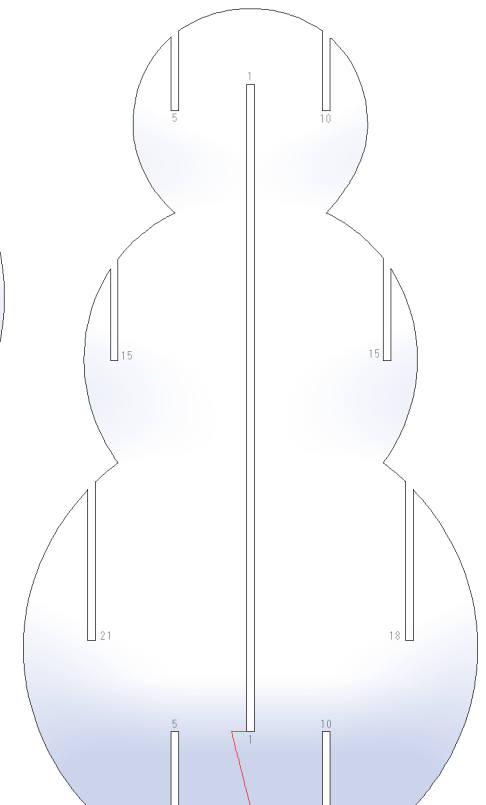




● Part A



● Part B



Assembly Instructions

- | | |
|--|--|
| Mountain fold (dotted line) *Make a mountain fold. | —— Scissors line (solid line) *Cut along the line. |
| - · - · - Valley fold (dashed and dotted line) *Make a valley fold. | — Cut in line (solid line) *Make a cut. |
| ▲ Black triangle Glue here | △ White triangle Glue the back |

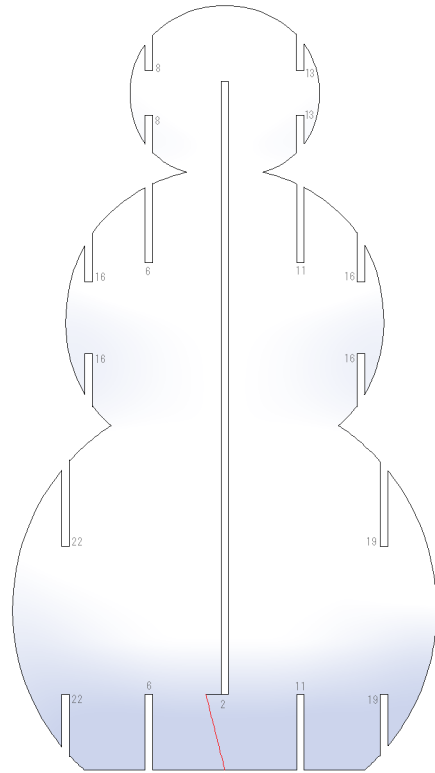


scissors, paste, a used ballpoint pen (tracing along the fold lines makes them easier to fold)

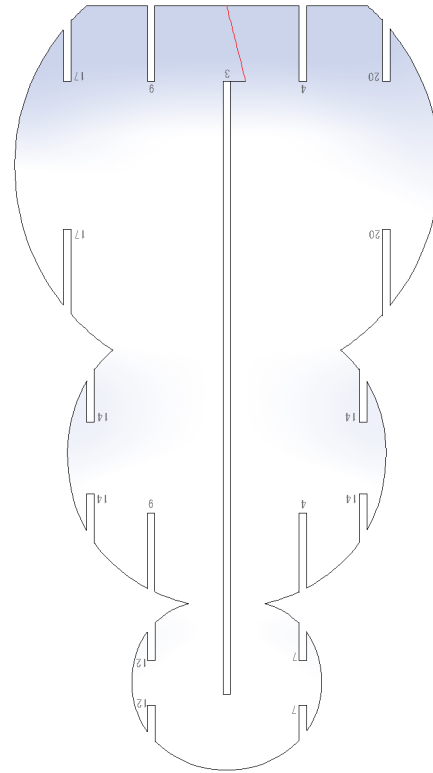


Caution:Glue, scissors, and other tools may be dangerous to young children so be sure to keep them out of the reach of young children.

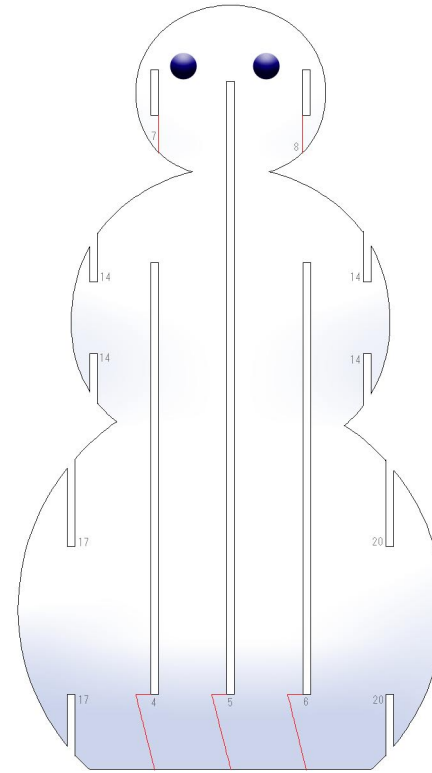
● Part C



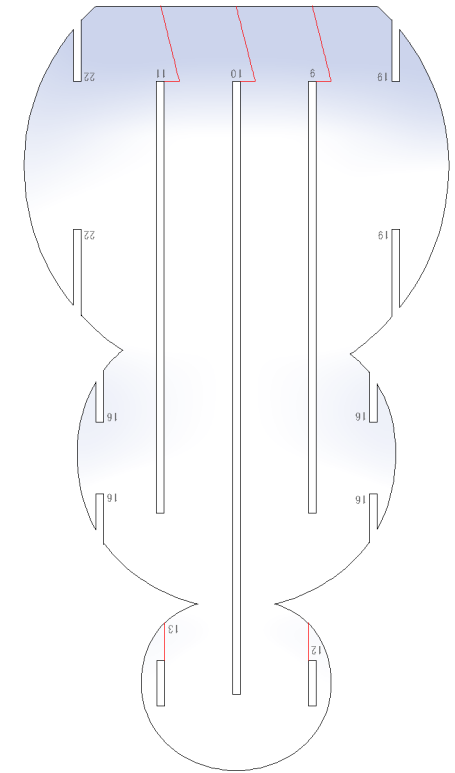
● Part D



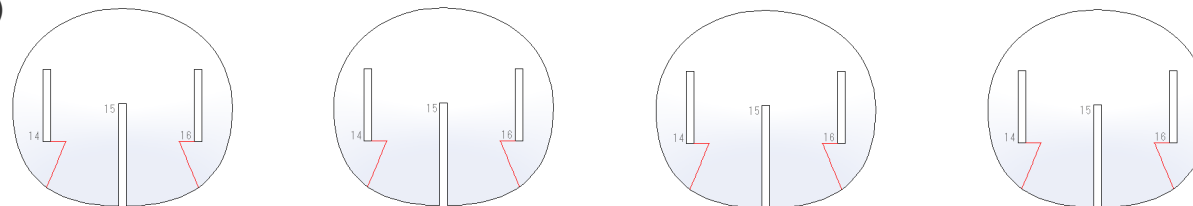
● Part E



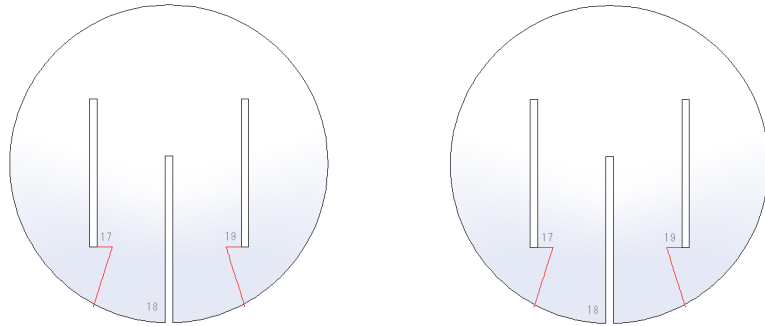
● Part F



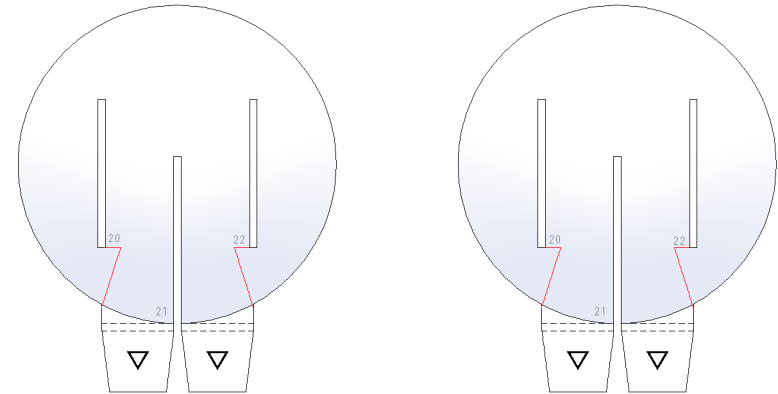
● Part G (4 pieces)



● Part H (2 pieces)



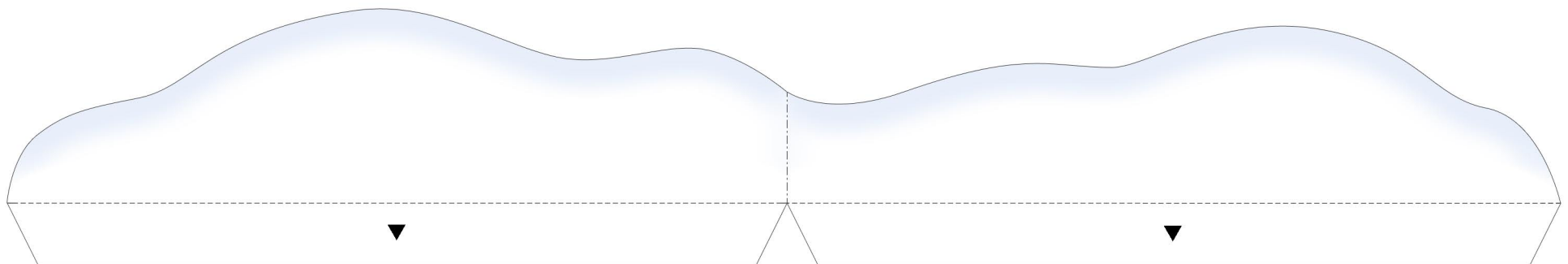
● Part I (2 pieces)



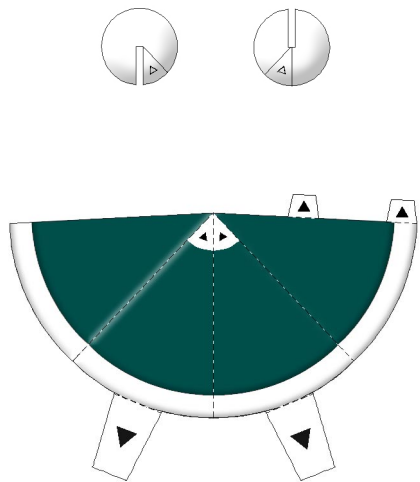
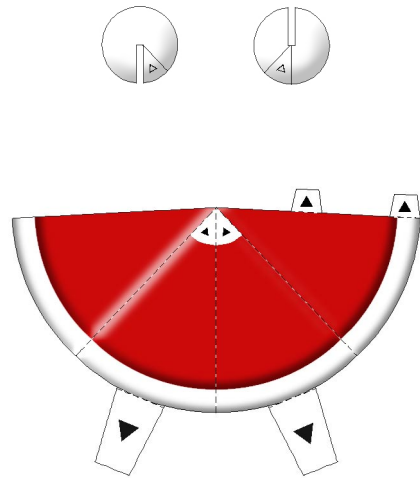
● Part J (2 pieces)



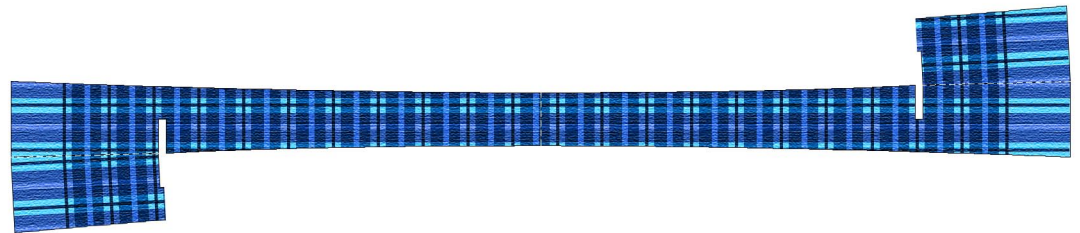
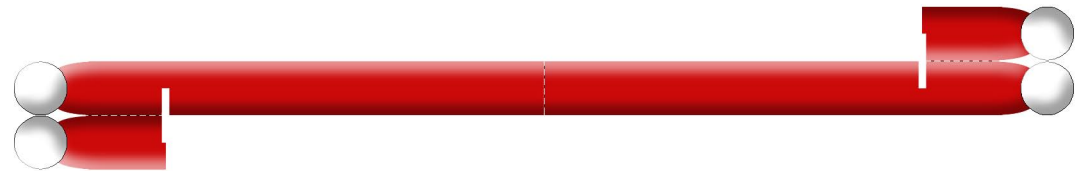
● Snowy mountain



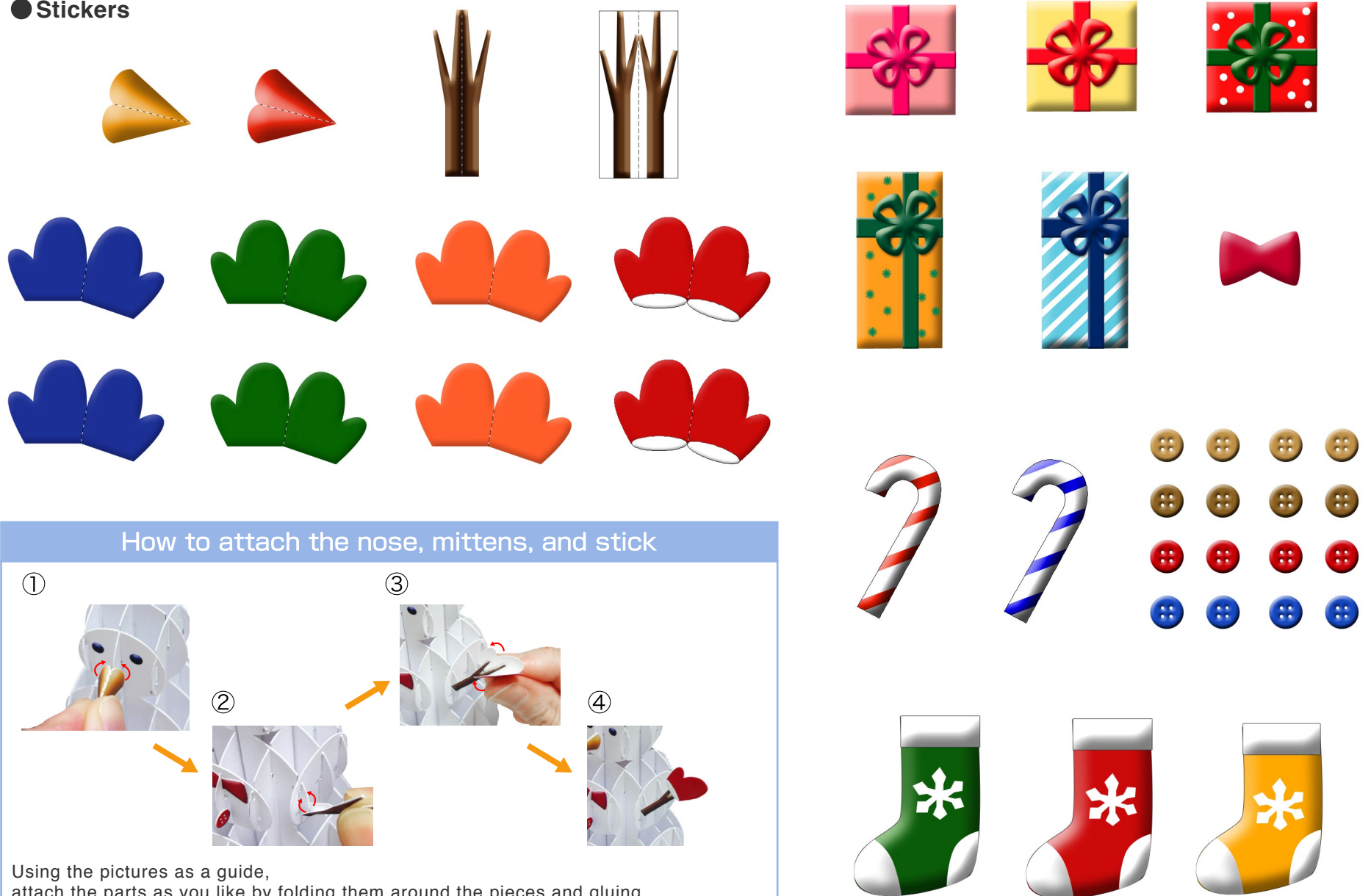
● Hat



● Scarf



● Stickers

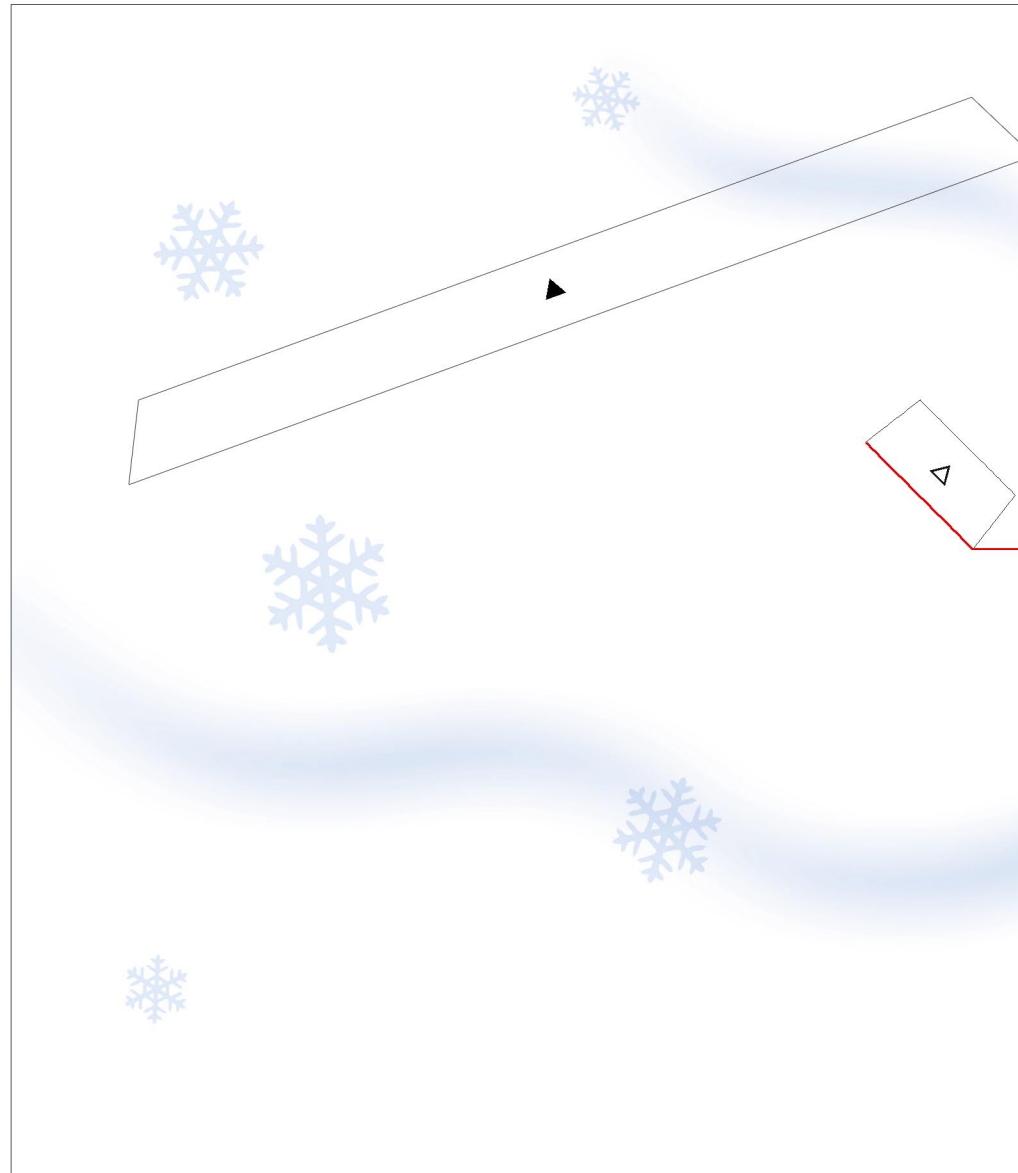


How to attach the nose, mittens, and stick

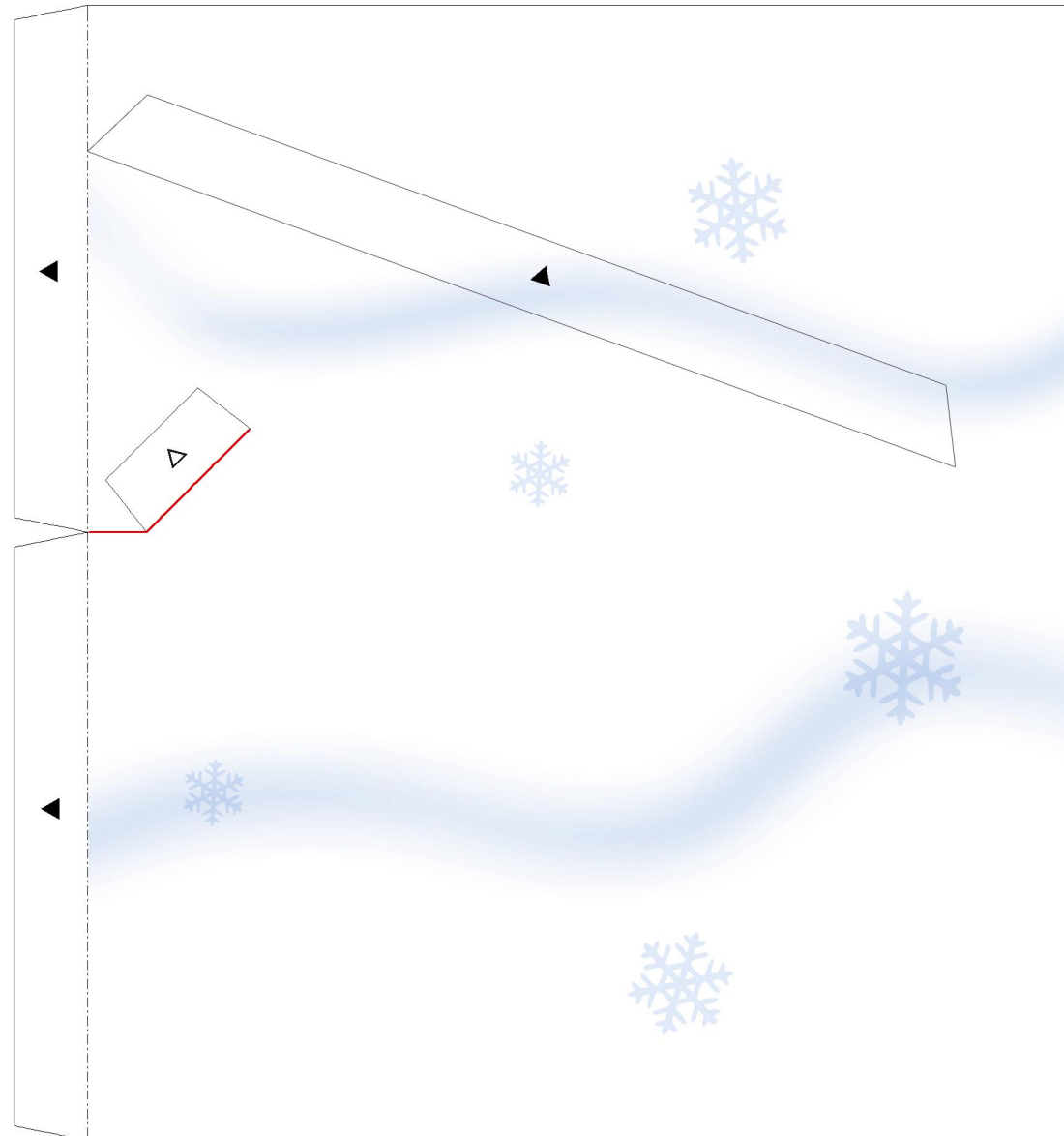
① Attaching the nose to the snowman's face.
 ② Attaching the mittens to the snowman's hands.
 ③ Attaching the stick to the snowman's chest.
 ④ The completed snowman face with all accessories attached.

Using the pictures as a guide, attach the parts as you like by folding them around the pieces and gluing.

● Base



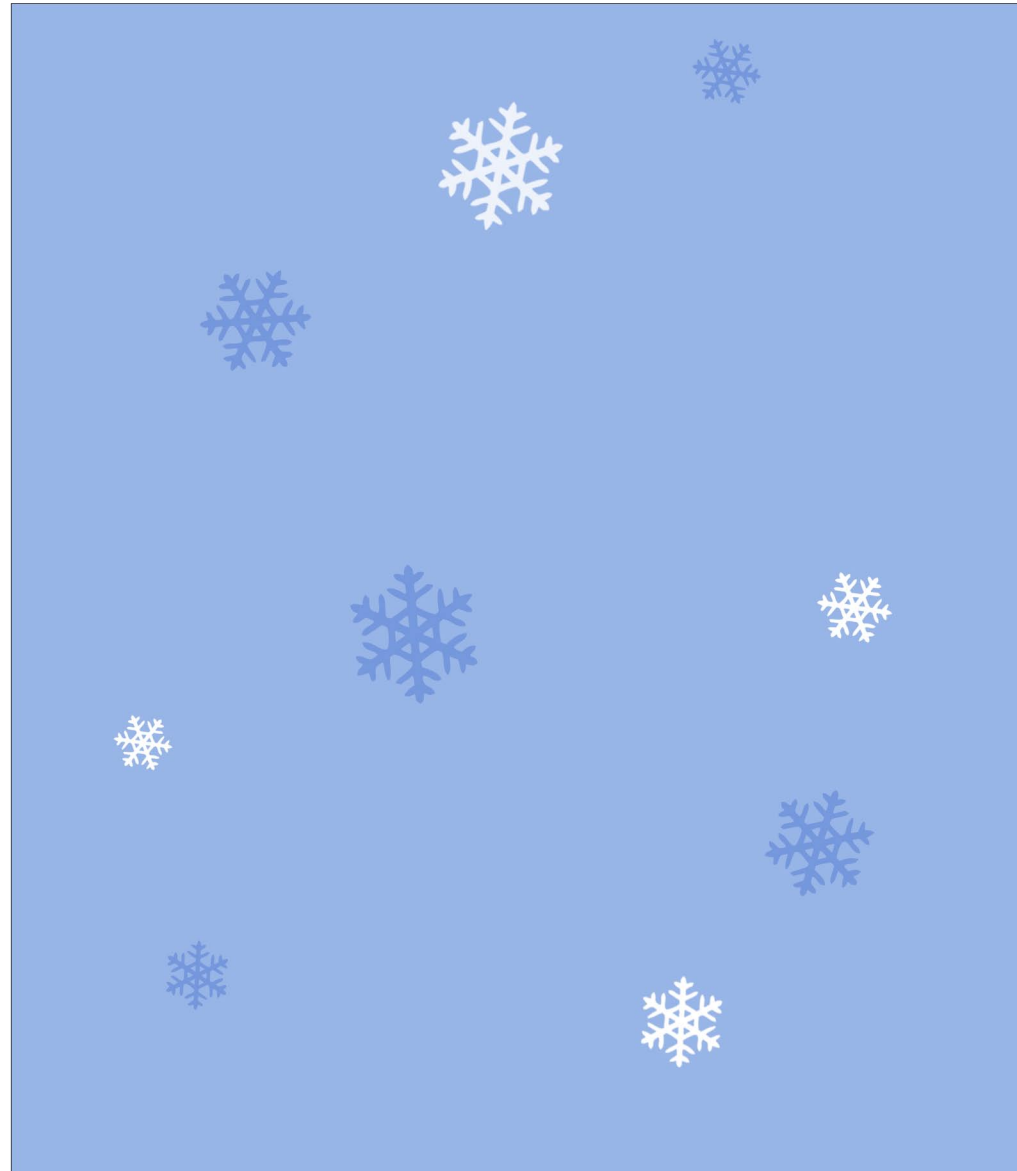
● Base



● Front cover



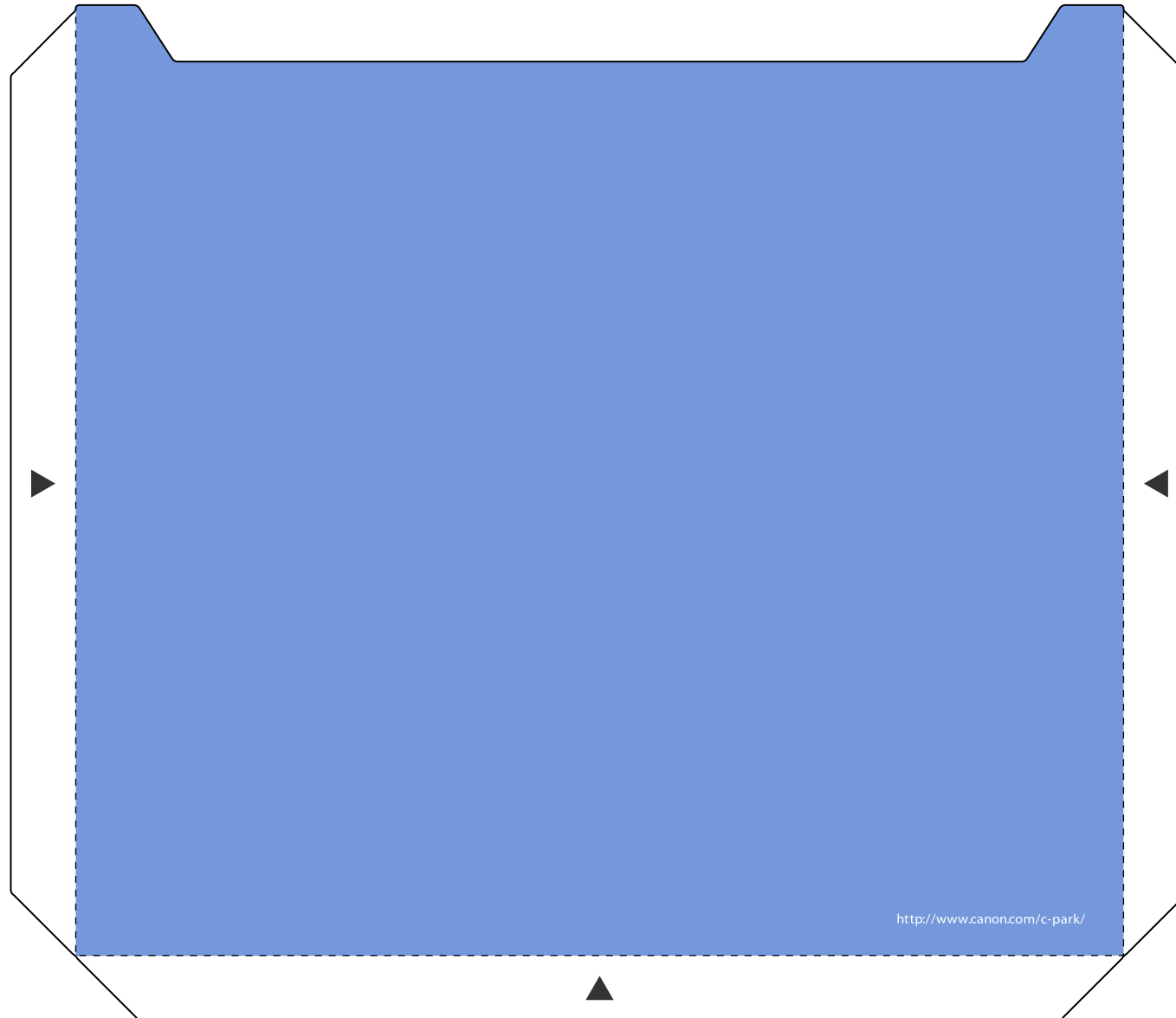
● Front cover (Plain)



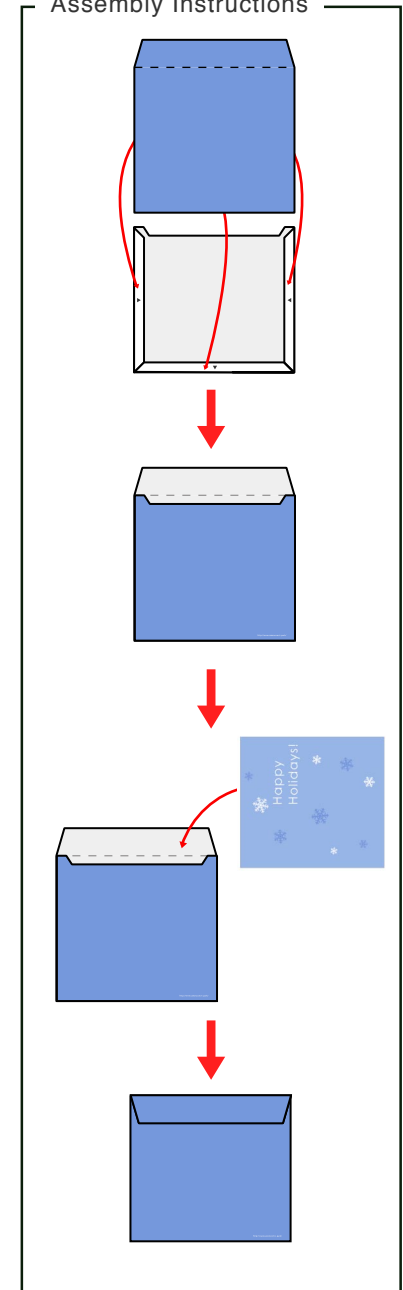
● Back cover



● Envelope



Assembly Instructions



● Envelope

