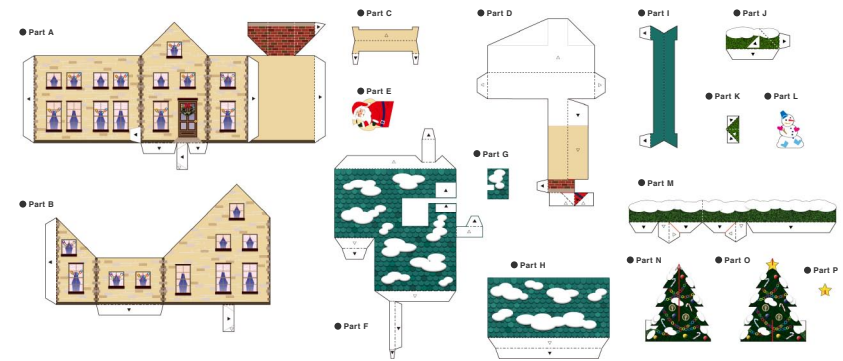
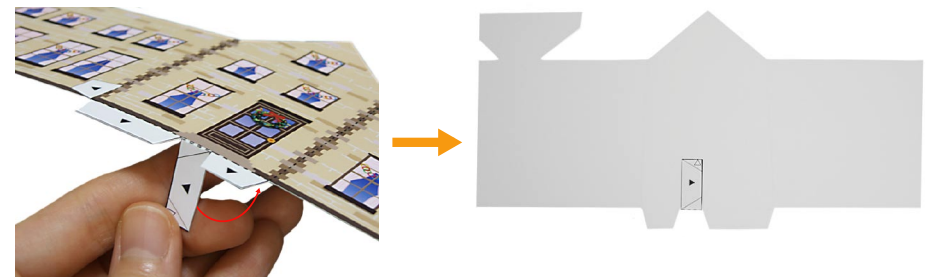




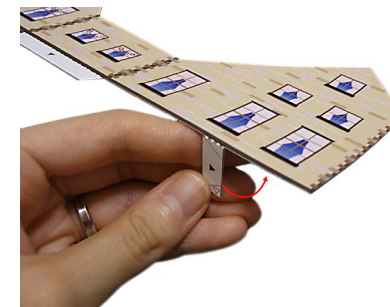
1 Cut out the parts and fold them along the fold lines on each.



2 Fold back the longest glue tab on the bottom edge of part A, and glue it to the reverse side.



3 For part B also, fold back the longest glue tab on the bottom edge and glue it to the reverse side.



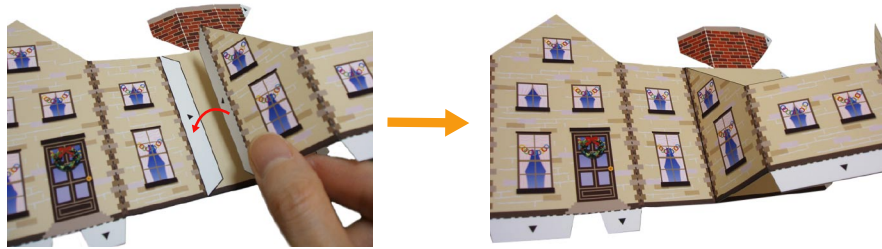
Assembly Instructions

<p>..... Mountain fold(dotted line) *Make a mountain fold.</p> <p>- - - - - Valley fold (dashed and dotted line) *Make a valley fold.</p> <p>▲ Black triangle Glue here</p>	<p>———— Scissors line(solid line) *Cut along the line.</p> <p>— — — Cut in line(solid line) *Make a cut.</p> <p>△ White triangle Glue the back</p>
--	---

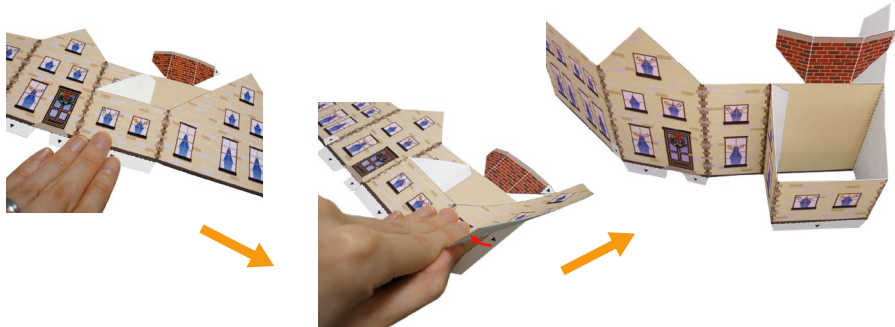
You will need
scissors, paste, a used ballpoint pen (tracing along the fold lines makes them easier to fold)

Caution: Glue, scissors, and other tools may be dangerous to young children so be sure to keep them out of the reach of young children.

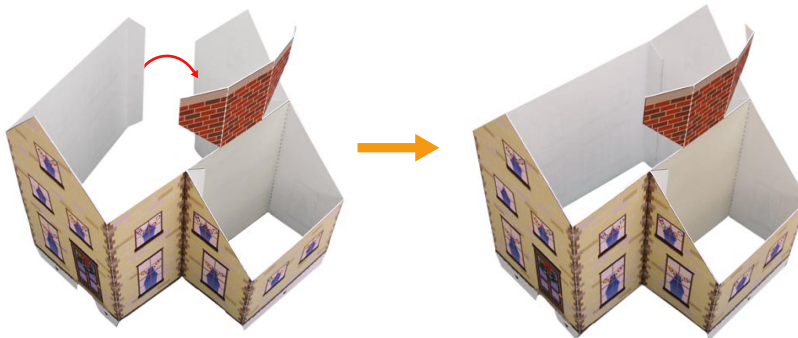
4 As shown in the picture, attach the left glue tab on part B to the wall glue tab on part A.



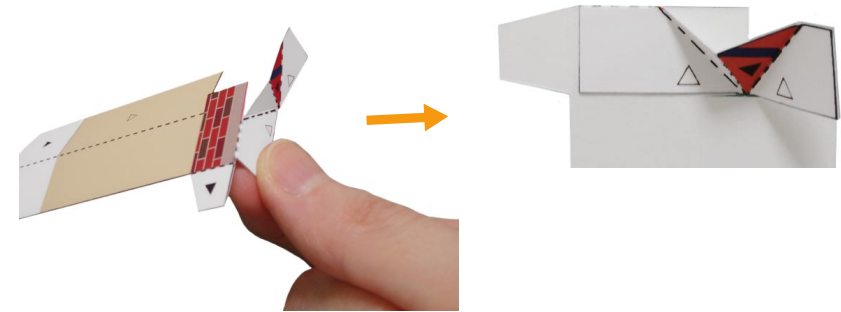
5 Fold up the parts you glued together in 4 as shown in the picture, while attaching the right glue tab on part A to the back of part B.



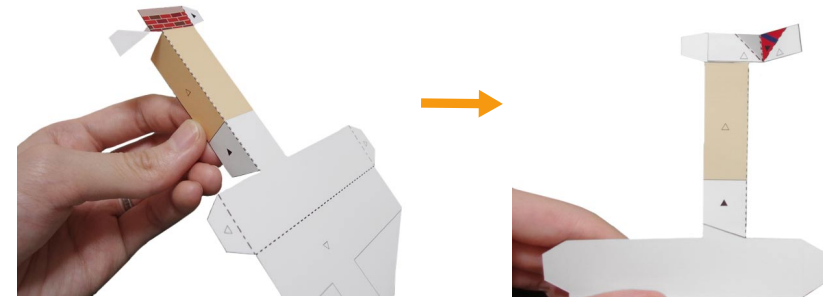
6 Connect the part you made in 5 together at the glue tabs.



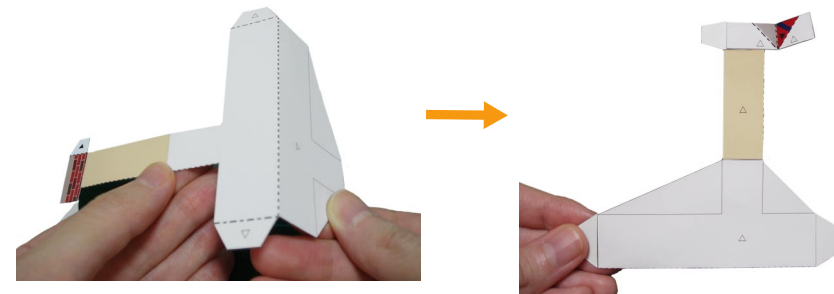
7 Fold back the top part of part D along the fold line, and glue it to the reverse side.



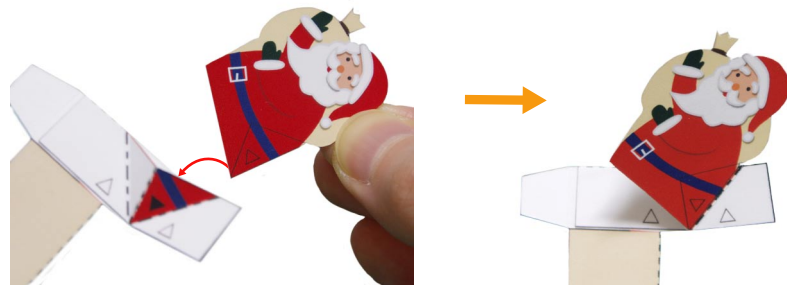
8 Fold back the vertical piece along the fold line, and glue it to the reverse side.



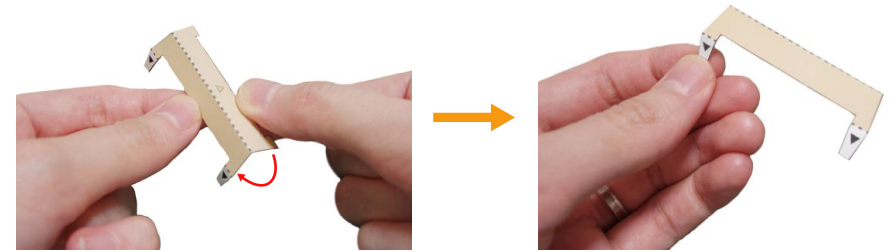
9 Fold back the glue tab at the bottom of the piece you made in 8 along the fold line, and glue it to the reverse side.



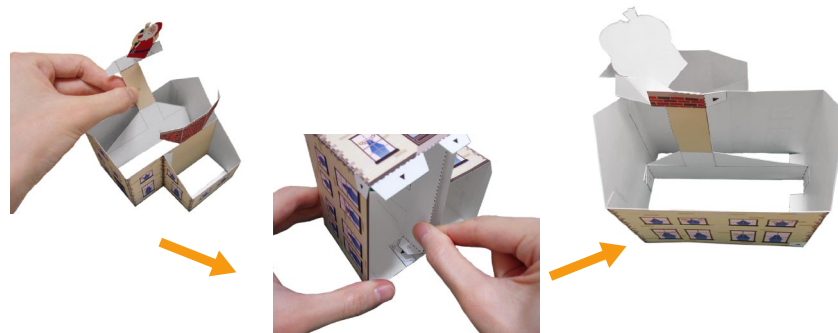
10 Attach part E.



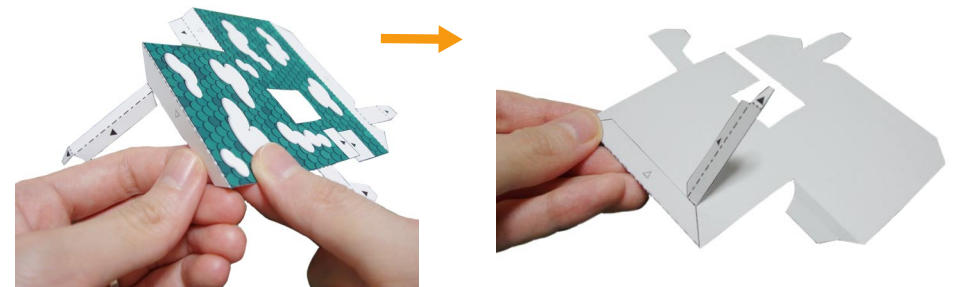
13 Fold part C down the middle and glue together at the back.



11 Insert the piece you made in 9 into the piece you made in 6, in line with the position of the chimney on 6. Then glue 9 to the glue tabs on the bottom inside of 6.



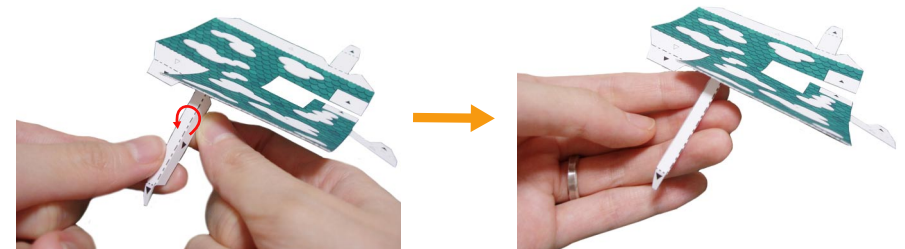
14 Fold back the horizontal glue tab at the bottom of part F (marked △) and glue it to the reverse side.



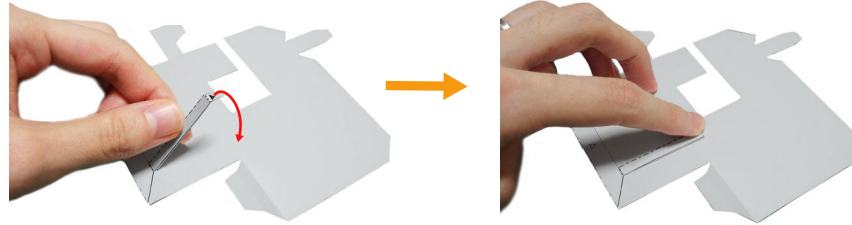
12 Join the chimney together at the glue tabs.



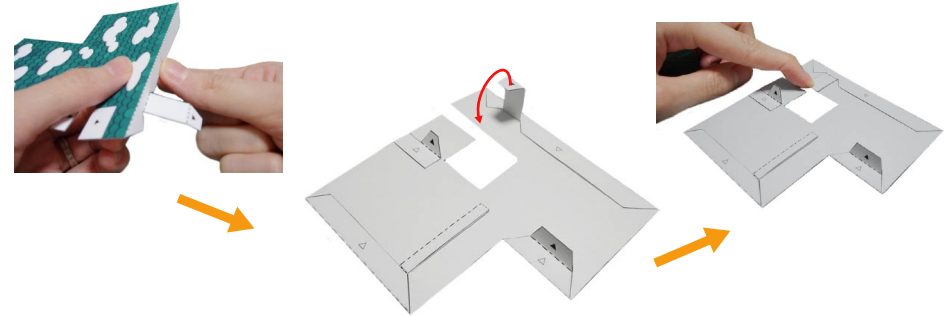
15 At the fold line, fold back the vertical glue tab at the bottom of the piece you made in 14, and glue it to the reverse side.



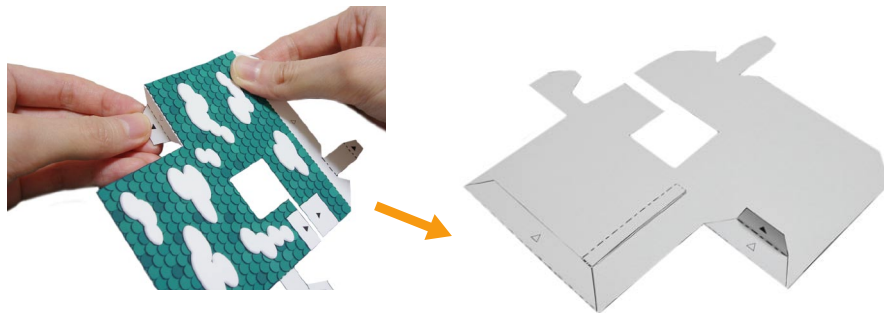
16 Glue the glue tab on the piece you made in 15 to the reverse side of part F.



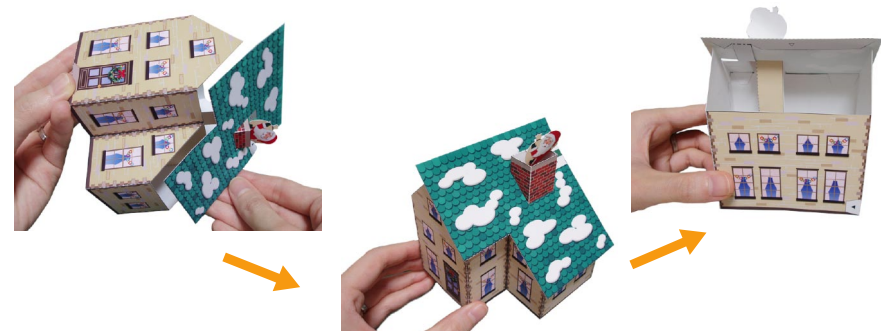
19 Fold back the top glue tab (marked \triangle) on part F at the fold line, and glue it to the reverse side. Then attach the glue tab on the vertical piece to the back of part F.



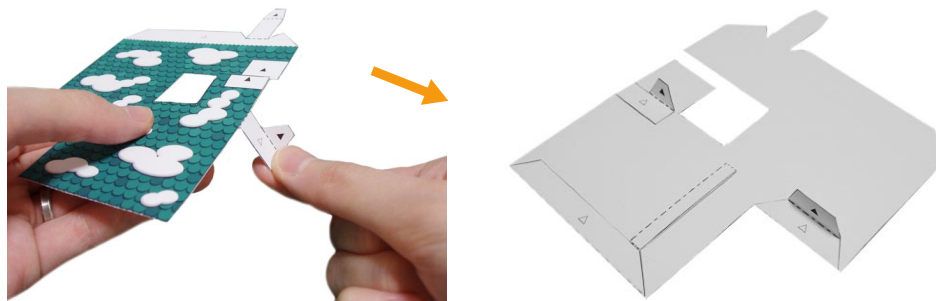
17 Fold back the left glue tab (marked \triangle) on part F at the fold line, and glue it to the reverse side.



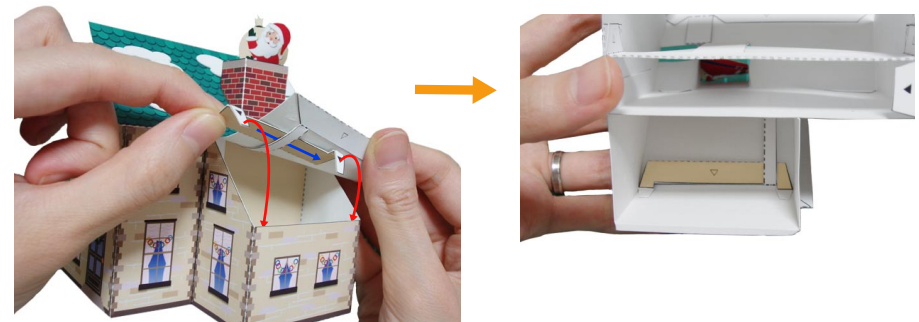
20 Insert the chimney you made in 12 through the hole in part F, and secure it by gluing at the left and right glue tabs on part F.



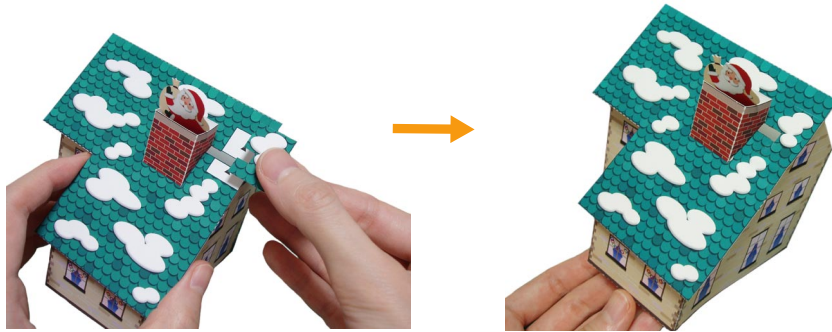
18 Fold back the right glue tab (marked \triangle) on part F at the fold line, and glue it to the reverse side.



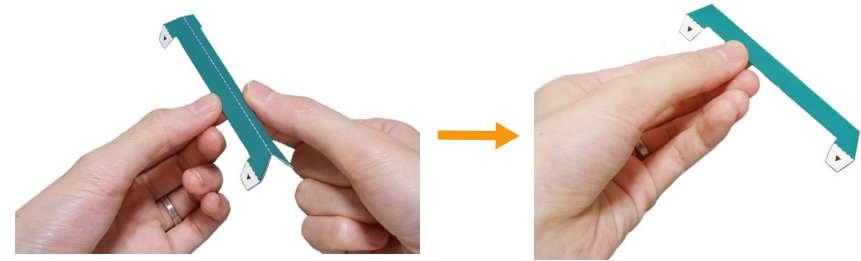
21 Pass the part you made in 13 through the vertical strip on the back bottom edge of part F as shown in the photo, and secure it to the glue tabs on the back of the wall.



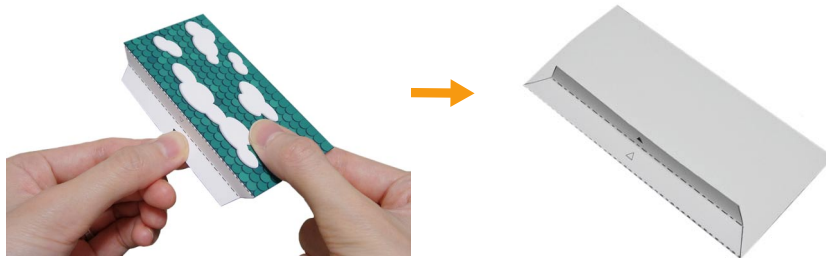
22 Attach part G to the roof.



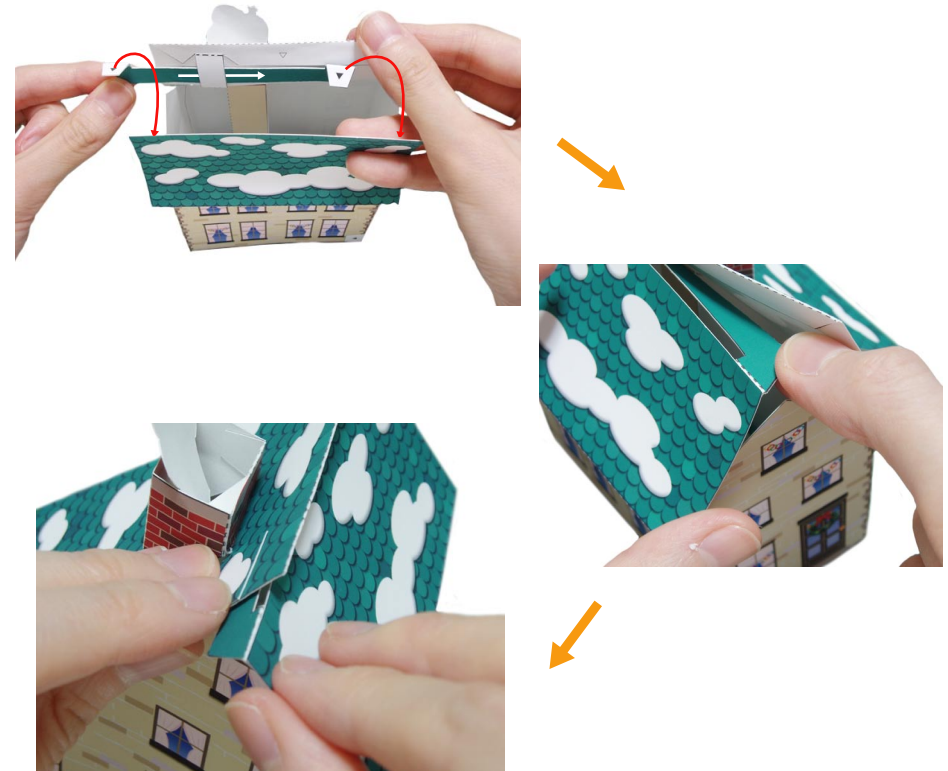
25 Fold part I down the middle and glue together at the back.



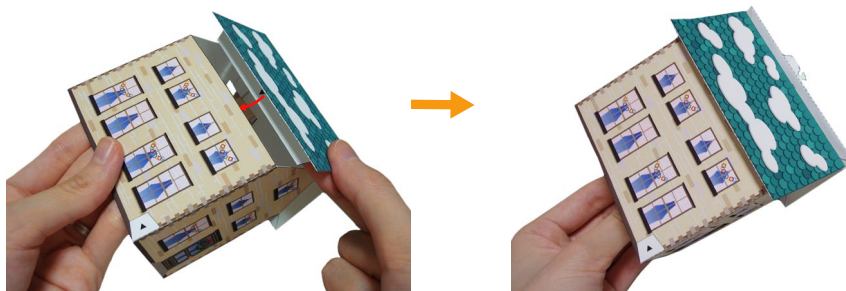
23 Fold back the bottom glue tab on part H (marked \triangle) and glue it to the reverse side.



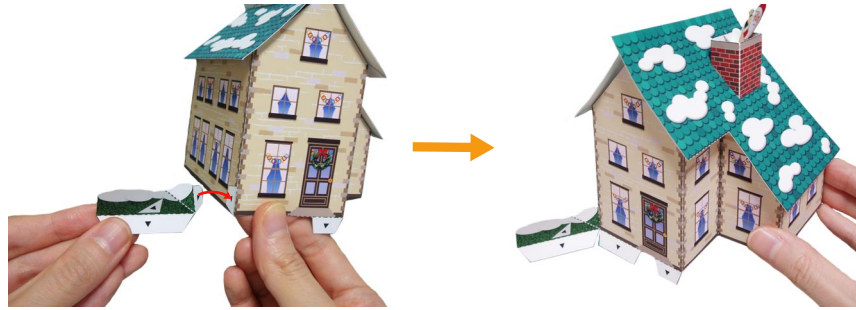
26 Pass the piece you made in 25 through the vertical strip on the top back edge of part F as shown in the photo, and secure its glue tabs to the reverse side of the roof.



24 As shown in the picture, attach the piece you made in 23 to the reverse side of the wall.



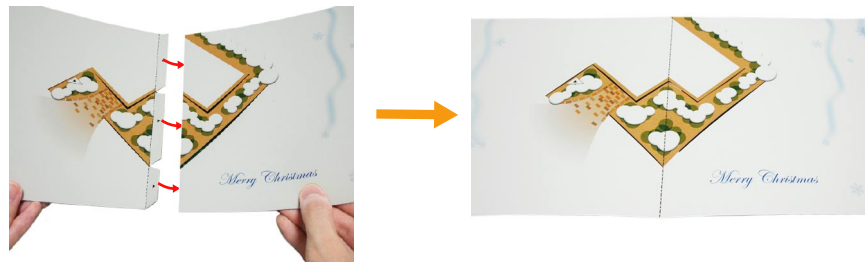
27 Attach the right glue tab on part J to the glue tab at the back left corner of the house.



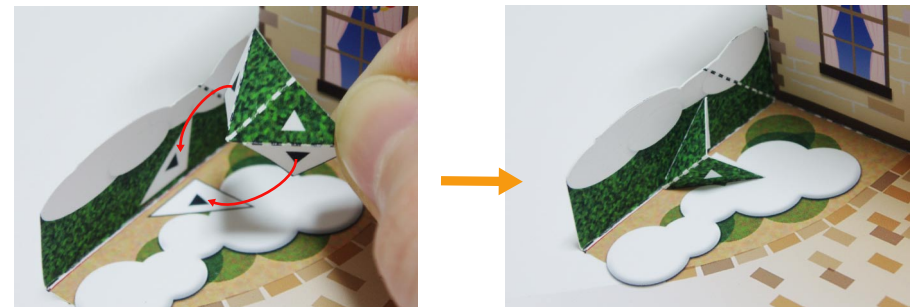
30 After gluing, carefully fold it up and open and close the card a few times to check the mechanism.



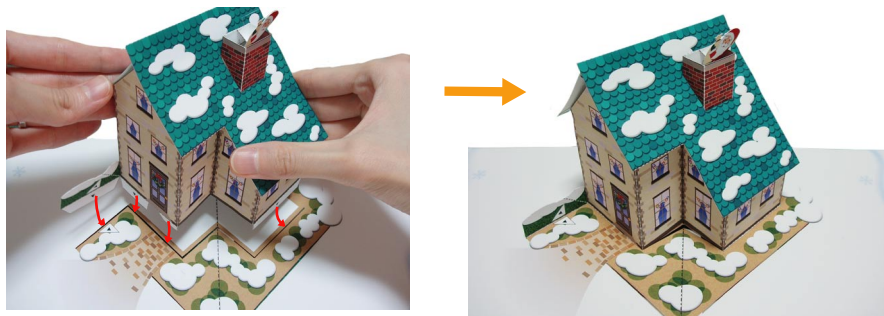
28 Join the left and right sides of the base together at the glue tabs.



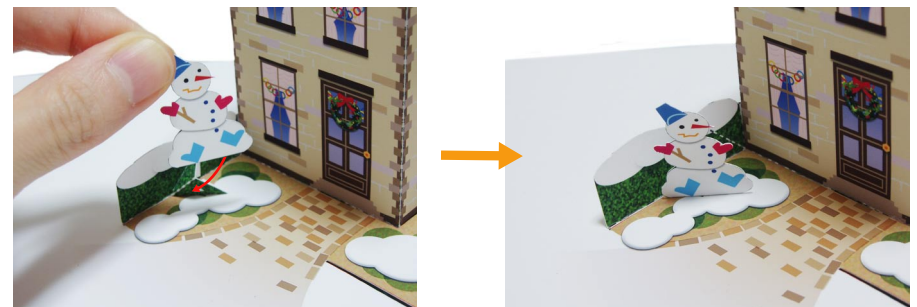
31 Attach the glue tabs on part K to part J and the base, at the glue spots.



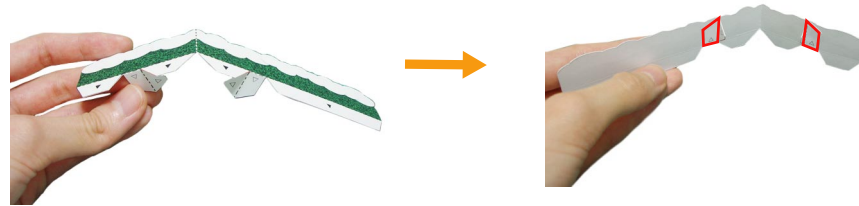
29 Attach the glue tabs on the piece you made in 27 to the base, slotting it onto the slit at the back.



32 Attach part L to part K.



33 Fold back the second glue tab from the left and right on the bottom of part M, and glue them to the reverse side (the parts in the photo only).



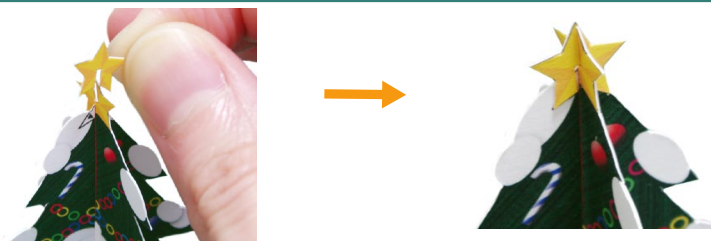
34 Attach the left glue tab on part M to the left glue tab on the back of part N.



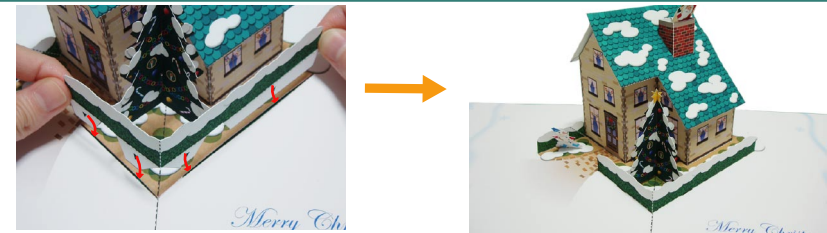
35 Fit part O to the slot on part N, and attach the right glue tab on part M to the back of the right side of part O.



36 Fit part P to the top of part N, parallel to part N, and attach it at the back, to the glue spot on part N.



37 Insert the bottom glue tabs of the part you made in 36 through the slits on the base, and attach them to the reverse side.



38 After gluing, carefully fold it up and open and close the card a few times to check the mechanism.



39 Glue the cover with the writing on it to the left half of the base.



40 39 is the completed card when the cover is stuck on to the other half side.

