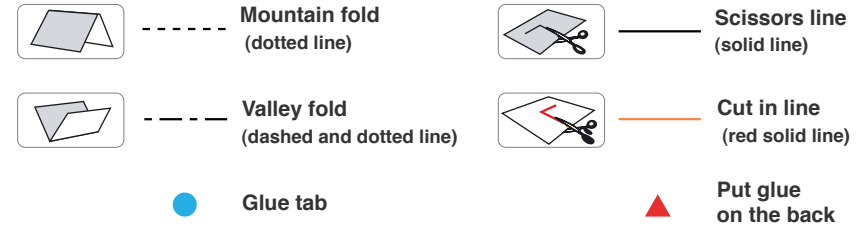


Ukiyo-e is the name for a style of Japanese woodblock prints that originated in the Edo period (1603-1868) depicting scenes of daily life. "The Actor Otani Oniji III as Yakko Edobei" is based on a kabuki play which was held in Japan in 1794. The piece captures the moment from the play when the villain is about to attack, as can be seen from his hands, ready to attack, and the look of hatred on his face. The artist, Toshusai Sharaku, only practiced the art of ukiyo-e for ten months, but even today is one of the most popular ukiyo-e masters.

Pattern: A4 size, 6 sheets / Number of pieces: 27

Notation Key

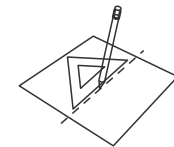


Necessary utensils

Scissors, Tweezers, A set square, glue, a used ball-point pen, Metal rod (used to curl paper).

Special hints for an attractive finish

- Use the included sketch as a reference and compare your work to it as you go.
- Marking numbers on the back of each part as you cut them out will help to keep track of them.
- Take your time to cut out each piece carefully. Be sure to cut slots in advance too.
- Make creases on the fold lines of the parts you have cut out, before gluing them. (Use a used ball-point pen to score the fold lines.)
- For parts that require curling, be sure to use a metal rod to curl them in advance.



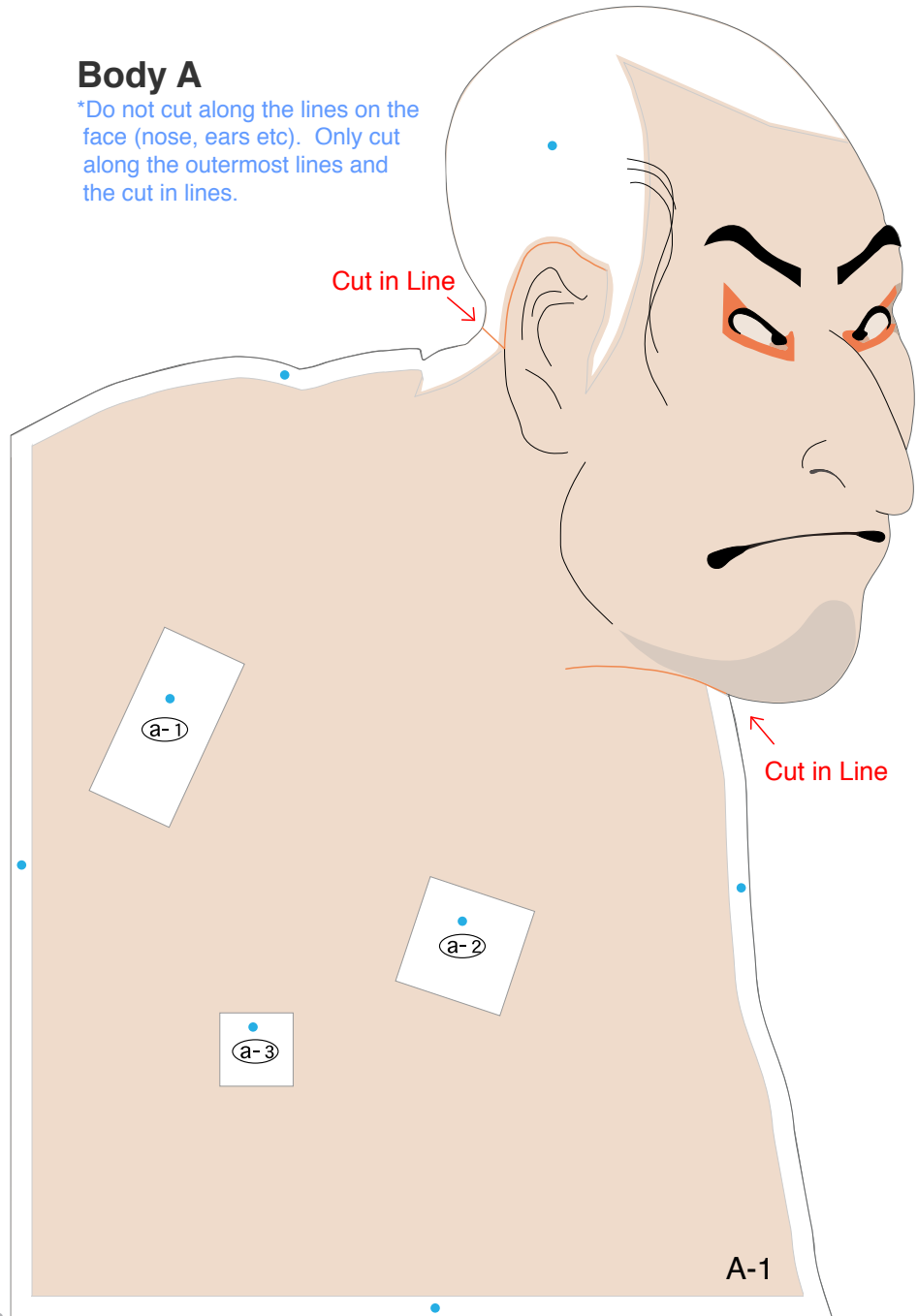
caution

*Read the Assembly Instructions carefully and assemble the craft in page order.

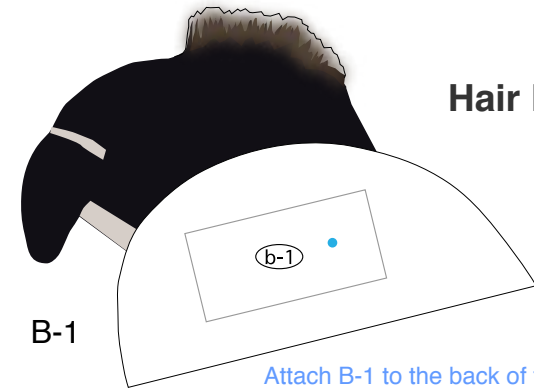
*This papercraft involves using glue, scissors, and other utensils and materials that may be dangerous to young children. Please work somewhere out of reach of young children.

Body A

*Do not cut along the lines on the face (nose, ears etc). Only cut along the outermost lines and the cut in lines.



Hair B



B-1

Attach B-1 to the back of the head

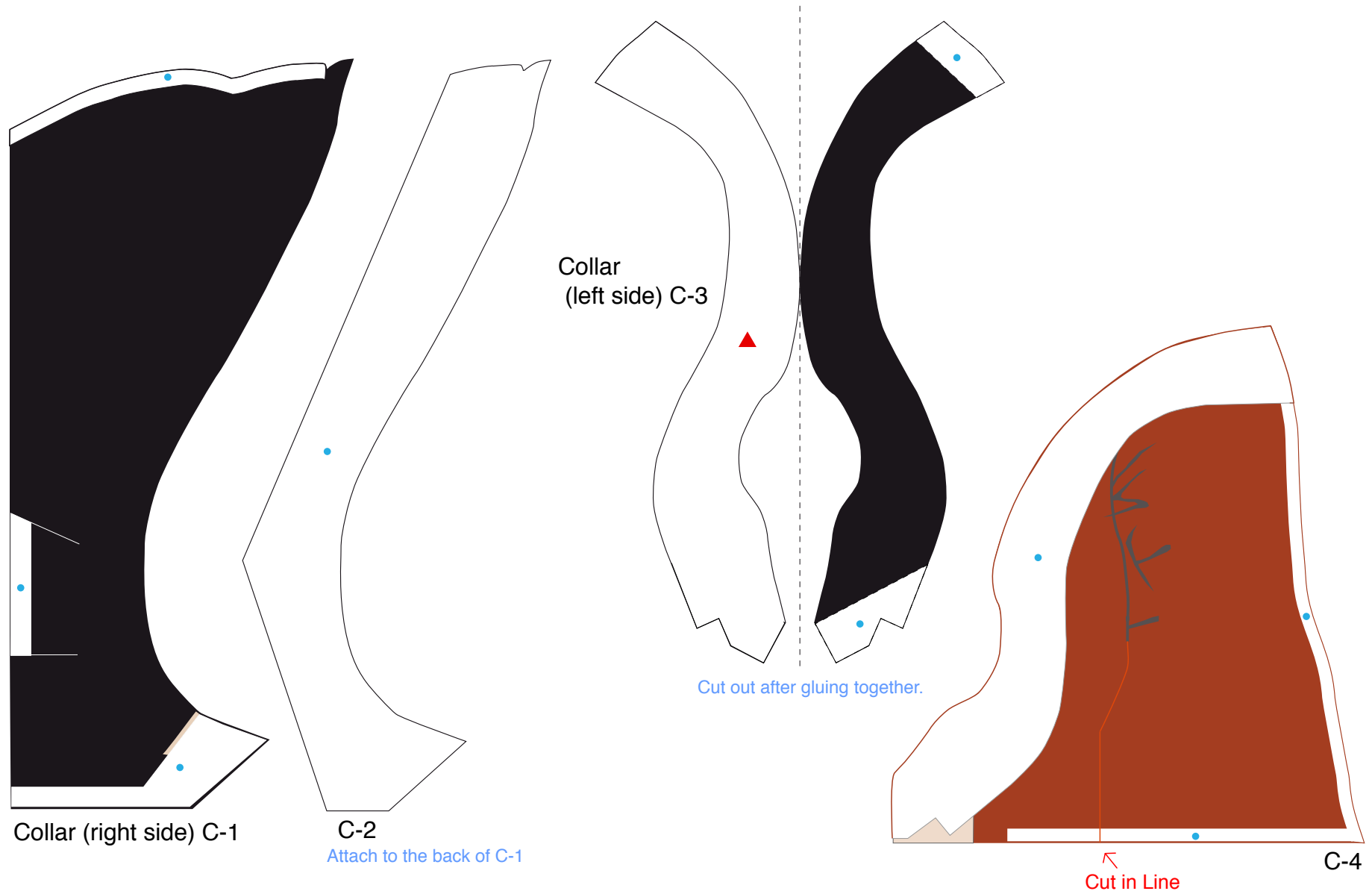


B-2

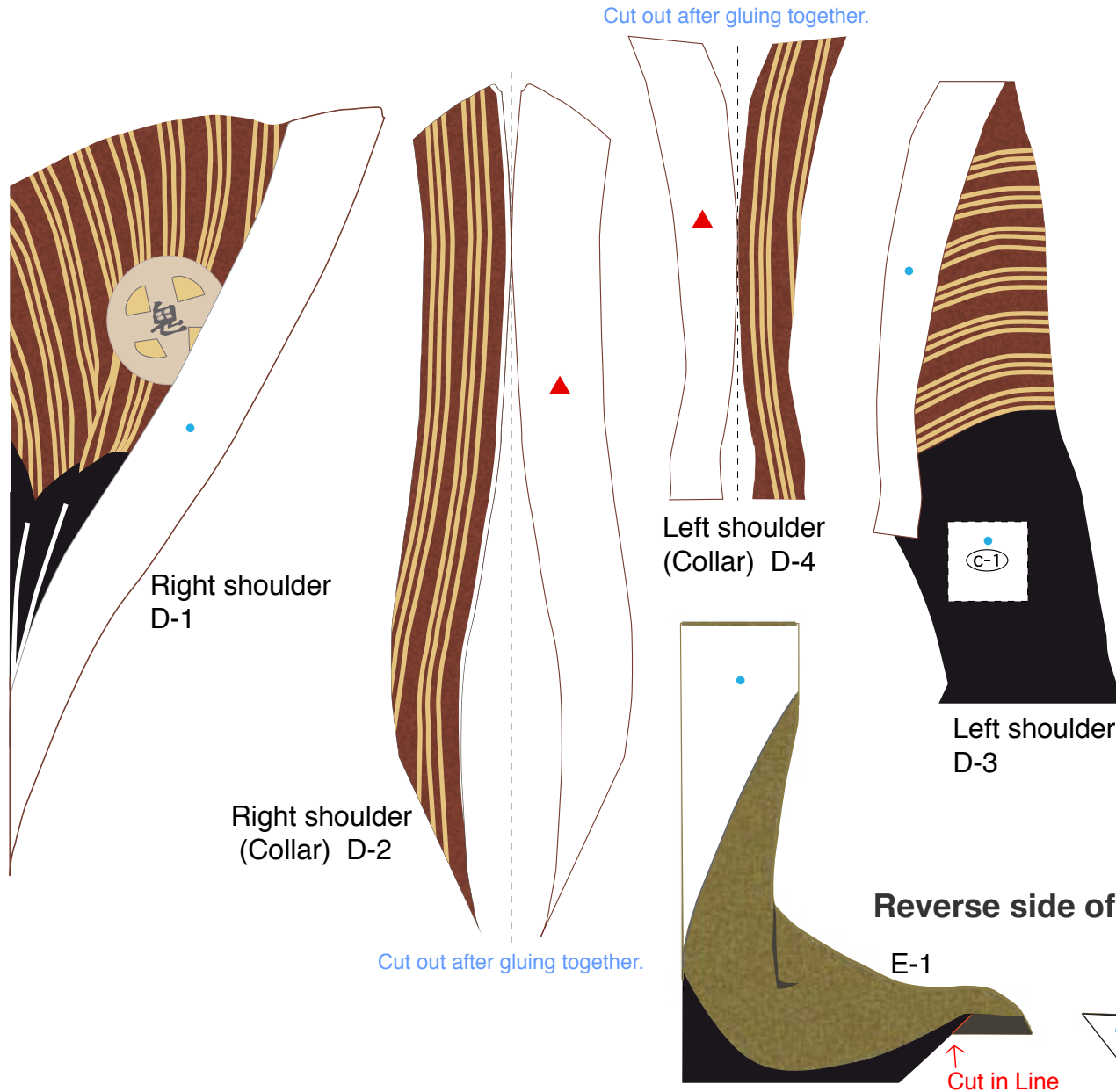


B-3

Undergarment C



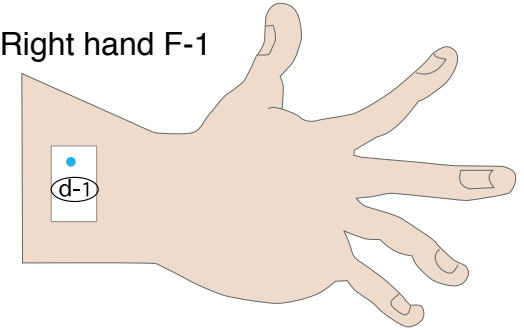
Kimono D



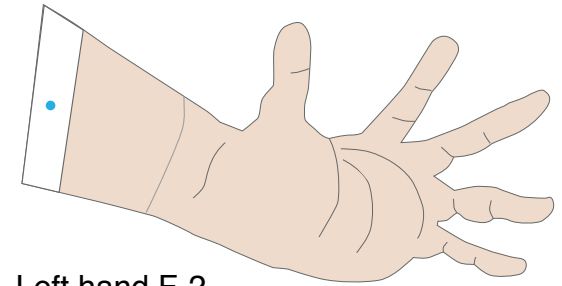
Hand F

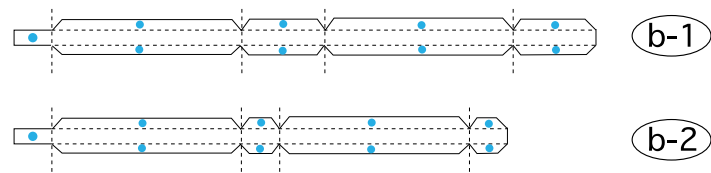
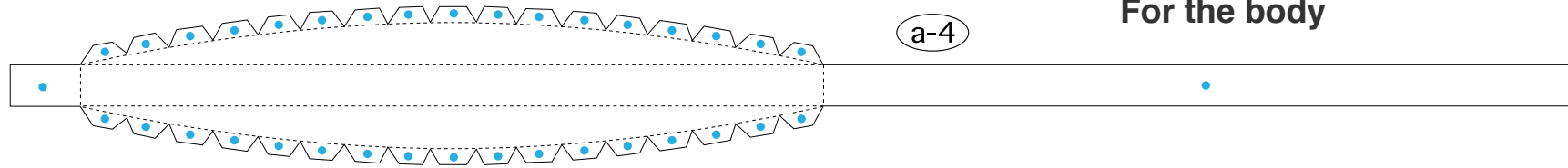
*Do not cut along the lines for the wrinkles on the hands, fingernails, etc. Only cut along the outermost lines.

Right hand F-1

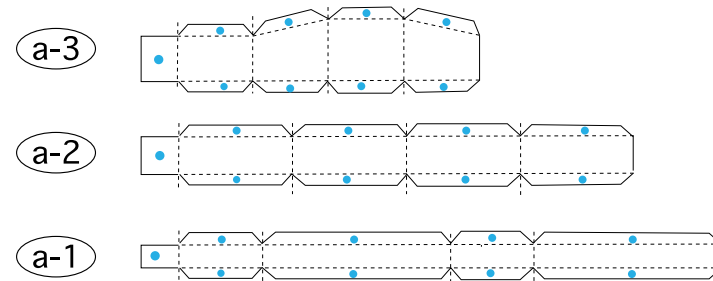


Left hand F-2

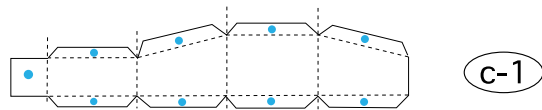




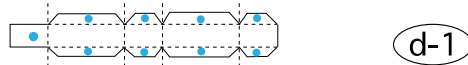
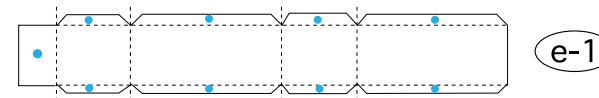
For the topknot



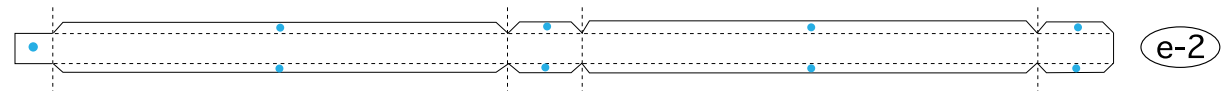
For the background



For the left shoulder of the kimono



For the right hand



Background G

