



MANEKI NEKO (Lucky cat)

Good luck charm

The Maneki-neko, or "beckoning cat", is a widely recognizable figure, beloved in Japan as a lucky cat that beckons good fortune. Most people in Japan use similar gestures to beckon someone over, by waving their hands up and down with their palms facing down.

There are various theories about the origin of the Maneki-neko and, even today, no one is certain as to which explanation is the correct one. The Maneki-neko is believed to have originated towards the end of the Edo Period (1603-1867) and eventually developed into the decorative ornament it is today. Folklore has it that the raised paw of the Maneki-neko has meaning.

Maneki-neko come in a variety of different colours. Black is said to be the 'colour of darkness', so the black Maneki-neko is believed to ward off evil and misfortune.

Also, the Maneki-neko with its left paw raised is generally believed to be 'beckoning to people', to invite them in, and the black Maneki-neko with its left paw raised is said to 'protect against the trouble that people bring', and is apparently most effective when placed near the front door.



★ Assembly Instructions

- 1) Carefully cut out the parts.
- 2) Make mountain folds and valley folds along the dotted lines, as indicated by the directions.
- 3) Assemble the parts in the order shown by the numbers on the glue tabs. (Read the Explanation of Symbols for more information.)
- 4) Attach the parts in order. (Read the Explanation of Symbols for more information.)
- 5) Your Paper craft model is finished!

★ Tools

Scissors, glue (We recommend craft glue.)

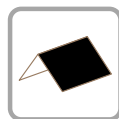
★ Caution

Keep glue away from small children.
Be careful not to cut your fingers when using scissors.
Fold the folding lines before gluing.

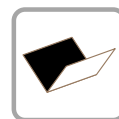
★ Explanation of Symbols.



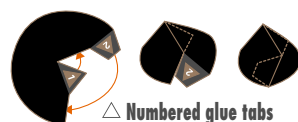
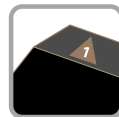
————— Cut line



- - - Mountain fold



- - - Valley fold



△ **Numbered glue tabs**
Glue the parts together in the order indicated by the numbers.



Arrows (⇔)

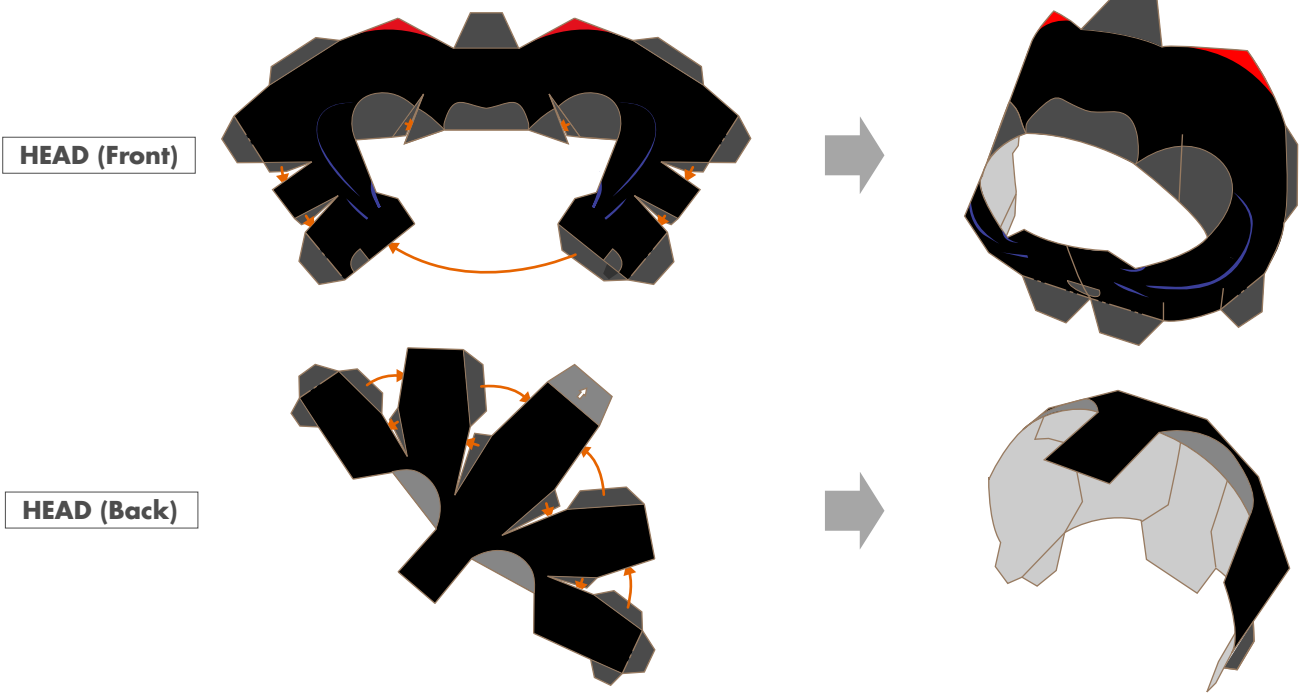
Do not glue these areas. Insert the part into its mating part, in the direction indicated by the arrow.



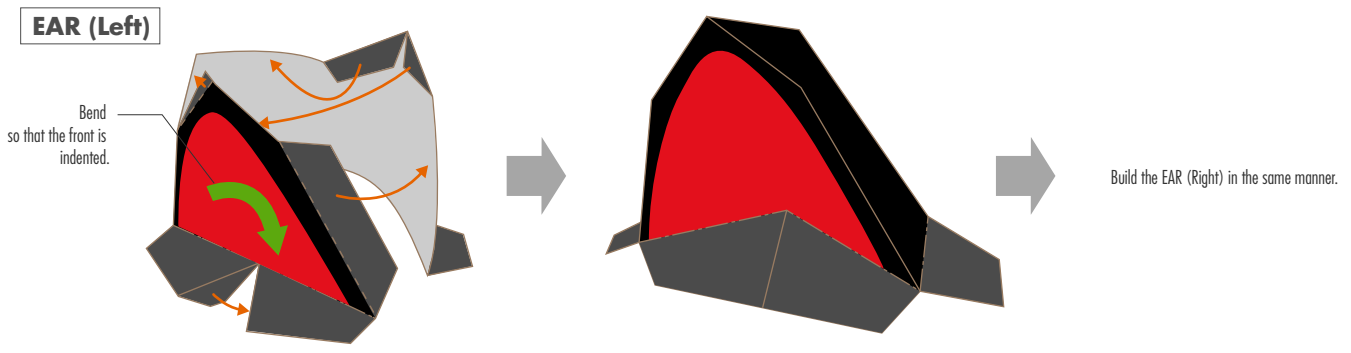
△ **Glue tabs with symbols and part names.**
These tabs are to be glued onto the matching parts, which name is indicated on the tab.

★ Build the HEAD, EAR and EYES

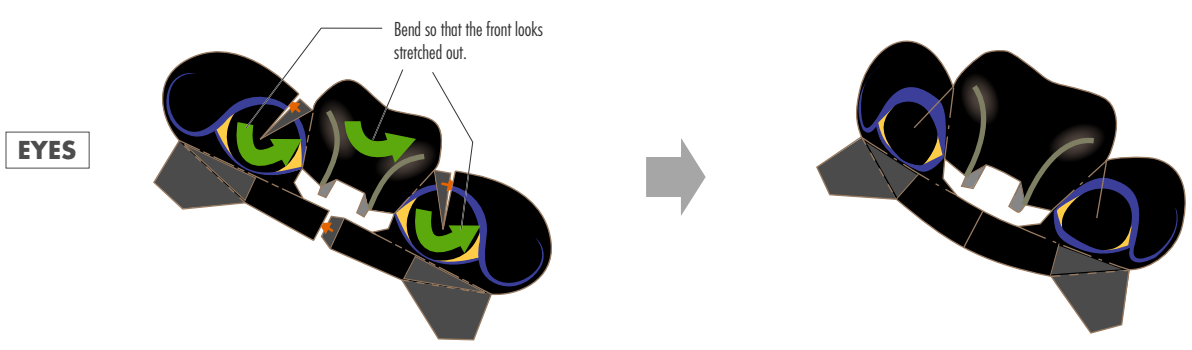
1 HEAD



2 EARS

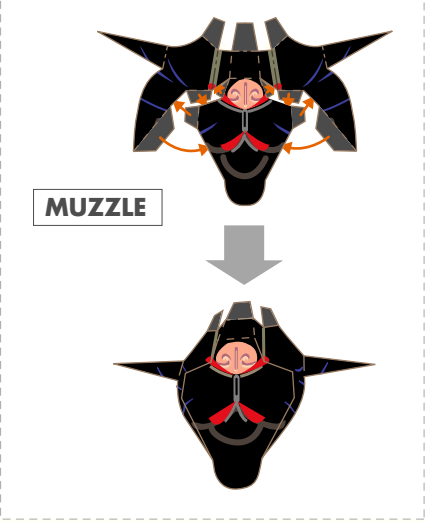


3 EYES

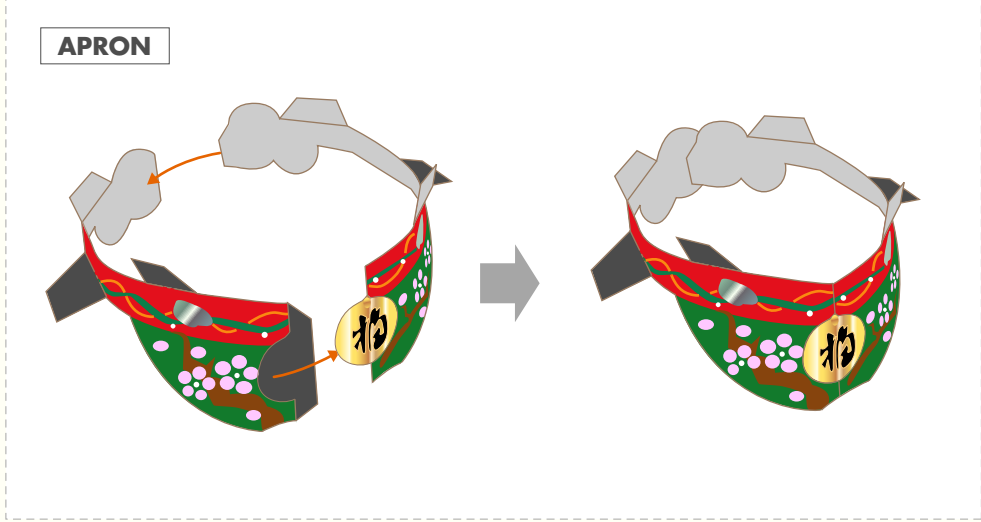


★ Build the MUZZLE, APRON, and the whole HEAD (1)

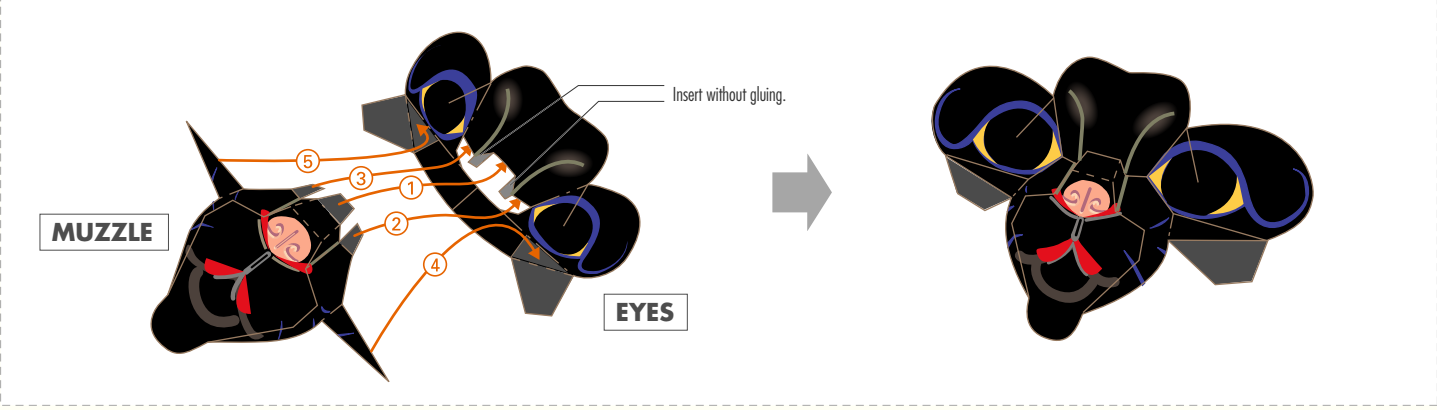
4 MUZZLE



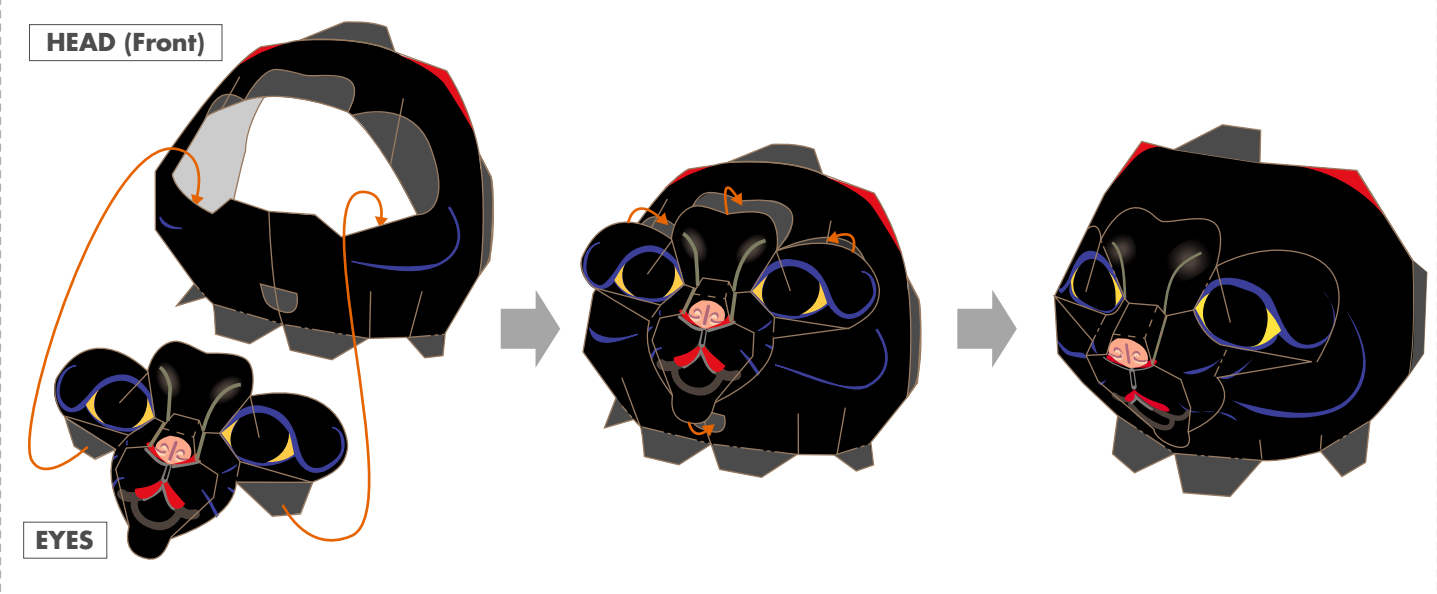
5 APRON



6 Glue the EYES, MUZZLE together

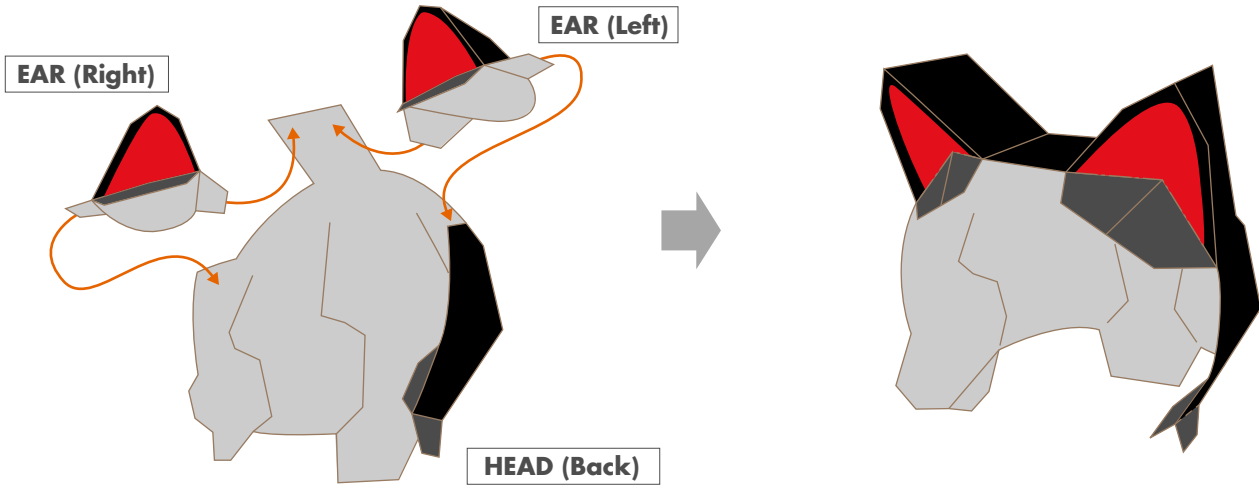


7 Glue the HEAD (Front), FACE together

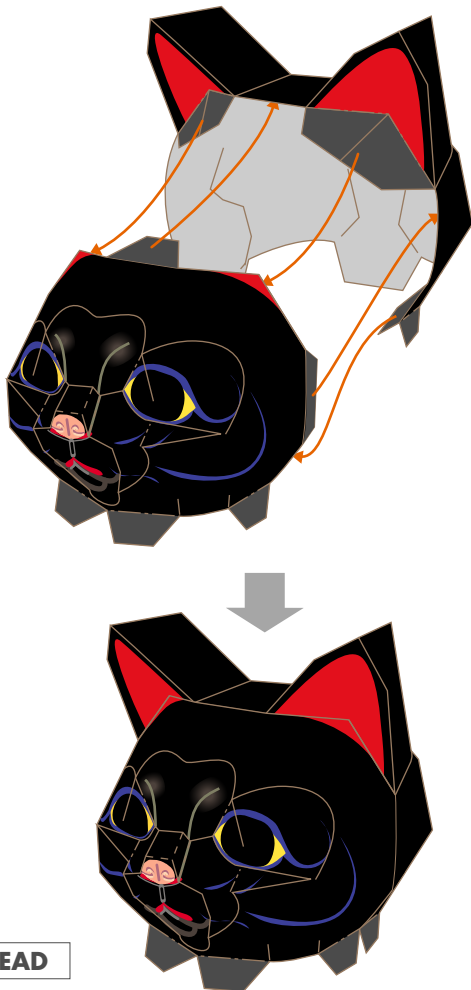


★ Build the whole HEAD (2)

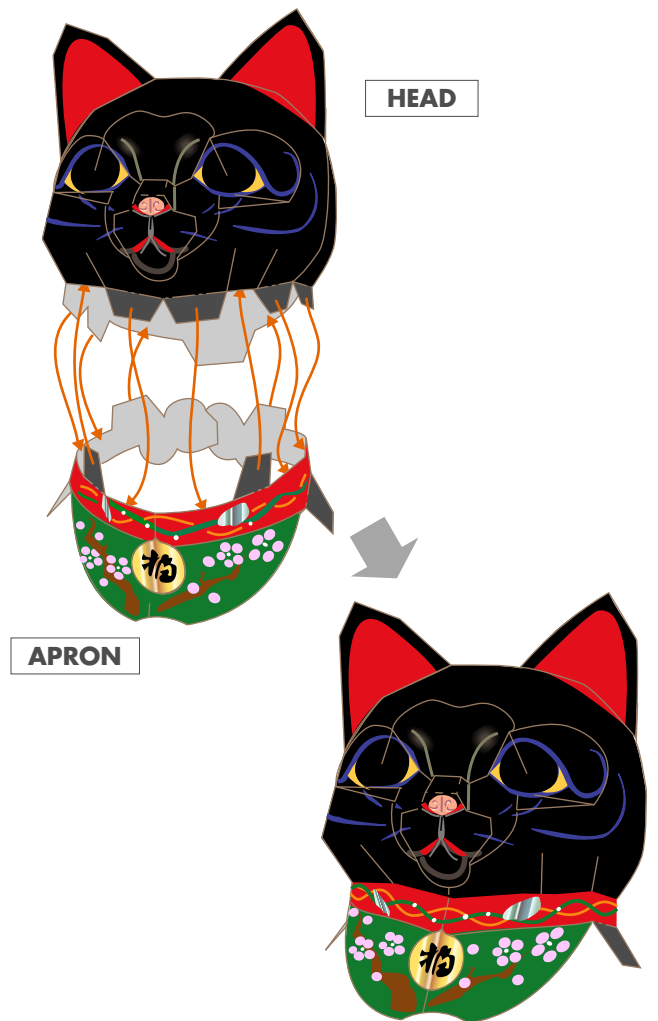
8 Glue the HEAD (Back), EARS together



9 Build the HEAD



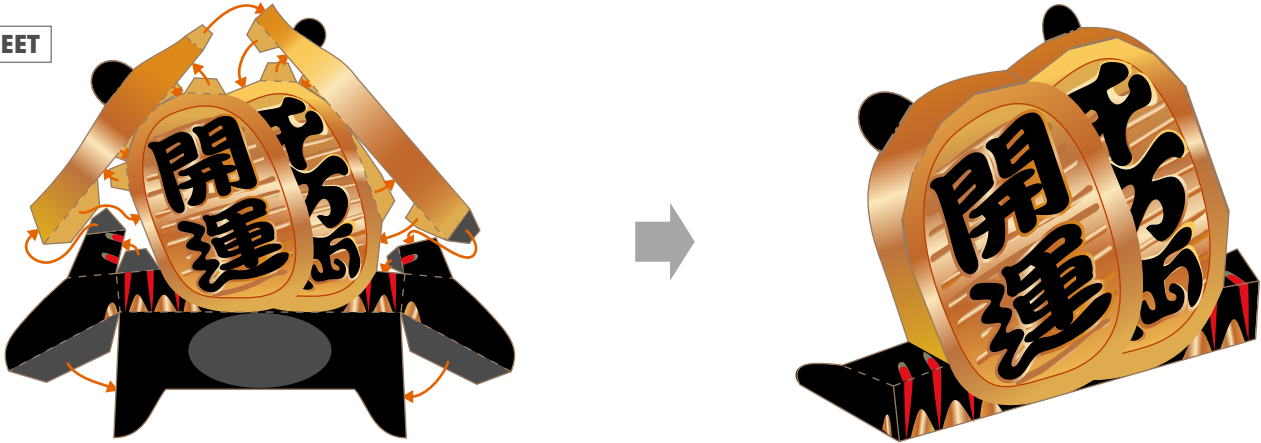
10 Glue the HEAD, APRON together



★ Build the FEET, ARM (Right) and ARM (Left)

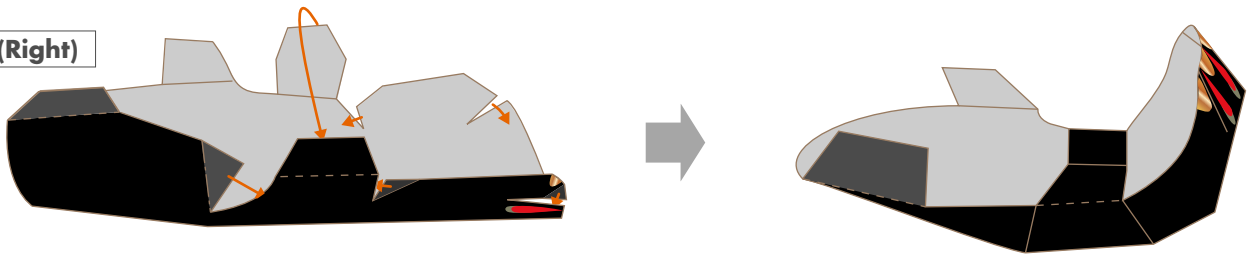
11 FEET

FEET



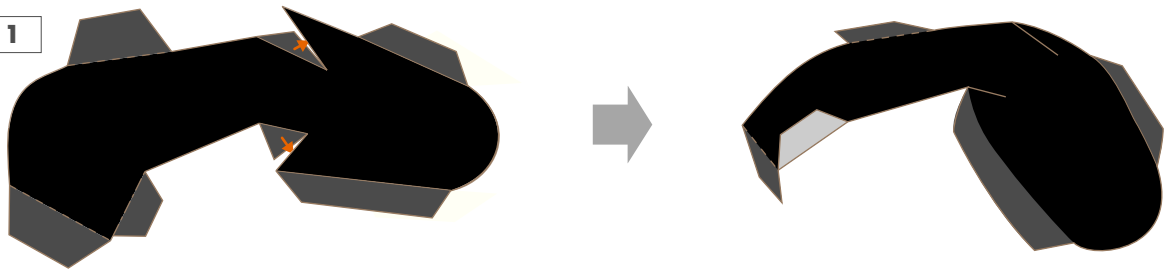
12 ARM (Right)

ARM (Right)



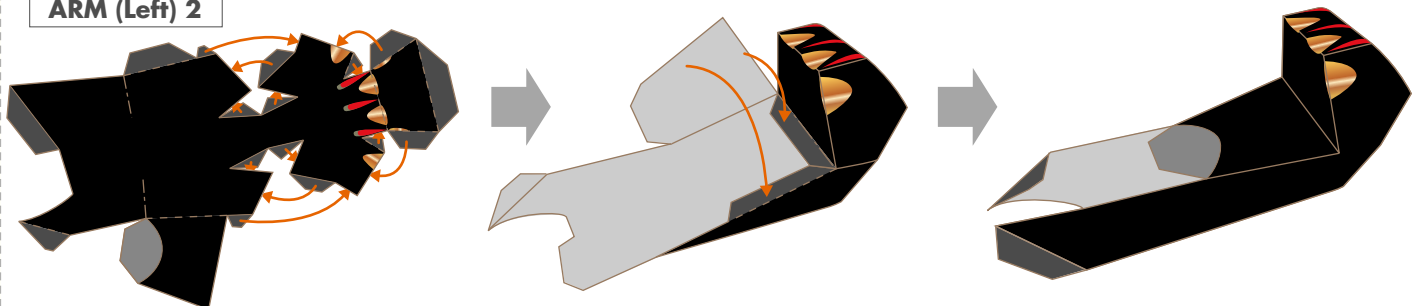
13 ARM (Left) 1

ARM (Left) 1



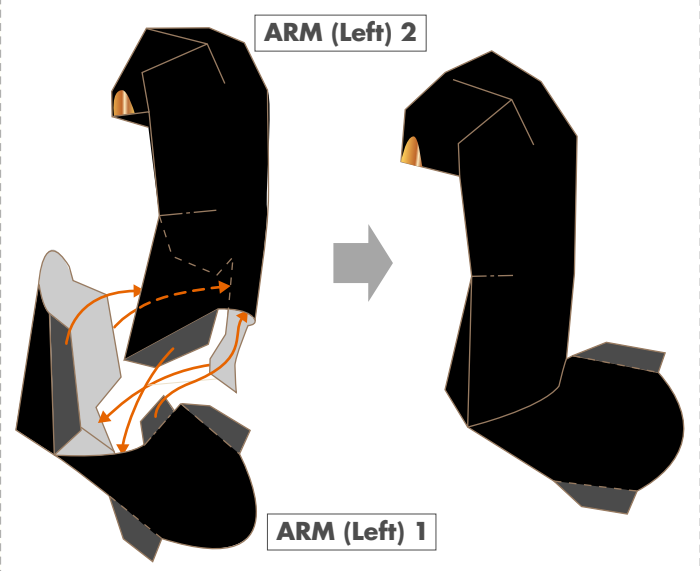
14 ARM (Left) 2

ARM (Left) 2

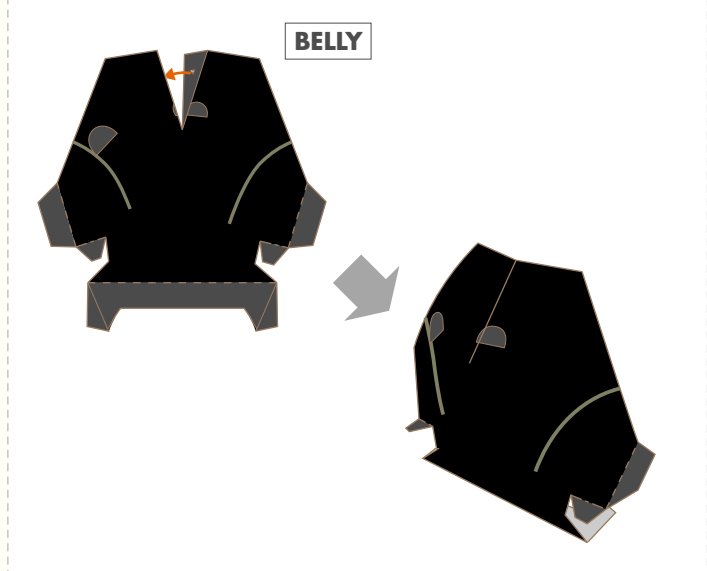


★ Build the ARM (Left), BELLY, AND SIDES

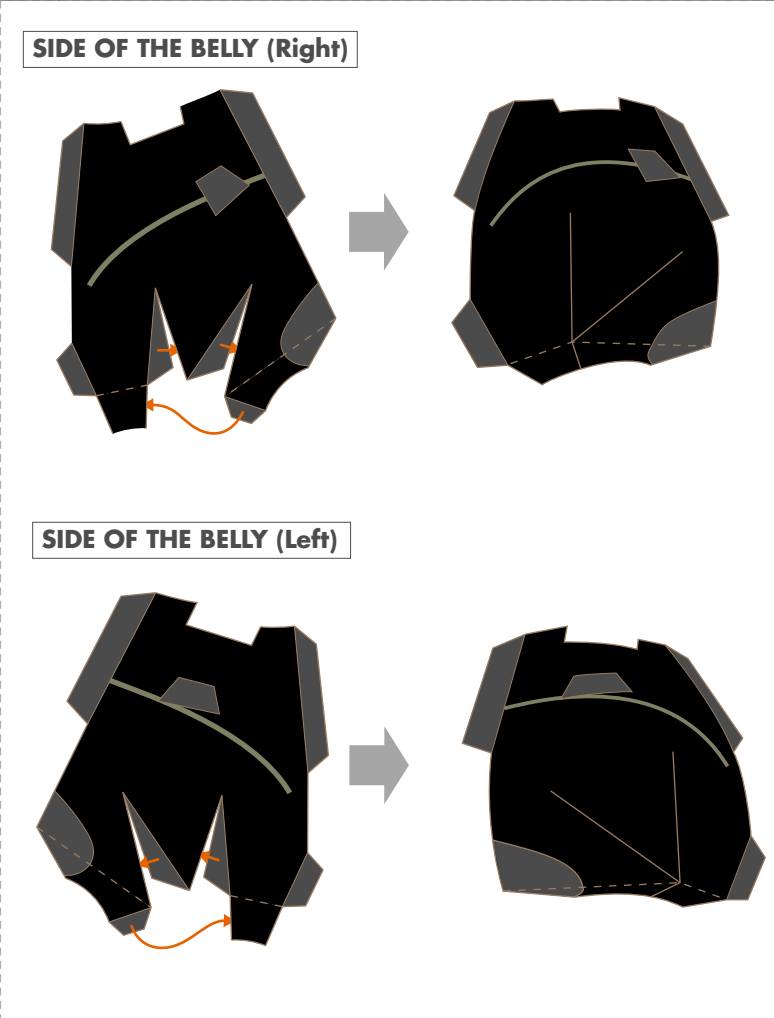
15 Glue the ARM (Left) 1, ARM (Left) 2 together



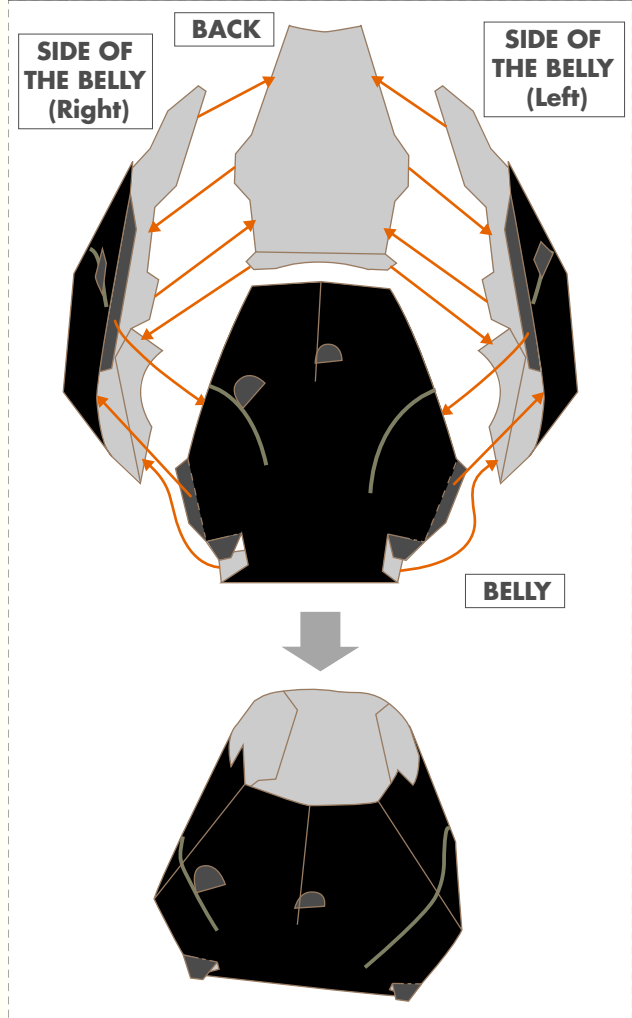
16 BELLY



17 SIDE OF THE BELLY

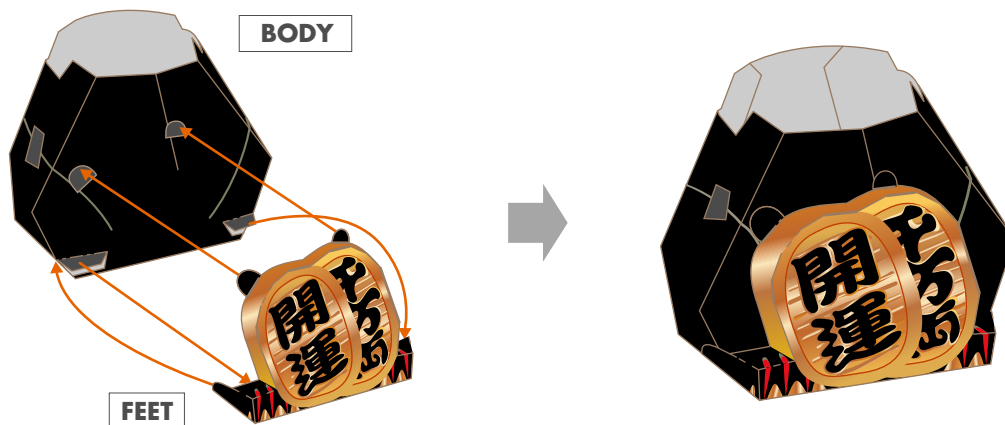


18 Glue the BELLY, SIDES, and BACK together

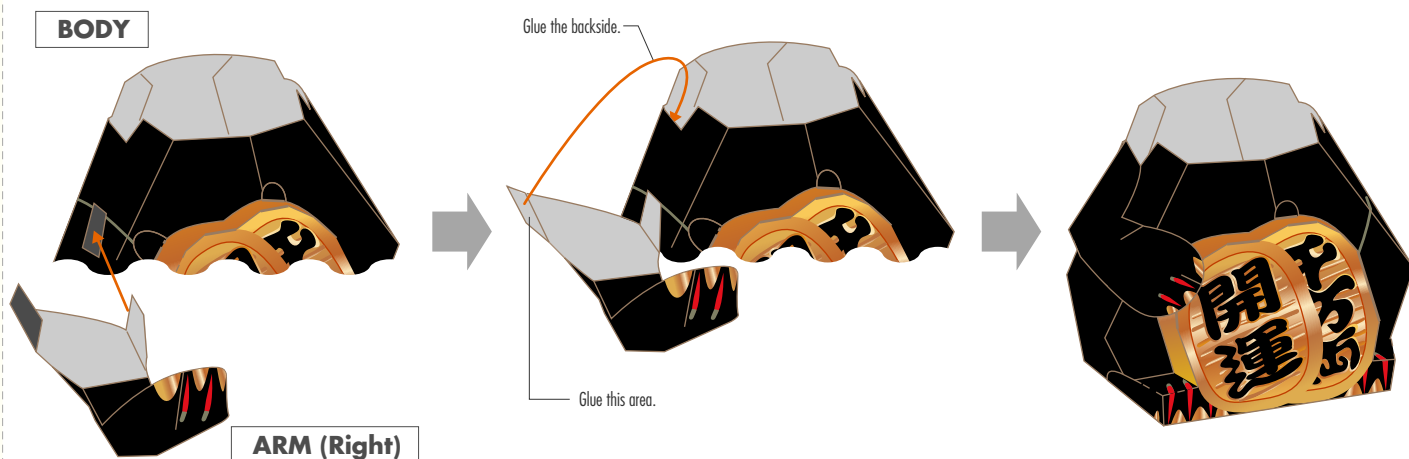


★ Put it all together (1)

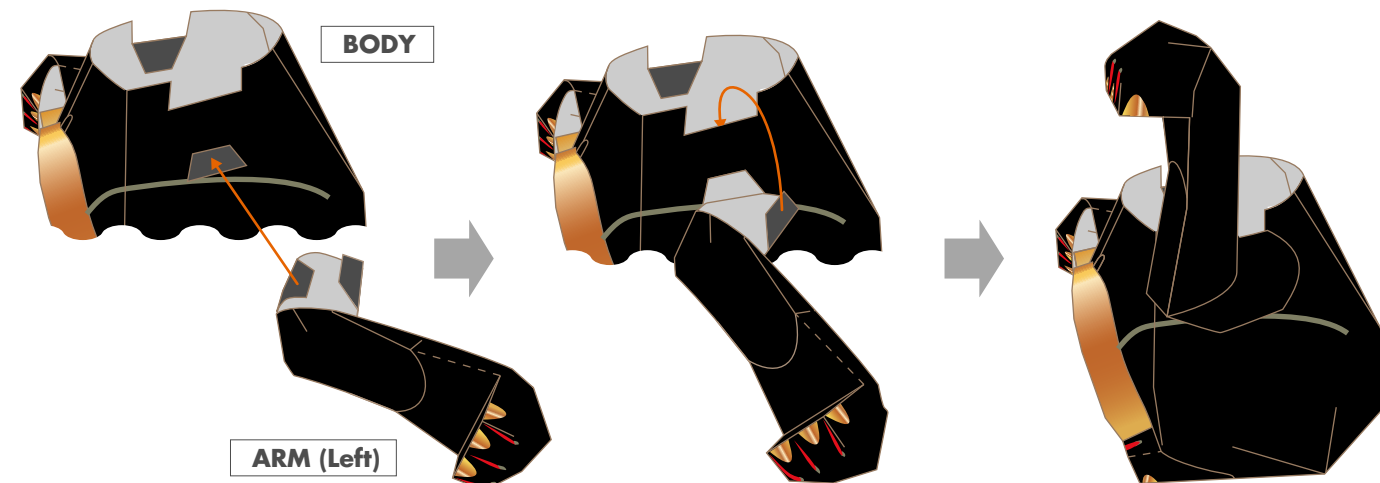
19 Glue the BODY and FEET



20 Glue the BODY and ARM (Right)



21 Glue the BODY and ARM (Left)



★ Put it all together (2) / Complete

22 Glue the BODY and HEAD

HEAD

Glue the koban (gold coin) of your choice. If you want to make a wish, write it on the plain koban and glue it on.

Glue thoroughly from the inside of the body.

KOBAN

BODY

★ Complete!

